

SCC Elections!

Students may vote for Student Coordinating Committee officers and department representatives September 28 through October 2, either in the Kresge cafeteria at lunchtime or any time in the Office for Students (Kresge G-10).

Around the School

News & Notices of the Harvard School of Public Health September 25, 1998

High-Potassium Diet May Protect Against Stroke

HSPH researchers released a study this week that indicates that diets rich in fruits, vegetables, and whole grain cereals may reduce a person's risk of stroke, especially in individuals with high blood pressure. The report is printed in the September 22 *Circulation: Journal of the American Heart Association*.

Alberto Ascherio, associate professor in the Departments of Nutrition and Epidemiology and lead author of the study, says: "The beneficial effect appears to be due to the high potassium content of these diets, but other components of fruits and vegetables may also contribute to the reduced risk of stroke."

The research used data generated by the Health Professionals Follow-Up Study, a longitudinal dietary investigation of nearly 44,000 men. The researchers found that people in the top fifth of dietary potassium intake had a 38 percent lower risk of stroke than those in the bottom fifth. The major difference between the diets of the two groups was in their consumption of fruits and vegetables. Sources of potassium include tomatoes, spinach, bananas, oranges, and other fruits and vegetables.

"While the data do not prove a causal relationship," said Ascherio, "there is strong support for a stroke-preventive effect from diets rich in potassium, magnesium, and cereal fiber."

Exams and Defenses

Shumin Zhang, doctoral student in the Departments of Nutrition and Epidemiology, will present her thesis, "Dietary Antioxidants and Folate and Breast Cancer; Dietary Fat and Protein and Non-Hodgkin's Lymphoma," on September 28 at 2:30 p.m. in SPH II-202.

Knashawn Hodge will take her oral examination for a doctoral degree in the Department of Biostatistics on September 30 at 1:30 p.m. in SPH II-426. Major field: biostatistics; minor fields: theoretical statistics and environmental health. Thomas Smith will chair the examination committee.

Mary Morrissey, doctoral student in the Department of Biostatistics, will present her thesis, "Survey Data Misclassification, Non-Ignorable Nonresponse, and Mismeasurements," on October 1 at 3:00 p.m. in SPH II-426.

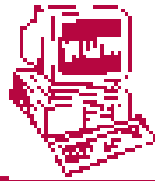


HSPH Events Calendars

The Office of Academic Communications has redesigned the online HSPH events calendar, found at www.hsph.harvard.edu/calendar/. The new design enables browsers to search for events by month, date, range of dates, event title, speaker, sponsor, series, or any combination of these parameters. The online calendar also features more information than can be printed in the *Around the School* calendar, including contact names and telephone numbers, news of receptions preceding or following the event, and website links.

The online HSPH events calendar and the printed *Around the School* calendar share listings, and the submission guidelines for both calendars are identical, with the exception that *Around the School* has a submission deadline (always found in the upper left corner of the last page of the newsletter) necessitated by its publishing schedule. Submissions to both calendars can be sent to the Office of Academic Communications, Kresge 1012; can be sent via Email to brustman@hsph.harvard.edu; or can be submitted online at www.hsph.harvard.edu/event.html.

Alberto Ascherio, associate professor, Departments of Nutrition and Epidemiology, is the lead author of a new study that indicates a protective relationship between dietary potassium intake and risk of stroke in men.



Around the School can be found on the World Wide Web at <http://www.hsph.harvard.edu/ats/>.

Calendar

The deadline for calendar submissions to Around the School is noon on Monday of the week preceding the event. Submit calendar listings to Bob Brustman, Kresge 1012, or via Email to brustman@hsph.harvard.edu.

The deadline for submitting new and continuing applications to the Human Subjects Committee for its October 15 meeting is October 1. Submit applications to Angie Foss, Kresge 505. Also, all faculty, researchers, and students who plan to use humans in their research should discuss their plans with Foss, who can be reached at 432-4513.

Monday, September 28

"Motivational Factors in Learning: How Parents Can Help Their Children Do Well in School"

Speaker: Janine Bempechat, assistant professor, Graduate School of Education, and author of the forthcoming book *Against the Odds: How At-Risk Children Exceed Expectations*

Sponsor: Harvard University Office of Work and Family
2 Brattle Square, Cambridge, 12:00-1:00 p.m.

"Applications of the Sibship Disequilibrium Test (SDT) with the NIMH Genetics Initiative Alzheimer's Disease (AD) Data"

Speaker: Marsha Wilcox, doctoral student, Department of Epidemiology
Sponsor: Department of Biostatistics, Psychiatric Epidemiology Seminar
SPH II-426, 12:30-1:30 p.m.

"Public Health and Social Learning: The Case of Silicone-Gel Breast Implants"

Speaker: Sheila Jasanoff, professor, Department of Population and International Health
Sponsor: Department of Population and International Health, Population and Reproductive Health Seminar
SPH I-1112, 4:00-5:30 p.m.

Tuesday, September 29

"Homeostasis in the Pleural Space: Preliminary Thoughts for Future Research"

Speaker: Stephen Loring, associate professor, Department of Environmental Health

Sponsor: Department of Environmental Health, Physiology Program
Kresge 502, 9:30-10:30 a.m.

"Letting Infants Cry Alone: Does America Know Best?"

Speakers: Michael Commons, lecturer and research associate in psychiatry, HMS; and Patrice Miller, research associate in psychiatry, HMS

Sponsor: Harvard University Office of Work and Family
2 Brattle Square, Cambridge, 12:00-1:00 p.m.

"Development of Next Generation HEDIS Measures"

Speaker: Thomas Lee, associate professor, Department of Epidemiology
Sponsors: Center for Quality of Care Research and Education, Harvard Risk Management Foundation
Kresge G-2, 12:30-1:35 p.m.

"Conversations on Health Care Management: Managing Medical Errors"

Speaker: Lucien Leape, adjunct professor, Department of Health Policy and Management
Sponsor: Malcolm Wiener Center for Social Policy
Fainsod Room, KSG, 79 JFK Street, Cambridge, 4:00-5:00 p.m.

Thursday, October 1

"Income Inequality and Health in the United States: Empirical Evidence and Conceptual Considerations"

Speaker: John Lynch, Department of Epidemiology, University of Michigan School of Public Health
Sponsor: Harvard Center for Population and Development Studies
9 Bow Street, Cambridge, 4:30-6:00 p.m.

The Practice of AIDS Medicine

The Harvard AIDS Institute and the Arthur Ashe Program in AIDS Care are cosponsoring a series of presentations and discussions on the current state of AIDS medicine. For more information, call 432-4119.

Tuesday, September 29:

Speakers: Richard Marlink, Harvard AIDS Institute; Spyros Kalams, Massachusetts General Hospital; Paul Sax, Brigham and Women's Hospital; Martin Hirsch, Department of Immunology and Infectious Diseases
FXB G-12, 3:30-7:00 p.m.

Thursday, October 1

Speakers: From Beth Israel Deaconess Medical Center: Helen Jacoby and John Doweiko; Jamie Maguire, Department of Immunology and Infectious Diseases; Kenneth McIntosh, Children's Hospital
FXB G-13, 3:30-7:00 p.m.

Friday, October 2

Speakers: From Massachusetts General Hospital: Nesli Basgoz, Stephen Grinspoon, and David Scadden; Lisa Hirschhorn, Dimock Community Health Center
FXB G-12 3:10-6:30 p.m.

Around the School is published by the Office of Academic Communications Harvard School of Public Health 677 Huntington Ave., 1012 Boston, Massachusetts 02115 617-432-3952 brustman@hsph.harvard.edu
Editor: Bob Brustman
Printing: The Print House
Photo Credit: Kent Dayton
Printed on recycled, recyclable paper using soy-based ink

