



Winter Session in Cyprus, January 4 - 22, 2010

We are pleased to announce that CII/HCP will offer one Winter Session course for January 2010.

We seek to recruit up to 16 HSPH students interested in gaining an international public health experience. Students selected for this program will study for three weeks at our institute in Limassol, Cyprus. The Winter Session will offer a rewarding academic and cultural experience for both faculty and students. This scholarship will cover round-trip air travel from Boston to Cyprus, shared hotel accommodation, and a modest meals stipend. Participating HSPH students will be expected to pay all related registration, tuition, course and student fees.

Note: English is the official language of CII.

EH516 Environmental Genetics—January 4—22, 2010

Dr. Adrienne Ettinger

2.5 credits

No prerequisites

Lectures, case studies. 3 hours per day

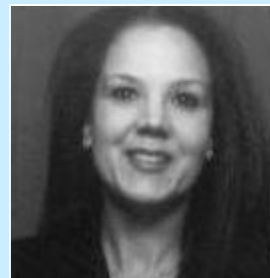
Course held at the Cyprus International Institute in Limassol, Cyprus

The interaction between genes and environmental and/or occupational exposures plays a major role in disease development. This course will focus on the underlying science of gene-exposure interactions and will use examples of such interactions and their health consequences. Gene-environment interactions will be discussed using an epidemiologic approach to address how genetic polymorphisms can influence susceptibility to disease. This course will enable students to understand and apply findings of genetic association studies and will consist of detailed evaluation of specific examples of gene-exposure interactions and their health consequences, as well as their social implications.

Course note: No auditors, HSPH degree candidates only

**For more information, contact Alice Smythe at (617) 384-8831
or by email at: asmythe@hsph.harvard.edu**

Adrienne Ettinger, Sc.D., M.P.H.



Research Scientist/Instructor in the Exposure, Epidemiology and Risk Program at the Harvard School of Public Health and Adjunct Assistant Professor at the University of Michigan School of Public Health. Dr. Ettinger's research focuses on the effects of environmental exposures on reproductive, perinatal, and children's health. The objective of her work is to understand how common genetic variants and dietary nutrients may modify susceptibility to environmental exposures in the maternal-fetal unit and, ultimately, impact toxicant-induced pregnancy and developmental outcomes. Prior to returning to HSPH, Dr. Ettinger held a faculty position at John Hopkins Bloomberg School of Public Health and was an Epidemiologist at the U.S. Centers for Disease Control and Prevention (CDC).

Protecting the Environment and Safeguarding Health

<http://www.hsph.harvard.edu/cyprus>