

# DEPARTMENT NOTES

## ENVIRONMENTAL HEALTH

Updates,  
Awards, Grants,  
& Accolades



Promotions and  
Appointments



Popular Press:  
Translating Our  
Science



In Other News



Dear Environmental Health,

Welcome Back!

As our academic year begins, Francine and I extend a word of welcome to you on behalf of everyone at the School. We strive every day to make the Department of Environmental Health a great place to work and learn. We hope that everyone had a rejuvenating summer break. As you get settled back into campus, please catch up on the activities that occurred over the summer in the Department.

Sincerely,

Russ Hauser, Chair  
Francine Laden, Associate Chair

### INCOMING STUDENTS FOR FALL 2019

#### Doctor of Philosophy in Population Health Sciences

William Borchert  
Jordana Leader  
Unnati Mehta  
Caroline Park  
Xinye Qiu  
Hantao Wang  
Chihfu Wei  
Grete Wilt  
Zijing (Jane) Zhu

#### Doctor of Philosophy in Division of Biological Sciences

Jake Jensen  
Hannah Smith  
Gabrielle Webb

#### Master of Science 80 Credits

Mahaa Ahmed  
Sanjana Bhaskar  
Marissa Chan  
Kelly Chen  
Harrison Grogan  
Tingfan Jin  
Dijuan Liang  
Jahred Liddie  
Jiachen (Jason) Liu  
Rongqi Liu  
Wenxin Lu  
Tabitha Lumour-Mensah  
Samantha Tracy

#### 2nd Year Medical Residents

Robert Filler  
Nathan Jones  
Hussam Kurdi  
Michael Parenteau  
Christopher Scheibler

#### Master of Public Health 65 Credits

Kritika Anand  
Alexandra Azevedo  
James Healy  
Helena Hengelbrok  
Duan Pei Hung  
Anne Lin  
Kyle Miller  
Jessica Schiff

#### Master of Public Health 45 Credits

Richard Abitria  
Glen Cheng  
Gabriel Gaviola  
Stephen Kasteler  
Robert Filler

## Updates, Awards, Grants, and Accolades



### **NIEHS Environmental Health Sciences Core Centers Spotlight**

Featured: TAMARRA JAMES-TODD, *Mark and Catherine Winkler Assistant Professor of Environmental Reproductive and Perinatal Epidemiology at Harvard Chan*. Tamarra, who was the center's new investigator and now leads the Center Organics Core, shared her research on phthalate and paraben exposures in pregnant women and risk of gestational diabetes at the 2018 NIEHS Core Centers Annual Meeting. The Photo on the left shows NIEHS and National Toxicology Program Director, Linda Birnbaum, and Harvard Chan - NIEHS Center's former Director, Douglas Dockery, presenting Tamarra with a certificate for her poster presentation.

### **Environmental Mutagenesis and Genomics Society (EMGS) 2019 Young Scientist Award Winner**

Winner: ZACHARY NAGEL, *Assistant Professor of Radiation Biology at Harvard Chan*

The award recognizes talented young investigators and allows them to showcase their work to the EMGS community and to the public. Zachary will give the plenary lecture presentation at the EMGS Annual Meeting on Sunday, September 22nd from 3:30pm-4:30pm in Washington, D.C.

### **2019 Summer ACE Award Nominees in EH**

Nominees: BARBARA ZUCKERMAN, *EH Assistant Director of Faculty and Academic Affairs*

AMALIA ALMADA, *Senior Program Manager*

The ACE Award acknowledges Harvard Chan staff who have made extraordinary efforts in the workplace. Nominees have exemplified major accomplishments and shown commitment to the School's mission. We are proud of our two EH staff members who have been nominated for the Summer Award.

### **The Gordon Research Seminars (GRS) Co-Chair**

Elected Co-Chair: CHIMWEMWE MWASE, *PhD Student in the Biological Sciences in Public Health Program*

Chimwemwe was elected to be the co-chair for the next GRS meeting held in 2021. She was the only graduate student among four other nominees.

## DISSERTATION



Congratulations to JIE YIN on his successful doctoral defense of his dissertation titled, "Bringing Nature Indoor with Virtual Reality: Human Responses to Biophilic Design in Buildings"

## HARVARD CHAN ANNIVERSARIES

RICK ROGERS - 30 years of service

JOEL SCHWARTZ, CARLA SILVA & JOY LAWRENCE - 25 years of service

EILEEN MCNEELY & TRACY SACHS - 20 years of service

MELISSA CURRAN - 15 years of service

MI-SUN LEE, SAMUEL MEYERS & ELISA GHELFI - 10 years of service

ANNY MAZA - 5 years of service

## NEW GRANTS IN THE DEPARTMENT

Principal Investigator	Award Title	Sponsor
Gary Adamkiewicz	Validating City Scanner: a low-cost air quality platform for cities	NIEHS Pilot Project
Douglas Brownfield	Reverse Engineering the Alveolus: from cellular to microenvironmental specification during development	NIH/NHLBI
Jeff Fredberg & Jin-Ah Park	Physics of bronchial epithelial unjamming	NIH/NHLBI
Petros Koutrakis	Source-differentiated air quality system to safeguard the respiratory health of US military personnel deployed in Southwest Asia, Djibouti, and Afghanistan	USC/NASA
Bernardo Lemos	Novel markers of exposure and pathways of response to Chromium-Supplement	NIH/NIEHS
Shruthi Mahalingaiah & Tamarra James-Todd	Hair product use and risk of pre-term birth	March of Dimes Birth Defects Foundation
Gina McCarthy	Air quality and health benefits modeling for the transportation and climate initiative	Barr Foundation
Drew Michanowicz	Contaminants in the kitchen	Barr Foundation
Zachary Nagel	Genomic integrity mechanisms underlying disparities in age-related disease risk	Dean's Fund of Scientific Advancement
Chan Young Park	Small molecular compounds for glaucoma therapy	BrightFocus Foundation
Jin-Ah Park	Apoptosis priming in primary human airway epithelial cells in response to environmental exposures	NIEHS Pilot Project
Kristopher Sarosiek & Johan Spetz	Dynamic regulation of apoptosis as a driver of cardiovascular disease caused by environmental lead exposure	NIEHS Pilot Project
Sneh Toprani & Irina Mordukovich	Assessing DNA damage and repair capacity in airline flight crew	NIEHS Pilot Project

## Promotions and Appointments

### NEW APPOINTMENTS



Please welcome SHRUTHI MAHALINGAIAH, Assistant Professor of Environmental Reproductive and Women's Health. She holds a BA from Middlebury College, an MD from Harvard Medical School, and an MS in Epidemiology from Boston University School of Public Health. Shruthi previously completed an OB/GYN residency at the Massachusetts General/Brigham and Women's Hospital combined program. Prior to joining us, she was an Assistant Professor in the Departments of Epidemiology, Physiology and Biophysics at Boston University.



Please welcome DOUGLAS G. BROWNFIELD on his appointment as The Mark and Catherine Winkler Assistant Professor of Cell and Developmental Biology. He officially joined the Faculty of the Department of Environmental Health on July 1, 2019. He holds a BS in Biomedical Engineering from Tulane University and a PhD in Bioengineering from University of California Berkeley. Doug has just completed a postdoctoral fellowship in the Department of Biochemistry at Stanford University.

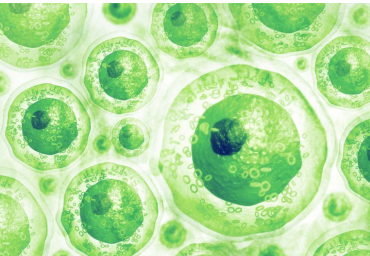
## UPCOMING EVENTS

**EH WELCOME BACK EVENT on September 12th from 3:30pm-5:00pm on the Harvard Medical School Lawn. The Rain date is September 24th.**

2019 PLANETARY HEALTH ANNUAL MEETING on September 4-6th at Sanford University in California. This global conference is a seminal meeting of leading researchers and policymakers in planetary health. Participants showcase their groundbreaking work, gain insight into strategies to advance planetary health, and inspire and equip the next generation of scholar and practitioners to take on planetary health challenges.

RISK ASSESSMENT, ECONOMIC EVALUATION, AND DECISIONS WORKSHOP honoring JOHN EVANS, who has been a core member of the Harvard Center for Risk Analysis for almost 30 years. The event will take place on September 26-27th at the Harvard University Center for the Environment and will feature papers drafted by leading experts.

## Popular Press: Translating Our Science



### **Genome-Wide CRISPR Screen Identifies Suppressors of Endoplasmic Reticulum Stress-Induced Apoptosis**

A study lead by QUAN LU was published in Proceedings of the National Academy of Sciences (PNAS) in July and was featured in the Harvard Gazette this summer. The purpose of this study was to focus not on the process of apoptosis but to better understand how a cell determines its breaking point. The answer to this is with the L3MBT2 gene which they examined using the tool CRISPR.