

Epicenter

Department of Epidemiology Newsletter

Volume 2 Issue 3, June 2016



HARVARD
T.H. CHAN

SCHOOL OF PUBLIC HEALTH

Graduation

Congratulations to the 2016 Graduates!

The Department of Epidemiology would like to extend a warm and sincere congratulations to the graduates of 2016. This year we graduated 17 Doctors of Sciences in Epidemiology, 1 Doctor of Science in Epidemiology and Environmental Health, 4 Doctors of Science in Epidemiology and Nutrition. We also graduated 41 Masters of Science in Epidemiology. We wish all of our graduates the best of luck as they continue on their Academic and Educational endeavors.

Doctors of Science– Epidemiology

- ◆ Ellen Christina Caniglia, Dissertation, “Dynamic Monitoring Strategies for HIV-Positive Individuals”
- ◆ Maxine May Chen, Dissertation, “Genetics and Genomics of Endometrial Cancer”
- ◆ Kirsten Sandstrom Dorans, Dissertation, “Ambient Air Pollution and Atherosclerosis: The Framingham Heart Study”
- ◆ Leslie Virginia Farland, Dissertation, “A Prospective Study of Endometriosis and Breast Health: Findings from the Nurses’ Health Study II”
- ◆ Kaitlin Ann Hagan, Dissertation, “Dietary and Hormonal Factors in Relation to Physical Function”
- ◆ Katherine Carlson Hughes, Dissertation, “Dietary and Genetic Risk Factors for Parkinson’s Disease”
- ◆ Anders Huitfeldt, Dissertation, “Emulation of Target Trials to Study the Effectiveness and Safety of Medical Interventions”
- ◆ Melanie Lynn Kornides, Dissertation, “Longitudinal, Time-Varying Behavioral Exposures and Changes in Childhood Adiposity”
- ◆ Wenyan Li, Dissertation, “Ambient Air Pollution, Adiposity, and Hepatic Steatosis: The Framingham Heart Study”
- ◆ Xin Li, Dissertation, “Genetics, Caffeine Consumption, Height and Non-Melanoma Skin Cancer”
- ◆ Sheng-Hsuan Lin, Dissertation, “Causal Mediation Analysis With Time-Varying and Multiple Mediators”
- ◆ Patrick Kevin Mitchell, Dissertation, “Pneumococcal Population Dynamics in the Conjugate Vaccine Era”
- ◆ Eleanor Jane Murray, Dissertation, “Agent-Based Models for Causal Inference”
- ◆ Catherine Elizabeth Oldenburg, Dissertation, “HIV Treatment and Prevention in Kwa-Zulu-Natal, South Africa: Individual, Couple, and Household Effects of Antiretroviral Therapy”
- ◆ Ryan Murphy Seals, Dissertation, “Risk Factors for Amyotrophic Lateral Sclerosis”
- ◆ Amy Lee Shafir, Dissertation, “Reproductive and Hormonal Factors in Relation to Ovarian Cancer Risk and Survival”
- ◆ Lani Rapp Wegrzyn, Dissertation, “Circadian Disruption, Mammographic Density and Risk of Breast Cancer”

Doctors of Science– Epidemiology and Environmental Health

- ◆ Mohammad M. S. Alseaidan, Dissertation, “Maternal, Behavioral, and Environmental Risk Factors for Gestational Diabetes and Preterm Birth Among Pregnant Women”

Doctors of Science– Epidemiology and Nutrition

- ◆ Ambika Satija, Dissertation, “Plant-Based Diets and Risk of Type 2 Diabetes and Coronary Heart Disease”

Doctors of Sciences– Nutrition and Epidemiology

- ◆ Ming Ding, Dissertation, “The Associations Between Consumption of Coffee and Soy Food With Health Outcomes”
- ◆ Kathryn Cauley Fitzgerald, Dissertation, “Vitamin D and Neurodegenerative Disease With Selected Topics Related to Correlated and Missing Outcome Data”
- ◆ Dong Wang, Dissertation, “Health Dietary Patterns, Plasma Lipid Metabolites, Cardiovascular Health and Mortality”

Masters of Science– Epidemiology

- ◆ Xeno Acharya
- ◆ Andrew Steven Allegretti
- ◆ Amanda Marie Anderson
- ◆ Inhye Baik
- ◆ Lauren Elizabeth Barber
- ◆ Rebecca Kay Butler
- ◆ Krystal Victoria Cantos
- ◆ Erin O’Neill Comerford
- ◆ Barbra Dickerman
- ◆ Mary Kathryn Downer
- ◆ Olabimpe Ruth Eseyin
- ◆ Danielle D. Feng
- ◆ Mariko Ann Geiger
- ◆ Maria Haller
- ◆ Chunzi Jenny Jin
- ◆ Blake Elliot Johnson
- ◆ Alaina Kathryn Kipps
- ◆ Genevieve Kathleen Lennox
- ◆ Yu Li
- ◆ Brian Min-Hann Lin
- ◆ Sarah Anne Lucht
- ◆ Calvin Cheuk Hang– Lung
- ◆ Sarah Faith McGough
- ◆ Samantha Ann Molsberry
- ◆ Takuhiro Moromizato
- ◆ Mosepele Mosepele
- ◆ Vitor Moutinho Da Conceicao Junior
- ◆ Heather Elisa Olson
- ◆ Yenadounou Jean-Marc Ouattara
- ◆ Sharon Jelena Phillips
- ◆ Joel A. Salinas
- ◆ Eric Alexander Secemsky
- ◆ Alessandra Storino Gonzalez
- ◆ Tianyu Tang
- ◆ Paaladinesh Thavendiranathan
- ◆ Phoebe Minh Tran
- ◆ Gaurav Verma
- ◆ Pooja Geetha Vinayak
- ◆ Zhi Jian Wang
- ◆ Zhihui Wang
- ◆ Rui Yang

Commencement Awards

Department of Epidemiology



Dr. Stacey Missmer
Associate Professor of Epidemiology
Mentoring Award



Dr. Murray Mittleman
Professor of Epidemiology
Teaching Citations



Eric DiGiovanni
Academic Program Coordinator
Staff Recognition Award



Kaitlin Hagan
Doctor of Science Candidate
Teaching Assistant Awards



Corey Peak
Doctor of Science Candidate
Uwe Brinkmann Memorial Travel Award

Sarah K. Wood Award for Outstanding Staff Performance



David Havelick
Program Manager
Sarah K. Wood Award for Outstanding
Staff Performance

The Sarah K. Wood Award for Outstanding Staff Performance recognizes a staff member who demonstrates the qualities of dedication, competence, positive attitude, initiative, and ability to mentor, encourage, and inspire others, in addition to a demonstrated commitment to the School and its mission.

This award was established by friends and admirers of Sarah K. Wood in tribute to her many years of exceptional service to Harvard University and the Harvard T.H. Chan School of Public Health. Sarah began her tenure at the School in 1980 as assistant to Dr. Harvey Fineberg. When he was named dean of the School in 1984, she became his senior administrative assistant, moving in 1997 to assist him in his role as University provost. Sarah later returned to the School, serving as assistant director of volunteer programs and executive education in the Office for External Relations from 2003 through 2012.



2015-2016 Teaching Assistant Award Recipients



Kaitlin Hagan



Lauren Tanz



Dale Barnhart



Corey Peak



Erin Onstad



Eleanor Murray



Alumni Spotlight



Leonardo Tondo, M.D. M.Sc.

Professor of Psychiatry,
McLean Hospital— Harvard Medical
School
Director, Mood Disorder Outpatient;
Clinic Centro Lucio Bini, Italy

Professor of Psychiatry; Lecturer in Psychiatry at the McLean Hospital-Harvard Medical School; Director Mood Disorder Outpatient Clinic Centro Lucio Bini, Cagliari, Italy. Dr. Tondo received his medical degree at the University of Rome, his Specialty in Psychiatry and Psychotherapy at the same university, and completed the program of Master of Science in Epidemiology and Statistics at the Harvard School of Public Health.

Dr. Tondo has studied the course and treatment of bipolar (manic-depressive) and unipolar major depressive disorders since 1975. He is a leading expert on long-term treatment of mood disorders and on medical approaches to suicide prevention. In 1977, he established a specialized, research-based, mood-disorders clinic, the Lucio Bini Mood Disorder Center, a branch of the same outpatient clinic in Rome, where he has systematically collected clinical research data (now-computerized) involving more than 6,000 patients. It is the largest private psychiatric institution of its kind in the region and one of the largest in Europe. Dr. Tondo has taught university courses in clinical psychiatry, general and clinical psychology, and psychological testing for more than 20 years. He retired from the Italian university in 2010 disappointed by the local academic system.

He started research on mood disorders following the late Dr. Athanasios Koukopoulos, a leading expert on the field, who has been his mentor for more than 20 years. Dr. Tondo has focused particularly on the course and treatment of bipolar disorders, based on prolonged, systematic experience with 800 such patients. His notable contributions include: [a] abrupt or rapid discontinuation of mood-stabilizing or antidepressant medicines, including among pregnant women, was strongly associated with markedly increased and earlier risk of illness-recurrence, rehospitalization, or suicidal behavior, whereas gradual dose-reduction decreased, and not merely delayed, adverse outcomes; [b] quantification of beneficial and adverse effects of long-term treatment with the best-established mood-stabilizing agent, lithium carbonate; these include marked reductions of all phases of bipolar disorder, and markedly reduced risk suicides and attempts in bipolar as well as unipolar-depressed patients. More recently he led the most comprehensive review and quantitative analysis of risks of clinical mood-elevation (“switching”) associated with antidepressant treatment among patients with various mood disorders, and submitted research grant applications to continue this research under better-controlled, prospective conditions in his own Center. He recently assessed the role of onset-age as a critical factor in differentiating types I and II bipolar disorders from unipolar depressed patients, including differential assessment of illnesses starting with depression before bipolarity is manifest; this work included both his Center and other patients provided by a growing series of international collaborations. These and other studies have been strongly encouraged by Harvard Medical School collaborators including Professor Ross J. Baldessarini, founding director of the International Consortium for Bipolar Disorder Research at McLean Hospital, leading to many publications in outstanding international research journals. In summary, Dr. Tondo's major contributions include establishment of a specialized mood-disorder clinical research center in Europe, with one of the largest systematically evaluated, treated, and followed cohorts of mood disorder patients ever collected. His studies include clarification of onset, course, and treatment responses in major mood disorders, including long-term prophylaxis with mood-stabilizing treatments in bipolar disorders as well as adverse effects. His contributions have been recognized by international awards for his research on the treatment of bipolar disorder and in the medical prevention of suicide.

In addition, he is a columnist for a leading scientific Italian magazine, *Mente e Cervello* (Mind and Brain) where he publishes monthly letter replies to a general audience on psychiatric or psychological issues (list available). He is also a certified publicist for national (Italian) newspapers on psychological and psychiatric issues (list available).

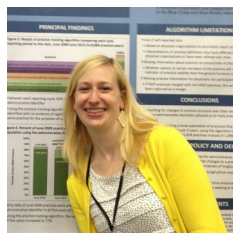
Dr. Tondo received the Nola-Maddox Falcone Prize, from the NARSAD, for *Outstanding Achievement in the Research of Affective Disorder* (2003), and the Suicide Prevention Award from the American Foundation for Suicide Prevention, for *Research on lithium treatment and prevention of suicide risk* (2004).

Department Recognition

- **Dr. John Jackson** and **Dr. Sonja Swanson** are the 2016 winners of the Kenneth Rothman Epidemiology Prize. This award of \$5000 is funded from a private endowment and is given annually for the best paper published in the journal in the preceding year. The winning paper, titled "Toward a Clearer Portrayal of Confounding Bias in Instrumental Variable Applications", appeared in the July 2015 issue of Epidemiology.
- A study by researchers at the Harvard T.H. Chan School of Public Health shows that the ill effect dissipates within hours, yielding to benefits for moderate drinking. The work, led by instructor in epidemiology **Elizabeth Mostofsky**, analyzed the findings of a range of studies on alcohol and health conducted between 1966 and 2015.
- **Dr. Alkes Price** was awarded the McLennan Dean's Challenge Grant. The \$50,000 award by the McLennan Family Fund was created to support strategic investments that foster rapid innovation and advance a shared vision for a stronger, more dynamic, and more globally-engaged school.
- **Dr. Eric Rimm** and **Dr. Qi Sun** received a 4 year \$3.1 M RO1 to study diet, the microbiome and coronary heart disease in the Health Professionals Follow-up Study and in the Nurses' Health Study II.



- **Amanda Markovitz**, a Doctoral Student in the Department of Epidemiology, is the Recipient of the 2015-2016 Barry R. and Irene Tilenius Bloom Fellowship. The fund provides critical financial aid— one of Bloom's priorities as dean— that can transform a student's vision of public health career into a reality. Recipients of this award are selected on academic merit, leadership potential, and commitment to improving public health fields and areas of the world in greatest need.
- **Dr. Marc Lipsitch** will give the Robert Austrian Lecture at the 10th International Symposium on Pneumococci and Pneumococcal Disease in Glasgow.



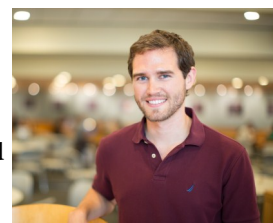
- The 3rd annual International Molecular Pathological Epidemiology (MPE) Meeting took place in Boston on May 12th and 13th, 2016. This meeting is chaired by **Dr. Shuji Ogino**. The meeting was a huge success with attendance topping 150 attendees from 17 countries and 400 viewers livestreaming worldwide. The 4th International MPE meeting will be held Spring 2018.



- **Dr. John Jackson**, a current Yerby Postdoctoral Fellow, will be joining the faculty at the John Hopkins Bloomberg School of Public Health as an Assistant Professor with the Pharmacoepidemiology Group within the General Epidemiology and Methods Track. Dr. Jackson will continue working on diagnostics for causal inference and also methods for addressing disparities in treatment and outcomes, particularly in the realm of mental health.



- Doctoral Candidate **Corey Peak**, was the 2016 recipient of the Uwe Brinkmann Memorial Travel Fellowship. Mr. Peak will use this fellowship to work with the International Centre for Diarrheal Disease Research in Bangladesh. The project, which is titled "Evaluating the Role of Human Mobility in Mass Oral Cholera Vaccine Campaigns", will bring together recent cholera vaccine field trial data, mobile phone data, and mathematical models of cholera transmission in order to address questions surrounding the duration of herd protection following mass vaccination campaigns.



- **Dr. Donna Spiegelman** was invited to speak at the 2016 Eastern North American Region International Biometric Society Spring Meeting and the Canadian Statistical Sciences Institute. The titles of Dr. Spiegelman's talks were, "Estimation and Inference for the incremental cost-effectiveness ratio for censored survival data" and "The Missing Covariate Indicator Method is Nearly Valid Almost Always",





HARVARD
T.H. CHAN

SCHOOL OF PUBLIC HEALTH

Harvard T.H. Chan School of Public Health
Department of Epidemiology
677 Huntington Ave, Kresge 9
Boston, MA 02115
hsph.harvard.edu/epidemiology

Scan this QR code
to access previous
Epicenters



YouTube

<http://goo.gl/5BnVws>



Follow [@Epi_HSPH](https://twitter.com/Epi_HSPH)

How to Subscribe

Subscriptions to Epicenter, the newsletter of Harvard's T.H. Chan School of Public Health Department of Epidemiology, are available at no charge, in print or PDF form. To subscribe, send your email or mailing address to:

Eric DiGiovanni - edigiova@hsph.harvard.edu

(Ideas for submission or comments are always welcomed)

Tel: 617-432-1328

Editorial Board: Eric DiGiovanni & David Vaughn