

The Global Health and Population Weekly Digest

Your weekly summary of department news updates, research activities, events and available opportunities

In This Issue

A Pilot to Promote Early Child Development within Health Systems in Mozambique: A Qualitative Evaluation

GHP authors Joshua Jeong, Lilia Bliznashka, Marilyn N. Ahun, and Aisha K. Yousafzai

Addressing Racial/Ethnic Inequities in Maternal Health Through Community-Based Social Support Services: A Mixed Methods Study

GHP author Ana Langer

Equity Impact of Minimum Unit Pricing of Alcohol on Household Health and Finances among Rich and Poor Drinkers in South Africa

GHP author Stéphane Verguet

Municipal Characteristics of In-Home Death Among Care-Dependent Older Japanese Adults

GHP authors Kazuhiro Abe, Ichiro Kawachi

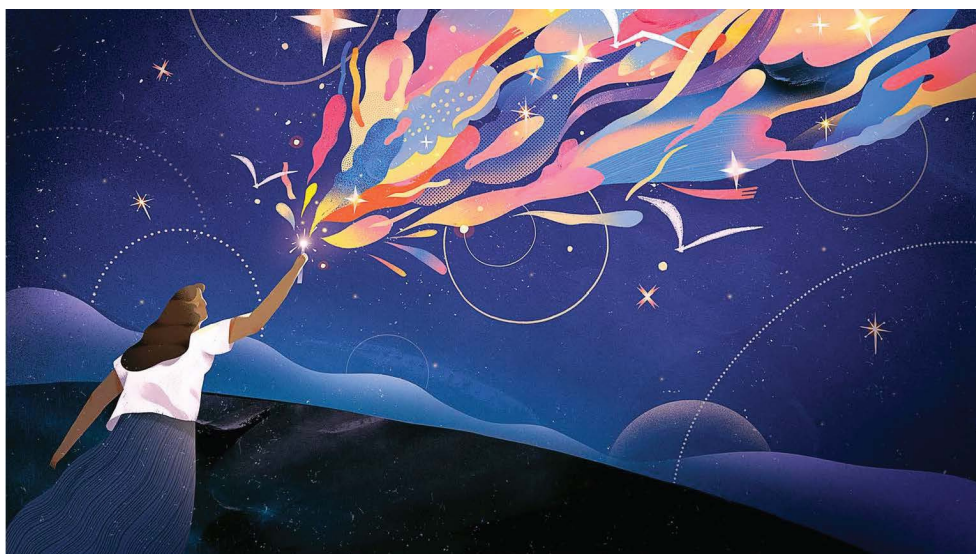
Department of Global Health and Population

p. 617-432-1231

e. gph@hsph.harvard.edu

a. 665 Huntington Ave. Boston, MA 02115

w. www.hsph.harvard.edu/global-health-and-population/



Dola Sun for NPR

Global Wishes for 2022: A Gift Box for Everyone, Greater Girl Power, Vertical Gardens

On January 7th, NPR asked global thinkers if they could wish for one thing, what would it be? Interviews included Nobel Peace Prize winners Malala Yousafzai and Nadia Murad, Dr. Raj Panjabi, the U.S. Global Malaria Coordinator of the U.S. President's Malaria Initiative and the Department of Global Health and Population's own Dr. Ana Langer, Director of [The Women and Health Initiative](#) and Professor of the Practice of Public Health who wishes that "girls and women around the world will have access to timely and quality maternal health care and safe and legal termination of mistimed or unwanted pregnancies — without legal and socioeconomic barriers, fear, coercion or discrimination." To read the full article of wishes for the New Year, [please click here](#).

Department News and Announcements

- This Wednesday, January 12th, **GHP student Leah Pierson published an op-ed in *The Boston Globe*** calling on universities to use put any surplus COVID-19 testing capacity they have to good use while students are not on campus. [Read the full article here.](#)
- Leah also recently published, in collaboration with her sister, an Op-Ed on U.S. health policy in *The New York Times* titled [Genetic Risks for Cancer Should Not Mean Financial Hardship.](#)
- **Dr. Sarah McCarthy was appointed the inaugural holder of the Magic City LGBTQ Health Studies Endowed Professorship at the University of Alabama, Birmingham, School of Public Health**, and began her appointment there as tenured Associate Professor in the Department of Health Behavior on December 1, 2021. Dr. McCarthy received her MS in 2007 and ScD in 2012 from the Department of Global Health and Population at The Harvard TH Chan School of Public Health, and then worked at the RAND Corporation in Santa Monica, CA, as a faculty member of the Pardee RAND Graduate School and a Policy Researcher, with extensive research on LGBTQ health. Please join the department in congratulating Dr. McCarthy!
- **Catherine Arsenault, Research Scientist in the Department Global Health and Population, was interviewed by *Forbes* for her research on health systems resilience during COVID-19:** [Harvard Researcher Talks Global Health Resilience Amid COVID-19.](#)
- **Dr. Shekhar Saxena, Professor of the Practice of Global Mental Health was recently interviewed in *Psychology in Society (PINS)*:** [Global Mental Health in an Unequal World: An interview with Shekhar Saxena.](#) Please visit the link to read the full transcript of the interview.
- **The department's Equity, Diversity, Inclusion and Belonging (EDIB) Committee, on behalf of the Dana Farber/Harvard Cancer Center's CURE Program, is actively recruiting new mentors.** CURE is a research training program for Summer 2022, servicing local high-school and college students from underrepresented and disadvantaged backgrounds. Currently celebrating its 20th anniversary, the highly sought after and well administered CURE program provides the required oversight to ensure meaningful impact and successful outcomes for their student trainees. This is a fantastic opportunity to not only give back to the Boston community, but to provide crucial exposure and training opportunities for graduate students and postdocs in the space of diversity and inclusion. [Click here to register](#) to host a CURE student with your basic science research group this summer.

Over the past few years, the program has grown considerably to serve an average of 100 trainees each summer. They are seeking research placements with an interest in joining a research environment this summer.

For additional information, please contact Karen Burns White, Program Director – kburnswhite@partners.org or Brittany Michel, Program Manager – Brittany_Michel@dfci.harvard.edu.

Recent Department Publications

[Understanding the Pathways from Prenatal and Post-birth PM2.5 Exposure to Infant Death: An Observational Analysis Using US Vital Records \(2011-2013\)](#)

GHP Authors Aayush Khadka and David Canning

Continued on page 3

Department Publications Continued

[Healthcare Practitioner's Experiences in Delivering Sexual and Reproductive Health Services to Unmarried Adolescent Clients in Jordan: Results from a Cross-sectional Survey](#)

GHP Authors Neena R. Kapoor, Ana Langer and Jewel Gausman

[Multivitamin Supplementation is Associated with Greater Adequacy of Gestational Weight Gain among Pregnant Women in Tanzania](#)

GHP Authors Dongqing Wang, Anne Marie Darling, Nandita Perumal, Wafaie Fawzi

[Practitioner Experiences Responding to Suicide Risk for Survivors of Human Trafficking in the Philippines](#)

Human trafficking survivors experience elevated suicide risk in comparison to the general population. Anti-trafficking service providers in the Philippines have identified capacity building in suicide prevention as a critical priority given the insufficient number of trained mental health professionals and lack of culturally adapted evidence-based interventions in the Philippines. We conducted a focused ethnography exploring the experiences of non-mental health professionals working in the anti-human trafficking sector in the Philippines in responding to suicidality among survivors of human trafficking. We discuss implications for training service providers in the anti-human trafficking sector, as well as cultural adaptation of suicide prevention interventions with human trafficking survivors in the Philippines.

GHP Author Elizabeth Hentschel

[Diabetes Mellitus, Maternal Adiposity, and Insulin-dependent Gestational Diabetes are associated with Covid-19 in Pregnancy: The INTERCOVID Study](#)

GHP Author Ana Langer

[Applying Human-Centered Design Principles to Digital Syndromic Surveillance at a Mass Gathering in India: Viewpoint](#)

GHP Author Satchit Balsari

[Postpartum Cliffs: Missed Opportunities to Promote Maternal Health in the United States](#)

GHP Author Jessica L. Cohen

[Expecting or Planning? There's Nothing Magic About Age 35](#). Published on January 5, 2022, this *New York Times* article discusses Dr. Cohen's publication.

Upcoming Events



The Planetary Health Colloquium

Planetary Mental Health: How Accelerating Environmental Change is Impacting the Mental Health of Different Populations

Presenter:
Frederick J. Stoddard Jr., MD
Associate Clinical Professor of Psychiatry at Harvard Medical School, Massachusetts General Hospital, and Shriners Hospitals

Presenter:
Caroline Hickman, MS
Lecturer, Department of Social & Policy Sciences, Centre for Analysis of Social Policy (CASP), University of Bath;

Presenter:
Ashlee Cunsolo, PhD
Founding Dean, School of Arctic and Subarctic Studies, Labrador Institute, Memorial University

Discussant:
Lise Van Susteren, MD
Practicing General and Forensic Psychiatrist, Washington, DC

Wednesday, 2 February 2022, 1:00- 2:00 ET
Registration: <https://harvard.zoom.us/meeting/register/tJctfumvqz4oH9OFVqJvFTVjqptCoCJNvpbc>

Sponsors:
Departments of Environmental Health, Global Health and Population, Immunology and Infectious Diseases, and Nutrition.

Co-Sponsors:



Questions? Contact: shaunheller@hsph.harvard.edu

Planetary Mental Health: How Accelerating Environmental Change is Impacting the Mental Health of Different Populations

February 2, 2022 1-2PM EST, Zoom [Register here](#)

The Planetary Health Colloquium began in October 2021 and will run through May 2022.

The fifth event in this series, [Planetary Mental Health: How Accelerating Environmental Change is Impacting the Mental Health of Different Populations](#), will be held virtually and additional information can be found on the [website](#).

GHP 231

Sexual and Reproductive Health:

A Global Perspective

Taught by Dr. Ana Langer

Spring 1: Tuesdays and Thursdays
11:30am - 1:00pm

What do the Sustainable Development Goals mean for women?

What are the most critical sexual and reproductive rights?

What are the main obstacles women face to access quality maternal health services?

This course will draw on the analysis of research, programs and policies to provide a comprehensive survey of the reproductive health field.

Students will discuss, debate, and contribute from their own experiences in a highly interactive learning environment.



HARVARD
T.H. CHAN

SCHOOL OF PUBLIC HEALTH
Women and Health Initiative



© 2008 Niemi Ritva, Courtesy of Photoshare, Tanzania

This course counts toward the Women, Gender and Health Concentration and the Maternal and Child Health/ Children, Youth and Families Concentration

Open Calls for Applications

- **Women, Gender and Health is now seeking applicants for the Student Staff Coordinator position for 2022-2023 Academic Year.** Eligible applicants include Masters and Doctoral students who will be a student in May 2023. This position is a great way to set priorities, lead events, and connect with faculty and researchers in women and gender health topics. For more information on what this position entails and the application process, please contact wgh@hsph.harvard.edu.
- **Intensive Summer Course on Migration and Refugee Studies in Greece.** Are you interested in learning more about refugee and migration rights? The FXB Center for Health and Human Rights at Harvard University, in collaboration with the National and Kapodistrian University of Athens, Greece, and with the support of the Harvard Center for Hellenic Studies in Greece and the U.S, is offering a three-week intensive, interdisciplinary, summer course on migration and refugee studies in Greece. Harvard graduate students across all schools and degree programs may apply, but admission is limited to 15 individuals. The course offers you the opportunity to engage both conceptually and practically with key issues related to contemporary forced migration. **Applications are due February 15, 2022.** [Program details and application materials can be found here.](#)
- **The Harvard Humanitarian Initiative** is hiring and are looking for mission-driven people who want to make a difference in the humanitarian field globally. [Click here to view all open positions.](#)
- The Seeding Relations Conference Committee is thrilled to announce the virtual 2022 Mahindra Humanities Center Interdisciplinary Graduate Student Conference at Harvard University, Seeding Relations: Beyond Settler Colonial and Racialized Ecologies. This two-day online conference will be held on Zoom on Friday, March 25 and Saturday, March 26, 2022. [Click here for submission deadlines and application rules.](#)
- The Division of Nutritional Science at Cornell University has announced four open faculty positions. [Click here for more information.](#)

Opportunities in Global Health and Population

Academic Positions

- [Research Scientist in Health & Elderly Care Policy and Systems in China](#)
- [Post-doctoral fellowship with Kevin Croke and Margaret Kruk](#)

Staff Positions

- [Coordinator I \(Program Coordinator\)](#)

Internal Student Positions/Internships

- [Research Assistant: Improving Maternal Health Measurement Capacity and Use](#)

