

# The Global Health and Population Weekly Digest

*Your weekly summary of department news updates, research activities, events and available opportunities*

## In This Issue

**Adherence to COVID-19 Protective Behaviours in India from May to December 2020: Evidence from a Nationally Representative Longitudinal Survey**

GHP authors Arunika Agarwal and David Bloom

**Revealing the Hidden Value of Vaccines**

Featuring Muhammed Pate

**Digital Transformation and Healthcare Innovation**

**Insights into Labor Force Participation among Older Adults: Evidence from Longitudinal Ageing Study in India**

GHP Author David Bloom

**The Costs and Benefits of Primary Prevention of Zoonotic Pandemics**

GHP Author Marcia Castro

**Department of Global Health and Population**

phone. 617-432-1231

email. ghp@hsph.harvard.edu

address. 665 Huntington Ave. Boston, MA 02115

website. [www.hsph.harvard.edu/global-health-and-population/](http://www.hsph.harvard.edu/global-health-and-population/)

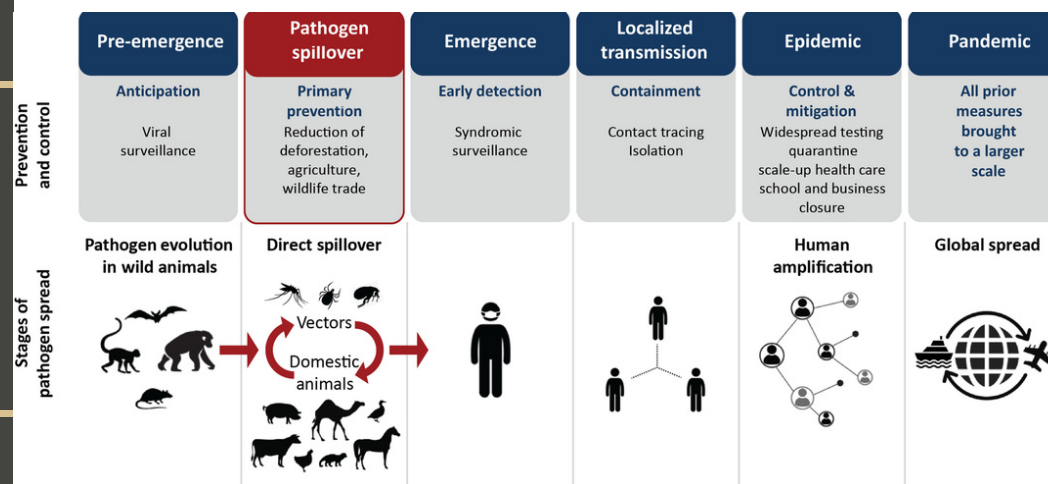


Fig. Phases of pathogen emergence, from local to global. The World Health Organization identifies five phases to which we have added a sixth: pathogen spillover

## Research Shows Actions to Prevent Pandemics Cost 5% of Lives Lost Every Year from Emerging Infectious Diseases

Two years after COVID-19 emerged, researchers have provided three cost-effective actions to help decision-makers prevent future pandemics by stopping “spillover” of diseases from animals into humans: better surveillance of pathogens, better management of wildlife trade and hunting, and reduced deforestation. The annual costs of these “primary pandemic prevention” actions (~\$20 billion) are less than 5% of the lowest estimated value of lives lost from emerging infectious diseases every year, less than 10% of the economic costs, and provide substantial co-benefits. The research by 20 experts, published in [Science Advances](#), was led by Dr. Aaron Bernstein, director of the Center for Climate, Health, and the Global Environment at Harvard T.H. Chan School of Public Health.

“Resources placed into reducing deforestation are an investment to prevent future epidemics, but also to mitigate current threats, such as malaria and respiratory diseases associated with the burning of the forest,” said **Marcia Castro**, Andelot professor of demography and chair of the Department of Global Health and Population at Harvard Chan School. “Making these investments in prevention brings returns to human health, to the environment, and to economic development.”

# Upcoming Courses

## **GHP 231**

**Sexual and Reproductive  
Health:  
A Global Perspective  
Taught by Dr. Ana Langer**

Spring 1: Tuesdays and Thursdays  
11:30am - 1:00pm

**What do the Sustainable  
Development Goals mean for  
women?**

**What are the most critical  
sexual and reproductive rights?**

**What are the main obstacles  
women face to access quality  
maternal health services?**

This course will draw on the  
analysis of research, programs  
and policies to provide a  
comprehensive survey of the  
reproductive health field.

Students will discuss, debate,  
and contribute from their own  
experiences in a highly  
interactive learning environment.



**SCHOOL OF PUBLIC HEALTH**  
Women and Health Initiative



© 2008 Niemi Ritva, Courtesy of Photoshare, Tanzania

**This course counts toward the Women, Gender and Health Concentration and the  
Maternal and Child Health/ Children, Youth and Families Concentration**

**Upcoming Spring semester course: GHP 231 - Sexual and Reproductive  
Health: A Global Perspective**

Taught by Professor of the Practice of Public Health and Director of the  
Women and Health Initiative, **Dr. Ana Langer**, this course will take place  
during Spring 1 on Tuesdays and Thursdays from 11:30am-1pm





## **MENTAL HEALTH CARE LEADERSHIP CHAMPIONS**

### A Three-Program Certificate of Specialization



The unmet needs for care for mental health problems have always been large; they have only increased during the current pandemic. Mental Health Care Leadership Champions will help narrow this gap by training and mentoring forward-thinking leaders.

The Certificate of Specialization comprises three programs, taught by faculty from the **Harvard School of Public Health**, the **GlobalMentalHealth@Harvard Initiative** and an international pool of experts, embracing both empirical evidence and real-world lessons. Through this training and mentoring program, professionals from around the world will empower themselves to scale-up evidence-based and innovative programs to address the mental health needs of their communities with knowledge, skills, and peer support.

### **WHO SHOULD APPLY**

This program is designed for practitioners, policy advisors, health administrators, service planners, business leaders, and civil society organization executives with a responsibility for mental health.

Participants may hold titles such as:

- Director of mental health
- Administrator of mental health
- Mental health consultant
- Commissioner of mental health
- Chief mental health officer
- Human resource director

CLINICIANS

EXECUTIVES

ADMINISTRATORS

### **PROGRAM ONE: FOUNDATIONS OF MENTAL HEALTH CARE**

**Tuesdays and Thursdays | 12-1 PM ET | May 3-June 2, 2022 | \$2800 USD**

This program will focus on understanding the mental health needs of diverse populations and how to deliver quality care by deploying the latest innovations. The Foundations of Mental Health Care will prepare participants to:

- Leverage evidence-based strategies and programs to address unmet mental health care needs
- Adopt a dimensional approach for addressing the full spectrum of mental health problems
- Utilize a life course perspective to prioritize mental health care services
- Implement innovations in mental health and addiction care including task sharing, digital interventions, and community-based treatment

**[HSPH.ME/MENTALHEALTH-FOUNDATIONS](https://hsph.me/mentalhealth-foundations)**





## PROGRAM TWO: SCALING UP MENTAL HEALTH CARE

Tuesdays and Thursdays | 12-1 PM ET | Oct 4-Nov 3, 2022 | \$2800 USD

The second program will build on foundational knowledge with insights to advance participants' executive and leadership skills for scaling up mental health care, including how to:

- Carry out policy analysis and plan care programs
- Design and deliver innovative, client-focused services
- Mobilize and deploy human and financial resources
- Monitor, evaluate, and optimize services to achieve sustainable impact

## PROGRAM THREE: MENTAL HEALTH CARE CHAMPIONS PEER LEARNING COLLABORATIVE

12 Monthly One-Hour Sessions | 12-1 PM ET | DATE TBD | \$2800 USD

Find innovative solutions to real-life problems by sharing experiences and expertise with peers and faculty in monthly sessions and an online discussion board. These collaborations will open avenues for conversations about:

- The latest developments in evidence-based programs across the world
- The applicability of innovations in the participant's settings
- The key points taken from the successes and failures of peers and program faculty
- The peer group's unique real-life problems as topics for in-depth consultation

## CORE FACULTY



**Shekhar Saxena,  
MD**

Professor of the  
Practice of Global  
Mental Health,

Department of Global

Health and Population,  
**Harvard T.H. Chan School of  
Public Health** Former Director,  
Mental Health, **World Health  
Organization**



**Giuseppe Raviola,  
MD, MPH**

Assistant Professor  
of Psychiatry, and  
of Global Health and

Social Medicine, Director

of the Program in Global Mental  
Health and Social Change,  
**Harvard Medical School**  
Associate Director of the Chester  
M. Pierce, MD Division of  
Global Psychiatry, **Massachusetts  
General Hospital** Director of  
Mental Health, **Partners In Health**



**Vikram Patel, PhD,  
MBBS**

The Pershing  
Square Professor  
of Global Health and

Wellcome Trust Principal

Research Fellow, **Harvard  
Medical School**, Professor,  
Department of Global Health and  
Population, **Harvard T.H. Chan  
School of Public Health**, Co-lead,  
GlobalMentalHealth@Harvard,  
**Harvard University**

*THESE PROGRAMS HAVE BEEN DEVELOPED AS AN INITIATIVE OF [GLOBALMENTALHEALTH@HARVARD](mailto:GLOBALMENTALHEALTH@HARVARD).  
THE SUPPORT OF [WELL BEING TRUST](https://www.wellbeingtrust.org/) IS GRATEFULLY ACKNOWLEDGED.  
PROGRAM DETAILS SUBJECT TO CHANGE.*

For more information, please visit  
[hsph.me/portfolio](https://hsph.me/portfolio) or email [contedu@hsph.harvard.edu](mailto:contedu@hsph.harvard.edu)



@HarvardChanECPE



facebook.com/HarvardChanECPE



[hsph.me/ECPELinkedIn](https://hsph.me/ECPELinkedIn)

**HSPH.ME/MENTALHEALTH-FOUNDATIONS**

# Upcoming Events

## HHI ENP THEMATIC BRIEFING WEBINAR SERIES

### HUMANITARIAN NEGOTIATION AND TECHNOLOGIES -- THREATS AND OPPORTUNITIES

TUESDAY, FEBRUARY 15, 2022 10-11AM EDT

RSVP HERE!

Featuring guest speakers:



**Ziad Al Achkar**

Ph.D. Candidate at the Jimmy and Rosalynn Carter School for Peace and Conflict Resolution at George Mason University



**Maxwell E. Bevilacqua**

Founder and Principal of MaxNegotiating LLC



**Rob Grace**

Affiliated Fellow at the Center for Human Rights and Humanitarian Studies, Watson Institute for International and Public Affairs, Brown University



**Alice Maillot**

Humanitarian Practitioner and Team Leader at the International Committee of the Red Cross

For future updates on HHI ENP events visit our [website](#) or join our [mailing list](#).



EXECUTIVE NEGOTIATION PROJECT  
ADVANCED STRATEGIES FOR HUMANITARIAN LEADERS

The Harvard Humanitarian Initiative ENP Thematic Briefing webinar series presents, *Humanitarian Negotiation and Technologies – Threats and Opportunities* Tuesday, February 15, 2022, 10-11am EST

[Register here](#)

While much has been written about the role of technology on humanitarian action, the implications of technology on humanitarian negotiation are under studied. The Humanitarian Negotiation and Technologies – Threats and Opportunities webinar presents a platform for a diverse panel to have an exploratory discussion about how the rapidly changing digital landscape affects humanitarian negotiation now and in the future. Panelists will further discuss the significance of tech-centered tools in negotiation, discuss the challenges and opportunities, and share areas of exploratory research and action for the future. The webinar is open to the public and all are welcome. Email [hhi.negotiation@gmail.com](mailto:hhi.negotiation@gmail.com) for event information.

## THE LANCET Webinars

### The Global launch of the Lancet-World Psychiatric Association Commission: Time for United Action on Depression

Wednesday, February 16, 2022, 7am EST [Register here](#)

By aligning knowledge about depression from many fields, the Lancet-World Psychiatric Association Commission on depression has synthesized evidence from diverse contexts and generated action-oriented recommendations for a variety of stakeholders: communities and those affected by depression and their families; clinicians and public health practitioners; researchers who work to understand and address depression; and policy makers and financiers of health care. Join The Lancet's Richard Horton and Miriam Lewis Sabin for the launch of this Commission where Commission co-Chairs will present the key messages and invited speakers representing these stakeholders will discuss and reflect on the significance and implementation of these recommendations. The session will conclude with a Q&A session with the co-Chairs.

Featured speakers include: Afzal Javed, President, World Psychiatric Association (WPA), Helen Herrman, Chair, The Lancet-WPA Commission on Depression, **Vikram Patel**, Chair, The Lancet-WPA Commission on Depression, Christian Kielsing, Co-Chair, The Lancet-WPA Commission on Depression, Opeyemi Lawal, Director, Asido Foundation for Mental Health, Vivek H. Murthy, U.S. Surgeon General, Soumya Swaminathan, Chief Scientist, World Health Organization and, Anna Stavdal, President, World Organization of Family Doctors (WONCA).





**Dr. Phuong Pham**

**Upcoming Webinar!**

**Finding the Path Forward:  
Highlighting Marginalized Refugee  
Women and Girls' Experiences of  
GBV in the Global South**

Thursday, February 17, 2022  
9 AM EST

**Register here:**  
<https://bit.ly/3HQfK1Y>

The Global Women's Institute  
THE GEORGE WASHINGTON UNIVERSITY

BUILDING GBV EVIDENCE  
In Conflict and Refugee Settings

**Finding the Path Forward: Highlighting Marginalized Refugee Women and Girls' Experiences of GBV in the Global South**

Thursday, February 17, 2022, at 9am EST, [Register here](https://bit.ly/3HQfK1Y)

GWI's Building GBV Evidence program will be hosting a four-part webinar series over this year to dive deeper into gaps and opportunities around GBV research in humanitarian settings. Please join us for the second session, "Finding the Path Forward: Highlighting Marginalized Refugee Women and Girls' Experiences of GBV in the Global South."

**Featuring Dr. Phuong Pham, PhD, MPH**, Assistant Professor at the Harvard Medical School and Harvard T.H. Chan School of Public Health and Director of Education and Director of Evaluation and Implementation Science at the Harvard Humanitarian Initiative (HHI).



**HARVARD T.H. CHAN SCHOOL OF PUBLIC HEALTH**  
Department of Global Health and Population

**BROWN BAG SEMINAR**

**Berk Özler, Ph.D.**

Lead Economist & Research Manager,  
Development Research Group,  
The World Bank

**Shared Decision-Making: Can Improved Counseling Increase Willingness to Pay for Modern Contraceptives?**

Thursday, February 17th  
01.00 PM ET  
-  
02.00 PM ET via Zoom

**About this seminar**  
Dr. Özler will discuss his research on a shared decision-making approach in family planning in which providers use a tablet-based counseling app to help clients choose a method best-suited to her needs and preferences. He will present results from a pilot adaptive experiment testing counseling approaches and price discounts for contraception on the take-up of long-acting reversible contraception.

E : [bozler@worldbank.org](mailto:bozler@worldbank.org)  
W : [http://hsph.me/BB\\_GHP](http://hsph.me/BB_GHP)

**GHP Thursday Brown Bag Series: *Shared Decision-Making: Can Improved Counseling Increase Willingness to Pay for Modern Contraceptives?***

Thursday, February 17, 2022, 1-12pm EST  
[Zoom link here](#), no registration

Join the department on Zoom for the return of our weekly Thursday Brown Bag Series. Next week, **Berk Özler** will discuss his research on a shared decision-making approach in family planning in which providers use a tablet-based counseling app to help clients choose a method best-suited to her needs and preferences. He will present results from a pilot adaptive experiment testing counseling approaches and price discounts for contraception on the take up of long-acting reversible contraception. Dr. Özler serves as a Lead Economist & Research Manager within the Development Research Group at the World Bank.

Questions? Please contact Jessica Majano:  
[jmajanoguevara@hsph.harvard.edu](mailto:jmajanoguevara@hsph.harvard.edu)

The Office of Diversity & Inclusion Presents:

# Recognizing The Role of HBCUs in Health & Medicine

A panel discussion facilitated by Equity,  
Diversity & Inclusion Fellow Tawana Feimster.



**Gina Brown**  
Chief Servant and Dean  
Howard University



**Crystal James**  
Associate Professor  
Tuskegee University



**Danielle King**  
Assistant Professor  
Rice University

Wednesday, February 17 at 1:00pm  
Register Here: [hsph.me/hbcu](https://hsph.me/hbcu)



SCHOOL OF PUBLIC HEALTH  
Office of Diversity and Inclusion

## Recognizing the Role of HBCUs in Health and Medicine

Thursday, February 17, 2022, 1-12pm EST

[Register here](#)

In celebration of Black History Month, the office of Diversity and Inclusion (ODI) will host a webinar panel discussion Recognizing the Role of Historically Black College Universities (HBCUs) in Health and Medicine,

The panel will feature guest panelists: Gina Brown, Chief Servant and Dean at Howard University; Crystal James, Associate Professor at Tuskegee University; and Danielle King, Assistant Professor at Rice University. The Panel will be moderated by Equity, Diversity and Inclusion Fellow Tawana Feimster.

# Open Call for Applications

- **Women, Gender and Health is now seeking applicants for the Student Staff Coordinator position for 2022-2023 Academic Year.** Eligible applicants include Masters and Doctoral students who will be a student in May 2023. This position is a great way to set priorities, lead events, and connect with faculty and researchers in women and gender health topics. For more information on what this position entails and the application process, please contact [wgh@hsph.harvard.edu](mailto:wgh@hsph.harvard.edu).
- **Intensive Summer Course on Migration and Refugee Studies in Greece.** Are you interested in learning more about refugee and migration rights? **The FXB Center for Health and Human Rights at Harvard University, in collaboration with the National and Kapodistrian University of Athens, Greece, and with the support of the Harvard Center for Hellenic Studies in Greece and the U.S, is offering a three-week intensive, interdisciplinary, summer course on migration and refugee studies in Greece.** Harvard graduate students across all schools and degree programs may apply, but admission is limited to 15 individuals. The course offers you the opportunity to engage both conceptually and practically with key issues related to contemporary forced migration. **Applications are due February 15, 2022.** [Program details and application materials can be found here.](#)
- Foundation for a Healthier Senegal is hiring a FOSHEN Fellow. [For qualifications and additional details, please click here.](#)
- **The Seeding Relations Conference Committee** is thrilled to announce **the virtual 2022 Mahindra Humanities Center Interdisciplinary Graduate Student Conference at Harvard University, Seeding Relations: Beyond Settler Colonial and Racialized Ecologies.** This two-day online conference will be held on Zoom on Friday, March 25 and Saturday, March 26, 2022. [Click here for submission deadlines and application rules.](#)
- **The Division of Nutritional Science at Cornell University** has announced four open faculty positions. [Click here for more information.](#)
- The GlobalMentalHealth@Harvard Initiative Steering Committee is proud to announce [the Mental Health Care Leadership Champions Program](#) which will be delivered through the Executive and Continuing Professional Education at the Harvard T.H. Chan School of Public Health. The Certificate of Specialization comprises three programs, taught by faculty from the Harvard School of The Certificate of Specialization comprises three programs, taught by faculty from the Harvard School of Public Health, the GlobalMentalHealth@Harvard Initiative and an international pool of experts, embracing both empirical evidence and real-world lessons. Through this training and mentoring program, professionals from around the world will empower themselves to scale-up evidence-based and innovative programs to address the mental health needs of their communities with knowledge, skills, and peer support.
- **The department's Equity, Diversity, Inclusion and Belonging (EDIB) Committee, on behalf of the Dana Farber/Harvard Cancer Center's CURE Program, is actively recruiting new mentors.** CURE is a research training program for Summer 2022, servicing local high-school and college students from underrepresented and disadvantaged backgrounds. Currently celebrating its 20th anniversary, the highly sought after and well administered CURE program provides the required oversight to ensure meaningful impact and successful outcomes for their student trainees. This is a fantastic opportunity to not only give back to the Boston community, but to provide crucial exposure and training opportunities for graduate students and postdocs in the space of diversity and inclusion. [Click here to register](#) to host a CURE student with your basic science research group this summer. Over the past few years, the program has grown considerably to serve an average of 100 trainees each summer. They are seeking research placements with an interest in joining a research environment this summer. For additional information, please contact Karen Burns White, Program Director – [kburnswhite@partners.org](mailto:kburnswhite@partners.org) or Brittany Michel, Program Manager – [Brittany\\_Michel@dfci.harvard.edu](mailto:Brittany_Michel@dfci.harvard.edu).



# Opportunities in Global Health and Population

## Academic Positions

- Professor of Ethics and Population Health **NEW!**
- Research Scientist in Health & Elderly Care Policy and Systems in China
- Post-Doctoral Fellowship with Kevin Croke and Margaret Kruk
- Postdoctoral Fellow in Health Economics with Stéphane Verguet **NEW!**

## Staff Positions

- Coordinator I (Project Coordinator)
- Research Assistant IV Non-Lab (Research Data Analyst)

## Internal Student Positions/Internships

- Research Assistant: Improving Maternal Health Measurement Capacity and Use
- Student Research Assistant to Dr. Muhammed Pate **NEW!**
- Quantitative Research Assistant: Memory and Migration Project, Mental Health For All Lab
- Qualitative Research Assistant: Memory and Migration Project, Mental Health For All Lab

**The Harvard Humanitarian Initiative** is hiring and are looking for mission-driven people who want to make a difference in the humanitarian field globally. [Click here to view all open positions.](#)

