

STUDENT WELCOME GUIDE

OFFICE FOR STUDENT AFFAIRS



HARVARD
T.H. CHAN
SCHOOL OF PUBLIC HEALTH
Powerful ideas for a healthier world

CORE VALUES OF THE HARVARD T.H. CHAN SCHOOL OF PUBLIC HEALTH

Health is a fundamental right of every human being.

—

Public health has the responsibility to improve and protect the health of all populations, especially the most vulnerable of these—children, the elderly, the poor, and the underserved.

—

Public health must emphasize prevention and embrace collective, multifaceted action by health practitioners and researchers to respond to emerging challenges; it must investigate disease determinants and risks, improve health care quality and delivery, and influence policy.

—

Institutions of public health should provide information that promotes health in populations and empowers individuals to make sound health decisions.

—

The educational and research agenda of a public health institution must transcend local and national boundaries—health is a global concern.

—

A public health institution should support the ideal of service in all its aspects—research, teaching, community involvement, and communication.

—

All members of a public health institution should respect the highest principles of scientific and academic conduct, foster open inquiry, and honor individual rights.



CONTENTS

WELCOME TO CAMPUS 4

Welcome from Dean of Faculty Michelle A. Williams
Departments and Programs Directory
2022-2023 Academic Calendar
Communication and Publications

ACADEMIC AFFAIRS 10

Office for Student Affairs
Office of Financial Aid
Registrar's Office
Student Billing
Office of Diversity and Inclusion
 Community Engagement
Office of Educational Programs
Office of Career and Professional Development
Harvard International Office

STUDENT SUPPORT 20

Disability Accommodations
Graduate Student Learning Support
Content-Based Tutoring
Global Support Services
Harvard University Health Services
 Medical Emergencies
 Urgent Care
Counseling and Mental Health Services
Center for Wellness
Ombuds
Sexual Harassment and Other Sexual Misconduct
Harvard Immigration and Refugee Clinical Program
Safety and Security

STUDENT LIFE 30

Harvard Chan Student Association
Student Organizations
Student Employment
Family and Childcare
Harvard Chaplains
 Harvard T. H. Chan Reflection Room
Countway Library
Facilities
Sustainability
Harvard University ID Card
 Harvard University ID Benefits
 HUID for Spouses and Partners
Crimson Cash
Harvard University Employees Credit Union
Department of Information Technology-
Student Computing
Canvas

LIFE IN BOSTON 44

Transportation
Local Resources and Amenities
Outdoor Activities
Indoor Activities
Outings and Innings
Voting
Massachusetts ID/License

Welcome

to campus



FROM DEAN OF FACULTY MICHELLE A. WILLIAMS

Dear New Students,

Welcome to the Harvard T.H. Chan School of Public Health. We are thrilled that you have chosen to join our unique and exciting academic community at one of the most critical times facing the health of citizens around the globe. The devastating effects of COVID-19 on lives and economies have made clear the urgency and importance of public health. You are here because you have chosen to act, to run at this challenge, to embrace it. Our school is made up of world-renowned faculty, prominent researchers, and—most important—dedicated and resilient students like you.

We all arrive at this School with our own goals and aspirations. I'm the first in my family to go to college. While studying genetics at Princeton, I found it didn't feel right to me to pursue knowledge chiefly for knowledge's sake. I felt obligated to share that knowledge and leverage it to solve problems.

My choice to pursue knowledge translation led me to the Harvard Chan School for graduate work, a place where life scientists and population scientists work side by side addressing real-world problems in real time. I became an epidemiologist—someone who studies the distribution and determinants of diseases with the goal of preventing their spread. I knew that for me, public health was about more than academics. It was also about activism.

In public health we can go from genes to the globe, from urban design to vaccine design, from health literacy to health economics, from computational biology to violence prevention. We tackle everything from climate change to equity issues. But what brings us together as students and faculty, whether we focus more on public health research or practice, is a shared excitement for learning, and a shared commitment to making people's lives healthier and better.

My wish is that you be open to all the new skills you will acquire and all the interesting people you will meet during your time at the School. I know that in the months ahead you will learn a lot from your classmates, who come from many different countries, backgrounds, and prior academic and career experiences. Similarly, I hope you are fortunate enough to forge some wonderful relationships with teachers and mentors who will help you at this most pivotal period of your development. Such relationships and shared experiences will sustain and inspire you for a lifetime.

Gratitude has been one of the biggest drivers of my career. So let me close by saying that I am grateful to you for choosing the Harvard Chan School and for all that you bring to this community. Your intellect, your passion, and your willingness to celebrate each other's talents are all an inspiration to me. While you have much to learn in the year ahead, I know that I and the entire faculty will also learn a lot from you.

I look forward to sharing as much time with you as possible as we work together to create and promote powerful ideas that will improve the health and well-being of people around the world.

Sincerely,
Michelle A. Williams, SM '88, ScD '91
Dean of the Faculty

DEPARTMENTS AND PROGRAMS DIRECTORY

The following is a list of Harvard T.H. Chan School of Public Health departments and programs, their corresponding abbreviations, and administrative points of contact.

DEPARTMENT ABBREVIATION	DEPARTMENT	ADMINISTRATOR	ADDRESS	TELEPHONE
BST	Biostatistics	Jelena Follweiler	SPH2-408	617-432-1087
CBQG	Computational Biology and Quantitative Genetics	Jelena Follweiler	SPH2-408	617-432-1087
DBS/BPH	Division of Biological Sciences /PhD Program in Biological Sciences in Public Health	Tatevik Holmgren Eric Creighton	SPH2-111 SPH2-119	617-432-4397 617-432-7703
DrPH	Doctor of Public Health	Gary Williams	Kresge G29	617-432-5008
EH	Environmental Health	Barbara Zuckerman	SPH1-1304	617-432-2109
EPI	Epidemiology	Eric DiGiovanni Caroline Huntington Jeffrey Noyes	Kresge 903 Kresge 901 Kresge 901	617-432-1328 617-432-5250 617-432-7973
GHP	Global Health & Population	Barbara Heil Allison Conary	SPH1-1108d SPH1-1108	617-432-1179 617-432-2253
HPM	Health Policy & Management	Jennifer Moltoni Colin Fleming Nicole Pires	Kresge 338 Kresge 320 Kresge 336	617-432-4324 617-432-7075 617-432-4506
IID	Immunology & Infectious Diseases	Andrea Sabaroff	FXB-301	617-432-1023
MET	Molecular Metabolism	Katrina Soriano	SPH2-107	617-432-0764
MPH	Master of Public Health	Anne Occhipinti Emily Davies Stephanie Lemoine	Kresge G29 Kresge G29 Kresge G29	617-432-3530 617-432-3042 617-432-1558
NUT	Nutrition	Stefanie Dean	SPH2-310	617-432-1528
PHS	PhD in Population Health Sciences	Bruce Villineau	Kresge G10	617-432-6076
SBS	Social and Behavioral Sciences	Elizabeth Solomon Whitney Waddell Teresa Bellone Daniel Choi	Kresge 617 Kresge 622 Kresge 618 Kresge 614	617-432-3761 617-432-3689 617-432-3775 617-432-3787

2022-2023 ACADEMIC CALENDAR

June Term Check-in/Orientation	Jun 6	New Year's – a holiday	Jan 1
June Term Courses Begins	Jun 6	Winter Session Courses Begin	Jan 3
June Term Courses Ends	Jun 24	Martin Luther King, Jr. Day – a holiday	Jan 16
Independence Day – a holiday	Jul 4	Winter Session Courses End	Jan 20
Summer Check-in/Orientation	Jul 5	Spring and Spring 1 Courses Begin	Jan 23
Summer Session Courses Begins	Jul 6	Add/Drop/Change Deadline: Spring & Spring 1 Term Courses for All Degree, Cross-Registration and Non- Degree Students	Feb 2
Summer 1 Term Ends	Jul 22	Withdrawal Deadline: Spring 1 Term courses	Feb 17
Summer 2 Begins	Jul 25	Presidents' Day – a holiday	Feb 20
Summer 2 Ends	Aug 12	Spring 1 Term Courses End	Mar 10
Fall Check-in/Orientation	Aug 22	Spring Recess Begins	Mar 13
Fall Orientation Ends	Aug 26	Spring Recess Ends	Mar 17
Fall and Fall 1 Courses Begin	Aug 29	Spring 2 Courses Begin	Mar 20
Labor Day – a holiday	Sept 5	Add/Drop/Change Deadline: Spring 2 Term Courses for all Degree and Non-Degree Students and for Spring 2 Cross-Registration	Mar 30
Add/Drop/Change Deadline: Fall & Fall 1 Courses for Degree, Cross- Registration and Non-Degree Students	Sept 8	Withdrawal Deadline: Spring Semester and Spring 2 Term courses	April 14
Withdrawal Deadline: Fall 1 Term courses	Sept 23	Spring and Spring 2 Courses End	May 12
Indigenous Peoples Day – a holiday	Oct 10	Graduation Week	May 22-26
Fall 1 Courses End	Oct 21	Convocation	TBD
Fall 2 Courses Begin	Oct 24	Harvard University Commencement	May 25
Add/Drop/Change Deadline: Fall 2 Term Courses for All Degree, Cross-Registration and Non-Degree Students	Nov 3	Memorial Day – a holiday	May 29
Withdrawal Deadline: Fall Semester and Fall 2 Term courses	Nov 10		
Veterans' Day – a holiday	Nov 11		
Thanksgiving Recess	Nov 23-25		
Fall and Fall 2 Courses End	Dec 16		
Winter Recess	Dec 19-30		

COMMUNICATION AND PUBLICATIONS

STUDENT NEWS

Student News is a weekly digest of news and submitted announcements sent to your Harvard University email address. It contains important information about deadlines, course offerings, upcoming events, and general information.

Unless specifically stated otherwise, the events and activities promoted via Student News do not imply endorsement by, nor official policy of, the Office for Student Affairs or the Harvard T.H. Chan School of Public Health.

To post messages to the digest, use the online submission form: [hsph.me/submitstudentnews](https://hsph.harvard.edu/submitstudentnews)

HARVARD CHAN SCHOOL NEWS

Visit hsph.harvard.edu/news to stay up-to-date on the latest news and research from the School, including articles, podcasts, and videos.

HARVARD PUBLIC HEALTH MAGAZINE

Published three times each year, Harvard Public Health magazine takes an in-depth look at key public health issues and how the School is responding. Read online by visiting hsph.harvard.edu/magazine.

KIOSK

All students receive Kiosk, the School's internal email newsletter. It is delivered every Thursday during the school year and every other Thursday during the summer and highlights school news, research, awards, and upcoming events.

COVID-19 UPDATE

The latest news and research from Harvard Chan School on the COVID-19 pandemic, sent weekly. Subscribe to COVID-19 Update: hsph.harvard.edu/news/newsletters

NUTRITION SOURCE UPDATE

This monthly newsletter includes nutrition news and tips from Harvard Chan experts. Subscribe to Nutrition Source Update: hsph.harvard.edu/news/newsletters



BETTER OFF

The School's flagship podcast asks how we can make our families, communities, and our world a little bit better during the COVID-19 crisis, and beyond. Subscribe via Apple Podcasts, Google Podcasts, Spotify, or listen to the latest episodes: better-off.simplecast.com

FOLLOW HARVARD CHAN SCHOOL ON SOCIAL MEDIA

Twitter: [@HarvardChanSPH](https://twitter.com/HarvardChanSPH)

Facebook: facebook.com/harvardpublichealth

Instagram: [@harvardchansph](https://instagram.com/harvardchansph)

LinkedIn: linkedin.com/school/harvardpublichealth

YouTube: youtube.com/HarvardPublicHealth

Tag us in your posts!

THE HARVARD CRIMSON

The Harvard Crimson, the nation's oldest continuously published daily college newspaper, was founded in 1873 and incorporated in 1967. The Harvard Crimson is the daily newspaper of Harvard College. To read articles visit: thecrimson.com.

HARVARD GAZETTE

The Harvard Gazette is the official news outlet for Harvard University. The Gazette covers Harvard innovation and discovery in teaching, learning, and research. news.harvard.edu/gazette.



Academic

Affairs





CONTACT INFORMATION

Email: studentaffairs@hsph.harvard.edu

Phone: 617-432-1036

Location: Kresge G4

OFFICE FOR STUDENT AFFAIRS

The Office for Student Affairs (OSA) works to enrich and support you during your time at the School. We do this by offering a broad range of educational, cultural, and social programming as well as serving as a connection to resources in the Harvard community and beyond.

ENGAGEMENT

- Graduation
- Orientation
- Social and community building activities
- Student Association
- Student organizations
- Student support and wellness programming

PERSONAL AND ACADEMIC SUPPORT

- Assist students with disabilities by providing services and accommodations
- Referrals for counseling, medical, and personal care
- Referrals to Graduate Student Learning Support (GSLs)
- Tutor resources

SERVICES

- Housing resources
- International travel emergency support
- MBTA Semester Pass Program
- Student lockers
- Student News

To learn more about OSA, please visit our website at hsph.harvard.edu/student-affairs.



OFFICE OF FINANCIAL AID

The role of the Office of Financial Aid (OFA) is to assist students with financing their education at the Harvard T.H Chan School of Public Health. The staff is committed to providing students with the information needed to make informed decisions about financing their Harvard Chan School education.

The OFA staff are available throughout the year to discuss all aspects of educational financial planning: loan debt management, financial wellness/health, student billing, refund processing, and other areas as requested. We have monthly open office hours that we advertise on Facebook and in Student News.

FUNDING YOUR DEGREE:

- ✓ Log-in to my.harvard.edu and click on “Student Accounts” to familiarize yourself with your bill/current amount due
- ✓ View your financial aid at: hsph.me/myfinaid
- ✓ Like our Facebook page: facebook.com/HarvardChanOFA
- ✓ Review the Student Billing website: hsph.harvard.edu/student-billing
- ✓ Notify the Office of Financial Aid about any outside awards via email: financialaid@hsph.harvard.edu
- ✓ If you are a loan borrower, complete your required loan documents as soon as possible
- ✓ If you are expecting a credit on your student account to be used for living expenses, you will receive an email from our office prior to Orientation week. If you do not hear from us, feel free to reach out.
- ✓ Review the Harvard Chan Student Budget: hsph.harvard.edu/financial-aid/student-budget



CONTACT INFORMATION

Email: financialaid@hsph.harvard.edu

Phone: 617-432-1867

Location: Kresge G4



CONTACT INFORMATION

Email: registrar@hsph.harvard.edu

Phone: 617-432-1032

Location: Kresge G4

REGISTRAR'S OFFICE

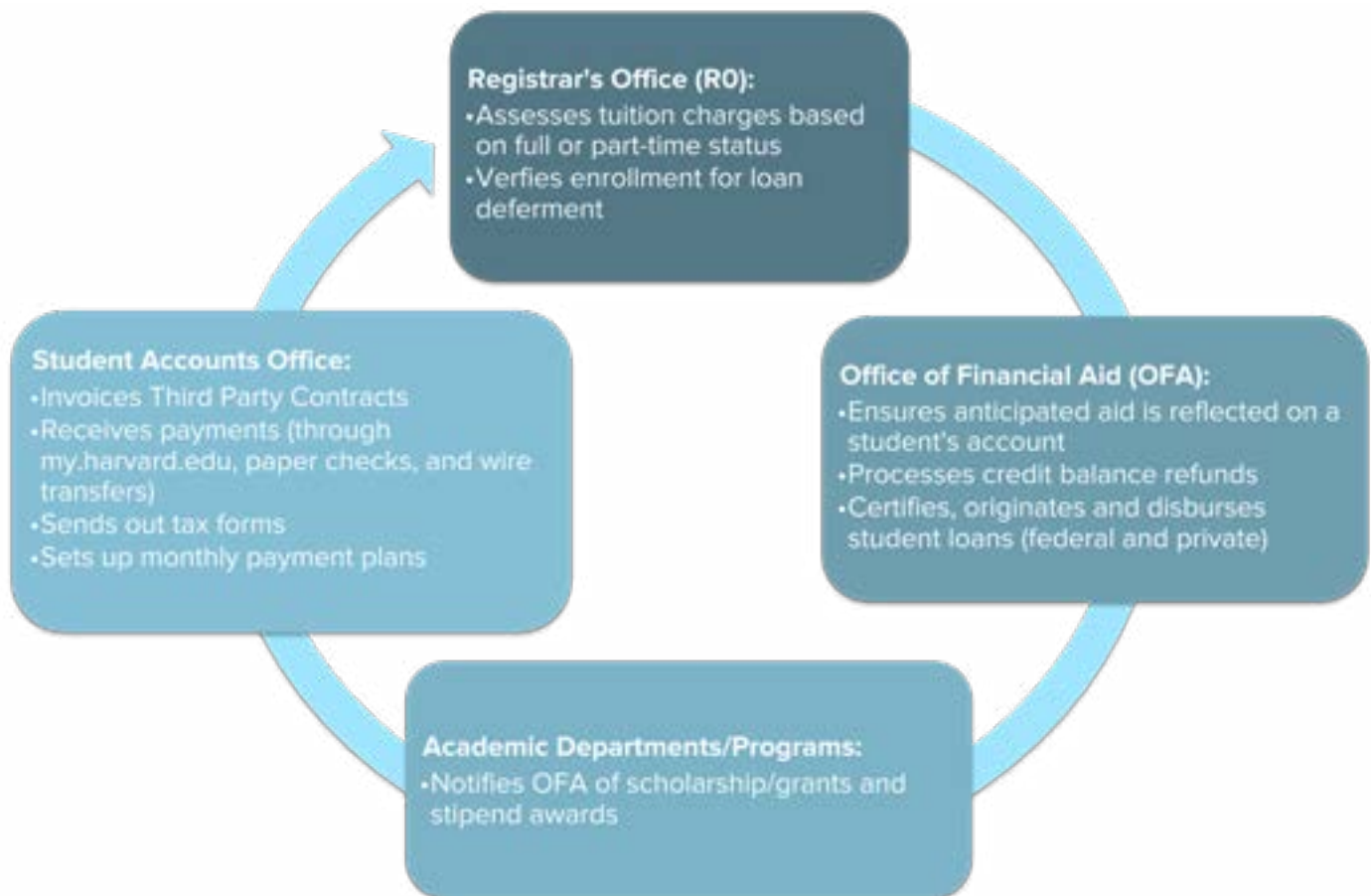
The Registrar's Office supports degree and non-degree students at the Harvard T.H. Chan School of Public Health by:

- Assisting students with course enrollment
- Maintaining students' academic record, including but not limited to program, enrollment, and biographical data
- Managing the grade process
- Implementing deadlines posted on the Schools' Academic Calendar: hsph.harvard.edu/events
- Monitoring students' compliance with school-wide degree requirements
- Certifying student enrollment statuses
- Processing transcript requests
- Assessing students' tuition
- Scheduling classes in coordination with the School's programs and departments
- And more!

All students should review the School's Student Handbook to familiarize themselves with the school-wide policies by which they are expected to adhere and the numerous resources available at the school. This document includes, but is not limited to: registration policies, code of conduct procedures, grading protocols, and more: hsph.harvard.edu/student-handbook.



STUDENT BILLING



The Harvard Chan Registrar's Office, Office of Financial Aid, and academic department/program offices are in the Longwood campus. The Student Accounts Office is in Cambridge.

CONTACT INFORMATION

Email: student_billing@harvard.edu

Phone: 617-495-2739

Location: Smith Campus Center, Room 801 1350 Massachusetts Avenue Cambridge, MA 02138

OFFICE OF DIVERSITY AND INCLUSION

The mission of the Office of Diversity and Inclusion (ODI) is to promote equity, diversity, and inclusion within the Harvard Chan community and beyond. We hope to create a culture which advances both the public's health through learning, discovery, communication, and the mental health and well-being of our community through intentional and meaningful acts of personal growth, compassion and support. The Office is here to serve as a resource for all community members. ODI promotes equity, diversity, inclusion, and belonging within our school and greater community through:

1. Implementing strategies and approaches to foster greater equity and inclusive cultures
2. Engaging with our institutional leaders on key diversity issues and priorities
3. Using empirical data to inform members of our community
4. Promoting inclusive teaching and learning environments
5. Advocating for fairness and equity, creating culturally competent climate, and culturally safe spaces
6. Identifying and sourcing pipeline talent through mentoring, the use of retention strategies, and providing leadership to students, faculty, and staff

In addition, ODI provides advice, guidance, mentoring, outreach, diversity & intercultural learning modules, resources, support services, and programming to the Harvard Chan community. To this end, the Office aims to create an inclusive campus environment for all members of the Harvard Chan community, including students, staff, faculty, postdocs, researchers, and other community members. There are many ways to get involved – whether it is studying and relaxing in the office, becoming an Equity, Diversity, and Inclusion Fellow, joining our diversity committees and working groups, working on specific ODI projects, assisting with pipeline programs or meeting at different events, ODI looks forward to meeting and getting to know you.

Some examples of ODI signature programs are: Self, Social, and Global Awareness; Health Equity and Leadership (HEAL) Conference; Yerby Diversity Lectures; Youth in Public Health Summit; and the Equity, Diversity, and Inclusion Fellowship Program. The Office also co-sponsors numerous events with other Harvard schools, offices, and departments within the Harvard Chan School, student organizations, and other entities, that support programming related to racial justice, gender identity, disability, socioeconomic status, sexual orientation, diversity, inclusion.

In addition to ODI space and programs, the ODI staff members are available to meet with students for consultations, individually or in small groups. If you are experiencing a challenge, or just have a question, please do not hesitate to stop by the office or contact an ODI staff member to schedule an appointment. Additionally, ODI has access to information highlighting resources on campus and in the surrounding Boston area.

ODI is also home to the Equity, Diversity, and Inclusion (EDI) Fellows, a cohort of students who assist with workshop development and programming throughout the year. If you are interested in serving as an EDI Fellow, please contact one of the ODI staff members to learn about the application process.

CONTACT INFORMATION

Website: hsph.harvard.edu/diversity

Location: Kresge G4; **ODI Listserv:** hsph.me/ODI-list

Bias-Related Incident Reporting: hsph.harvard.edu/diversity/bias

COMMUNITY ENGAGEMENT

The Harvard T.H. Chan School of Public Health is located in Boston’s Mission Hill neighborhood, which is approximately one square mile in size and home to almost 16,000 residents¹ – a racially and ethnically diverse mix of youth, long-term residents, college students, and medical professionals. Bordering the town of Brookline and the neighborhoods of Roxbury (which includes Mission Hill), Jamaica Plain, and the Fenway, Mission Hill also receives support from many of the local hospitals in the Longwood Medical Area to address the health needs of the surrounding community.

As current and future public health researchers and practitioners, we seek to embrace our role of social responsibility and support the efforts of our neighborhood’s residents, K-12 schools, community-based organizations, and advocacy groups to improve the quality of life of Mission Hill residents. Courses focused on health disparities, community-based participatory research (CBPR), community health, mixed-methods research, and research translation aid in the development and understanding of the complex issues impacting optimal health in local communities.

Real-world experience within the local community can be gained through your practicum experience, participating in school-sponsored community engagement opportunities, or simply embracing the “gift of proximity” – actively engaging with members of the community, both civically and socially.

During the upcoming academic year, the Office of Diversity and Inclusion will offer workshops to provide community awareness and skill development towards public health practice including engaging community stakeholders to improve health in a community, effectively communicating research material to a non-academic entity, group facilitation skills, and the framing of local public health issues.

For more information on the Mission Hill neighborhood, the City of Boston, and opportunities for community engagement, please visit our webpage: hsph.harvard.edu/diversity

COMMUNITY ENGAGED LEARNING FELLOWSHIPS

For students who have an interest in community-engaged public health practice and research, we encourage you to explore our Rose Service Learning Fellowship and our Mississippi Deltas Fellowship. These two opportunities can be integrated into your educational journey to provide valuable experience in a supportive cohort-based model of learning for community public health practice.

The Rose Service Learning Fellowships will fund rigorous service-learning projects, which are designed to:

- Address community-identified needs, working in partnership with the community and partner organization(s).
- Develop and strengthen reciprocal partnerships between Harvard Chan and the organizations and communities in which the service-learning projects take place.
- Help Fellowship recipients develop community-oriented competencies that will enhance their future work as public health leaders, including a deeper commitment to health equity and social justice, and social responsibility.

For more information on fellowship opportunities, visit hsph.me/rosefellowship and hsph.me/winokurfellowship.

¹ Boston Redevelopment Authority Research Division. American Community Survey 2007–2011 Estimate Mission Hill.

OFFICE OF EDUCATIONAL PROGRAMS

The primary goals of the Office of Educational Programs (OEP) are to deliver student-centered educational programs and provide opportunities for learning that enable graduates to become leaders in public health research and practice. OEP works together with many departments, programs, and offices at the Harvard Chan School, and its activities are core to the School's educational mission.

MASTER OF PUBLIC HEALTH DEGREE

The Master of Public Health degree provides students with the breadth of knowledge, subject-specific expertise, specialized skills, and powerful global network to forge a career in public health. hsph.harvard.edu/office-of-education/master-of-public-health

DOCTOR OF PUBLIC HEALTH DEGREE

Through a combination of academic and experiential learning, this multidisciplinary degree provides advanced education in public health along with mastery of skills in management, leadership, communication, and innovative thinking. hsph.harvard.edu/drph

PRACTICE AND FIELD EXPERIENCES

The field practice experience is central to professional degree programs in public health at both the masters and doctoral levels. hsph.harvard.edu/public-health-practice-resources/for-students

LEADERSHIP DEVELOPMENT

The Interdisciplinary Public Health Leadership Concentration is a theory-based program that enables students to develop a greater understanding of themselves as leaders and learners. hsph.harvard.edu/phl

WRITING RESOURCES

Resources for students and postdoctoral research fellows for academic, scientific, health sciences, ethical, and grant writing are available on the OEP website. hsph.harvard.edu/office-of-education/writingresources

COURSE DEVELOPMENT AND TEACHING RESOURCES

The Office of Educational Programs offers course design support and teaching and learning training for faculty and teaching assistants; oversees the School's student course evaluation process; and provides course materials support, rights and permissions clearance, and distribution.

caseresources.hsph.harvard.edu
hsph.me/oed-teaching-assistants
hsph.me/oed-teaching-support

OFFICE OF CAREER AND PROFESSIONAL DEVELOPMENT

An integral part of pursuing a degree at the Harvard Chan School is professional development and career advancement. In partnership with faculty and program administrators, the Office of Career and Professional Development helps students clarify and reach their professional goals.

Everything you do at the Harvard Chan School will support your professional development. Your classmates, alumni, faculty, and administrators from all over the world will enrich your experience because of the incredible depth of experience they bring to the School. Our team of dedicated professionals will provide you with individualized career development support and resources, and create many opportunities to connect you with alumni and employers.

JOB AND INTERNSHIP RESOURCES

The Office for Career and Professional Development provides individual coaching, small-group support, and programs to help students polish their job search skills and materials. The Career Development Canvas site provides a wide variety of resources for self-reflection, exploring your options, skills building and job seeking. CareerConnect, our online job and career management system, will enable you to identify employment opportunities and potential employers and is your one-stop place to find workshops, coaching appointments and job, practicum and internship listings. In the past year, the office posted hundreds of jobs, fellowships, and internships from early and mid-career to executive placements. The Harvard T.H. Chan School of Public Health Network on LinkedIn is open to students, alumni, and other members of the School community, offering a dynamic professional network and an opportunity to find internships and jobs and to connect with other Harvard Chan affiliates and alumni.

CONNECTING WITH EMPLOYERS

The Office for Career and Professional Development brings more than 100 employers to campus each year to connect with and to recruit students through career expos, information sessions, career-related workshops, and coffee chats. In addition, many practitioners, including alumni, visit the Harvard Chan School to make presentations and attend events, and they are eager to share career advice.

THE POWER OF OUR ALUMNI NETWORK

Harvard Chan School students agree that the connections they make with each other and with alumni are among the most important aspects of the Harvard Chan School experience. The Harvard T.H. Chan School of Public Health Network on LinkedIn is open to students, alumni, and other members of the School community, offering a dynamic professional network and an opportunity to find internships and jobs and to connect with other Harvard Chan affiliates and alumni. LinkedIn is also an excellent tool to search where our alumni are currently working by visiting the 'Alumni' tab through the school's LinkedIn page.

Please log into Career Connect, visit the Career Development Canvas site, read the Career Toolkit, and stay up to date with our programs and events on the Harvard Chan Engage site.

To learn more, visit hsph.harvard.edu/career-services

CONTACT INFORMATION

Email: careers@hsph.harvard.edu

Phone: 617-432-1034; Location: Kresge G4



CONTACT INFORMATION

Email: elizabeth_capuano@harvard.edu

Phone: 617-495-2789

Location: Smith Campus Center, Room 864

HARVARD INTERNATIONAL OFFICE

The Harvard International Office (HIO) staff advises international students and scholars on immigration matters, social and cultural differences, and financial and personal concerns. The office provides orientations throughout the year to help new students, scholars, and their spouses adjust quickly to life in the U.S. and to minimize the difficulties they may experience throughout their stay. You may find their welcome guide a helpful place for information that will help you get settled quickly once you arrive on-campus: hio.harvard.edu/welcome-guide

The office offers various programming throughout the year. For example, the Host Program for International Students provides full-time enrolled students from abroad with the opportunity to get to know a resident in the Boston area who will welcome them and ease their transition to the American way of life. Please check the HIO Orientations website for updated information: hio.harvard.edu/registration-orientation. Students interested in information about how the host program and other programming will be administered for the fall 2021 semester should contact Renee Burke by phone at 617-495-1406 or at renee_burke@harvard.edu.

All newly admitted international students and returning international students enrolled in summer-only programs must register with the HIO before the add/drop deadline. Students should bring their passports, visa stamps, and I-20 or DS-2019 documents with them to complete registration with the HIO. For any questions regarding immigration and visa matters, please contact Elizabeth Capuano at elizabeth_capuano@harvard.edu.

For information about HIO hours, please review the HIO website: hio.harvard.edu/contact-us. Details about Office Hours for Harvard Chan students will be announced in Student News.

SOCIAL SECURITY NUMBERS

To work in the United States you must have a Social Security Number. You may start working without a Social Security Number as long as you provide evidence to your employer that you have applied for one. If you have a Social Security Number you should use it when completing your tax forms. For additional information on Social Security Numbers visit: hio.harvard.edu/social-security-numbers

OPENING A BANK ACCOUNT

The HIO has some information about opening a bank account on their website here: hio.harvard.edu/bank-accounts-and-credit-cards

Please note that you usually are not able to get a credit card without a Social Security Number. However, if you open an account at the Harvard University Employee's Credit Union, on the first floor of Kresge, you should be eligible for a credit card with limited credit, even if you do not have a Social Security Number.

Support Services



DISABILITY ACCOMMODATIONS

The Harvard T.H. Chan School of Public Health is dedicated to providing students with appropriate support and services to ensure that they have an accessible and welcoming learning environment. The School's services for students with disabilities, located in the Office for Student Affairs, complies with the Americans with Disabilities Act of 1990 (as amended in 2008) and Section 504 of the Rehabilitation Act of 1973 in providing services to students with disabilities.

The School determines reasonable accommodations on an individual, case-by-case basis. Students are required to submit current clinical documentation by an appropriate medical care professional and must include the student's name, a diagnosis, and detail the functional limitations caused by the diagnosis. This documentation should also outline the treating medical professional's recommended accommodations. Additional documentation may be requested as needed. Please note that obtaining documentation from a medical professional can take time and, therefore, students should plan accordingly. Last-minute submission of documentation may result in delays in accommodations.

Please note that the Harvard T.H. Chan School of Public Health works to maintain privacy; however, information on functional limitations and accommodations may be shared internally on a need-to-know basis. This material is released to a third party consistent with state and federal law.

For more information, please visit the Office for Student Affairs Disability Services website: hsph.harvard.edu/student-affairs/disability-services/. Please also feel free to contact the Office for Student Affairs at 617-432-1542 or email studentaffairs@hsph.harvard.edu.

GRADUATE STUDENT LEARNING SUPPORT (GSLs)

Students may find themselves challenged by some of the academic demands of graduate school. Graduate Student Learning Support (GSLs) is a program designed to assist students who are struggling with academic and learning issues and for whom content-based tutoring is not quite enough.

These issues can include challenges with time management, difficulty in absorbing new material, completing academic work, or understanding reading materials; anxiety about quantitative skills, writing, or test taking; and reluctance to speak in class. Through strategic intervention, GSLs is designed to help students overcome academic hurdles before they become insurmountable. GSLs provides graduate students with the opportunity to meet individually with a professional for consultation and that consultation may result in:

- Assignment to a learning specialist who will help the student improve study skills or learning strategies and limited on-site psychological assessments
- Referral for a neuropsychological assessment or evaluation and follow up consultation
- Potential accommodations through the OSA's disability coordinator (with proper documentation)

Students who may benefit from these services can be referred by the Office for Student Affairs: studentaffairs@hsph.harvard.edu or call 617-432-1542.

CONTENT-BASED TUTORING

Students experiencing difficulty in a course should consult with the instructor and/or teaching assistant in that course and should make full use of the resources available, including labs, teaching assistant sessions and office hours, instructor office hours, and scheduled remedial sessions. Students considered by the instructor to be in academic difficulty in a course required for graduation may be able to arrange for a tutor.

The Office for Student Affairs can help support tutoring needs for students experiencing academic difficulty or challenges. This tutoring support is most often provided for core courses, but students should not hesitate to contact Student Affairs at 617-432-1542 or email studentaffairs@hsph.harvard.edu about any academic issue in any course.



GLOBAL SUPPORT SERVICES

Harvard Global Support Services (GSS) provides students, faculty, and staff with resources related to safety and security, health, culture, outbound immigration, employment, financial and legal matters, and research center operations. GSS is a full-service team committed to minimizing risk and managing complexity, so you can feel confident about your international travel and activities. Before traveling internationally, register your trip with GSS so that they can locate and contact you if an incident occurs and provide help, if needed. GSS also provides a 24/7 global emergency response program, which includes access to medical, mental health, and security assistance and evacuation services while traveling for University business and University-related activities. Learn more about how GSS can help you: globalsupport.harvard.edu.

CONTACT INFORMATION

Longwood Medical Area Clinic

Phone: 617-432-1370

Location: Vanderbilt Hall, 275 Longwood Avenue, Boston, MA 02115

Hours: Monday - Friday: 9:00 AM–5:00 PM

HARVARD UNIVERSITY HEALTH SERVICES

Harvard University Health Services (HUHS) provides comprehensive, confidential health care to students, staff, faculty, and their dependents. HUHS has four locations across the Harvard campuses. The main location is in Smith Campus Center in Harvard Square, with satellite clinics on the Longwood Medical Area, and Law School campuses. Visit huhs.harvard.edu for more detailed information.

MEDICAL EMERGENCIES

If you experience a life-threatening emergency, call 911.

For those with HUHS Student Insurance - call 617-495-5711 for after-hours urgent care clinic and ask for the Longwood Medical Area physician on call.

For those without HUHS Student Insurance - Beth Israel Deaconess at 330 Brookline Avenue in Boston for adults and Children's Hospital at 300 Longwood Avenue in Boston.

URGENT CARE

Care for non-routine, urgent medical concerns or symptoms is available 24/7. Students can schedule same-day, non-routine medical appointments and initial phone assessments for Counseling and Mental Health Services (CAMHS) online through the Patient Portal: huhs.harvard.edu/patient-portal. Whenever possible, students are encouraged to call first to obtain advice from their health care team or mental health provider. Urgent Care is available in the Smith Campus Center Clinic at 75 Mount Auburn Street on the third floor 24/7.

COUNSELING AND MENTAL HEALTH SERVICES

Students receive comprehensive outpatient care for a variety of concerns, including anxiety, depression, stress, crisis management, transitional issues, grief, and eating, sexual, or relationship concerns. Based on a students' needs, clinicians offer:

- Individual counseling
- Group counseling
- Medication evaluation and management
- Evaluation for full or partial hospitalizations

Students who are new patients in the CAMHS department can request a 20-minute phone consultation or by logging in to the Patient Portal. Counseling and Mental Health Services is available at all HUHS locations.

The CAMHS Cares line 617-495-2042 is a 24/7 support line for Harvard students who have mental health concerns, whether they are in immediate distress or not, on-campus or elsewhere.



CENTER FOR WELLNESS

Based in Cambridge, the Center for Wellness is a University-wide resource that is focused on promoting the lifelong health and wellbeing of those in the Harvard community. Their approach focuses on mind/body wellness. The Center for Wellness offers classes and workshops, individual appointments for massage and acupuncture, and collaborates with a number of student groups and other offices around the University in health promotion and education. For more information visit wellness.huhs.harvard.edu.

CONTACT INFORMATION

Phone: 617-432-4041

Location: 164 Longwood Avenue, 1st Floor

Website: hms.harvard.edu/ombuds (includes self-help resources)

OMBUDS

The Ombudsperson for HMS/HSDM/Harvard T.H. Chan School of Public Health provides impartial assistance to students, faculty, staff and trainees and appointees at the affiliated institutions whose concerns are affecting their work or studies. The Ombuds Office offers a highly confidential, independent, and informal forum in which to help visitors to clarify their concerns, identify their goals and consider all of their options in managing or resolving their situations. The Ombudsperson does not serve as an advocate for any party to a dispute. However, an Ombudsperson does advocate for fair treatment and processes. The Ombudsperson provides coaching in written and verbal communications, informal mediation, meeting facilitation, shuttle diplomacy, upward feedback, and information about policies/procedures and resources. Some typical concerns brought to the Ombuds Office include work/academic environment and performance, research-related concerns, harassment and discrimination, illness and disability and policies and requirements.

Any issue may be brought to the Ombudsperson.



SEXUAL HARASSMENT AND OTHER SEXUAL MISCONDUCT

TALK TO SOMEONE

If you have a concern about something that may have happened to you, or that you may have observed or heard about in the community, you are encouraged to share your concern with your local Title IX Resource Coordinator. Title IX Resource Coordinators have specialized experience in responding to disclosures of sexual harassment and other sexual misconduct. They serve in a neutral role, support all members of the Harvard community, and are expert resources around the University's policies, procedures, and resources in the realm of sexual harassment and other sexual misconduct.

Title IX Resource Coordinators can:

- Provide information about available resources
- Help arrange supportive measures — individualized supports that enable members of the Harvard community who are impacted by sexual harassment or other sexual misconduct to continue with their studies and work and to participate in campus life
- Facilitate informal resolution, as appropriate, between the involved parties, with a goal of memorializing a mutually acceptable resolution in writing
- Provide information on the University policies and procedures, as well as any additional School or unit policies, pertaining to sexual harassment and other sexual misconduct
- Provide information about the formal complaint process

While conversations with Title IX Resource Coordinators are not confidential, they will handle any information that you provide with the utmost discretion and sensitivity and will share it with others only on a need-to-know basis. For example, Title IX Resource Coordinators may need to share some information in order to implement supportive measures. You are encouraged to ask about confidentiality and privilege at the start of your conversation with any of Harvard's resources. To learn more about confidentiality, visit oge.harvard.edu/confidentiality-nutshell.

DISCLOSE ANONYMOUSLY

You may submit anonymous disclosures of sexual harassment or other sexual misconduct to the Office for Gender Equity (OGE) by using the Resource for Online Anonymous Disclosures (ROAD). Through the ROAD, you can disclose your concern, communicate with a member of OGE, and access resources without revealing your identity. To use learn more about the ROAD, visit oge.harvard.edu/disclose.

CONTACT INFORMATION

Maritza Hernandez
Harvard T.H. Chan School of Public Health
Title IX Resource Coordinator for Students
Phone: 617-432-4703
Email: mhernandez@hsph.harvard.edu

Luke Sutherland
Harvard T.H. Chan School of Public Health
Title IX Resource Coordinator for Students
Phone: 617-432-5290
Email: sutherland@hsph.harvard.edu

CONTACT INFORMATION

To learn more about the resources and options available to you, please contact the Office for Gender Equity at:

Smith Campus Center, Suite 901
1350 Massachusetts Avenue
Cambridge, MA 02138
Phone: (617) 496-0200
Email: oge@harvard.edu

To file a formal complaint, please submit your complaint in writing to the University Title IX Coordinator at oge@harvard.edu. For more information regarding filing a formal complaint, visit oge.harvard.edu/file-complaint.

CONFIDENTIAL AND CRISIS SUPPORTS

Sexual Harassment/Assault Resources & Education (SHARE) Counselors provide a range of confidential and privileged services to support individual and community healing from harm, as well as prevention education initiatives designed for Harvard students, faculty, staff, and post-doctoral students. Examples of confidential services provided by SHARE Counselors include:

- Crisis response and support to individuals impacted by harm, including interpersonal violence and abuse, including sexual harassment, sexual assault, dating violence, and stalking
- Short-term counseling
- 24-hour confidential crisis hotline (617) 495-9100 (note: this line connects to BARCC during the summer)
- Psychoeducational support groups
- Restorative practices and education for individuals who have caused harm

You may contact a SHARE Counselor at:

SHARE
Smith Campus Center, Suite 624
Cambridge, MA 02138
Phone: 617-496-5636
24/7 confidential crisis hotline: 617-495-9100
Email: oge_share@harvard.edu
Website: oge.harvard.edu/share

SHARE staff assures that all information provided to SHARE Counselors are treated confidentially and protected to the fullest extent permissible by law. Conversations with SHARE clinicians, acting in their professional capacity as licensed clinical social workers, are privileged under the law, meaning that licensed clinical social workers are prohibited from disclosing what you have shared with them, even in a legal proceeding, unless you give them permission. You are encouraged to ask about confidentiality and privilege at the start of your conversation with any of Harvard's resources. To learn more about confidentiality, visit oge.harvard.edu/confidentiality-nutshell.

HARVARD IMMIGRATION AND REFUGEE CLINICAL PROGRAM

The Harvard Immigration and Refugee Clinical Program (HIRC) offers free legal and social service support and representation to undocumented and DACAmented students. HIRC recognizes that students may have concerns about immigration policies, priorities, procedures, falling out of status, and mapping out future potential immigration remedies. They provide legal and social work consultations to address these concerns and others that immigrants face. HIRC staff attorney, Jason Corral, is offering legal consultation and representation to students and is happy to answer questions. Additionally, HIRC offers consultations with Liala Buoniconti, clinical social worker, who can assist students with a variety of concerns including stress management, family issues, and concrete resources. Jason and Liala are available by appointment.



CONTACT INFORMATION

Email: nmaldonado@law.harvard.edu

Office Phone: 617-495-6648

Emergency Cell Phone: +1-857-242-6755 (for time-sensitive matters, will be directed to the HIRC attorney on-call)

Website: harvardimmigrationclinic.org

SAFETY AND SECURITY

HARVARD UNIVERSITY POLICE BUSINESS (617-432-1215)

Every major city has areas that have higher crime rates than others. There are safety precautions that can be taken to maintain a safer city lifestyle. The university document *Playing it Safe*, available from the Harvard University Police Department, contains important information on crime prevention programs and services at Harvard. It also outlines federal and state laws and university policies on sexual offenses (including rape, date rape, sexual assault, sexual harassment, and other sexual offenses). For more information, please call Harvard University Police business number (617-432-1215). In a life safety emergency, please call 9-1-1.

HARVARD UNIVERSITY POLICE EMERGENCY (617-432-1212)

The Longwood Area police are stationed at 90 Smith Street. Officers are available to give assistance 24 hours a day.

SECURITY (617-432-1040, 24 HOURS A DAY)

Security guards are posted at all Harvard Longwood area building entrances. Guards will ask you to stop and show your ID. Security staff are located in the FXB building.

MESSAGEME: EMERGENCY NOTIFICATION SYSTEM

MessageMe allows the University to quickly distribute critical information to you, wherever you are located, during an emergency. MessageMe helps you to stay informed in the event of an emergency by sending alerts to your personal electronic device through text messaging, voice and/or email. Please enroll in the MessageMe Program at messagememe.harvard.edu.

TAXI ESCORT SERVICE

The taxi escort service is available to SPH students on a first come, first serve basis. The hours of operation are 9:00 pm to 3:00 am seven days a week. Those eligible to use the service must have a current, valid Harvard University ID for the Harvard T.H. Chan School of Public Health. The taxi escort is arranged through the security officer stationed at the FXB Security Desk at 651 Huntington Avenue upon presentation of a current, valid ID. Security will distribute a taxi voucher and coordinate taxi pick-up. The taxi service is free within a one mile radius of the campus. Should your destination go beyond the one mile radius of the campus, the taxi meter will be turned on and you will be responsible for the additional fare beyond the one mile radius. Each taxi will only go to one destination with up to four riders. Multiple riders going to different destinations will require separate taxis and vouchers. Traffic and weather conditions may affect the timeliness of the taxi service.

WALKING ESCORT SERVICE

The Harvard Longwood Campus has a walking escort service available 24 hours a day. On request, the security officer will escort faculty, staff, or students to any of the Longwood Campus Area parking lots, buildings, or local "T" stops. To use this service, call 617-432-1379. Please call ahead as it may take as long as fifteen minutes for your escort to arrive. Please wait for your escort once you have called.

Student

Life



HARVARD CHAN STUDENT ASSOCIATION

The Harvard T.H. Chan School of Public Health Student Association (HCSA) is a centralized student organization that acts on behalf of all students in matters concerning their education and welfare. HCSA works with the faculty and administration on school-wide issues, sponsors seminars, and other education-related events, and plans social activities. HCSA members are elected representatives and coordinators that meet regularly to discuss issues and plan activities related to student life.

In the past, HCSA has worked on issues of academic affairs, including on course requirements, improvements to course evaluations, and cross-registration. HCSA has also worked on issues of advocacy including social justice, campus activism, disability, mental health, and international student needs. HCSA holds many social events throughout the year to foster a sense of community and create a place to take a break from work, including our annual showcase of our international student talents at I-Night.



View current HCSA officers and representatives at hsph.harvard.edu/student-association/your-representatives/.

CONTACT INFORMATION

Email: hcsa@hsph.harvard.edu

Website: hsph.harvard.edu/student-association

Harvard Chan Engage: engage.sph.harvard.edu/organization/hcsa

Follow us on Facebook: facebook.com/HarvardChanSA

STUDENT ORGANIZATIONS

Student organizations are a vital part of the Harvard T.H. Chan School of Public Health and greatly enhance the cultural, social, and intellectual life on campus. Discover and explore our student organizations with Harvard Chan Engage at engage.sph.harvard.edu. In the 2020-2021 academic year there were over 30 registered student organizations on campus. The Office for Student Affairs advises student organizations on program planning and provides general assistance and support. Students may register or re-register a student organization during the fall and spring semester. Information about this process can be found at: hsph.me/studentorgs.



STUDENT EMPLOYMENT

THE HARVARD STUDENT EMPLOYMENT OFFICE (SEO) works with faculty, the community, and all University departments to create term-time and summer employment opportunities for students. The SEO is a resource for job-seeking students and hosts an online jobs database accessible to enrolled Harvard graduate and undergraduate students. seo.harvard.edu

HARVARD CHAN CAREERCONNECT: hsph-harvard-csm.symplcity.com lists mostly full-time job opportunities but sometimes includes listings for part-time or temporary positions (most positions are not on-campus)

RESEARCH ASSISTANT POSITIONS: can typically be found through informal networks and contacts in academic departments.

HARVARD JOB OPPORTUNITIES: hr.harvard.edu/jobs
Harvard's open staff positions are posted through ASPIRE where job applicants can view job opportunities, set up a personal profile, and apply for jobs online.

TEACHING ASSISTANT POSITIONS: each department and program manages the hiring of teaching assistants independently. Please refer to the department and program directory for contact information.



FAMILY AND CHILDCARE

HARVARD STUDENTS ASSOCIATION SPOUSES AND PARTNERS ASSOCIATION (HSSPA): HSSPA is an entirely volunteer-run organization open to the spouses and partners of all Harvard students, post-docs, visiting fellows and other affiliates. HSSPA provides a way for its members to make friends, find intellectual stimulation, and feel a sense of belonging within the University. Through HSSPA you will find support networks, events, and resources to help you with your stay in Boston. Partners and spouses of Harvard Chan students are welcome and encouraged to participate in all student group events and activities. hsspa.harvard.edu

CHILDCARE: Due to strict state regulations that are designed to ensure both quality and safety, affordable child care can be in short supply in the greater Boston area, depending on the age of your child. Increase your odds for securing the type of child care that works best for your family by starting early and keeping your options open. Below are some options for childcare in the Longwood Medical Area and on Harvard University campuses as well as in the Boston/Cambridge area:

- Six nonprofit, independent child care centers are located on the Harvard University campus – five on the Cambridge campus and one in Allston near Harvard Business School. Each center is independent, and makes its own decisions regarding enrollment and curriculum. hr.harvard.edu/finding-child-care
- The Office of Work/Life on Harvard University Longwood Campus provides information and referrals on self care, child care, adult care and elder care. hlc.harvard.edu/home/worklife/homeandfamily
- The Longwood Medical Area Child Care Center and Bright Horizons Family Center at Landmark Center are both located in the Longwood Medical Area. masco.org/working/child-care-resources
- To get a list of licensed family day care providers and group child care centers in your community, visit the Massachusetts Department of Early Education and Care. mass.gov/early-education-and-child-care-programs-and-agencies
- You may also use the Watch Portal watch.harvard.edu to find Harvard students interested in babysitting and childcare opportunities.

PREGNANT OR BREASTFEEDING: The Longwood Campus Lactation Rooms (more information at hlc.harvard.edu/lactation-rooms) are private, comfortable spaces available to use for breastfeeding or expressing breast milk. The rooms are equipped with Medela “Lactina Select” pumps. We also provide information about using the pumps, where to purchase your necessary personal accessories, books and pamphlets about breastfeeding, and contact numbers for professional lactation consultants who can provide problem solving and education.

HARVARD CHAPLAINS

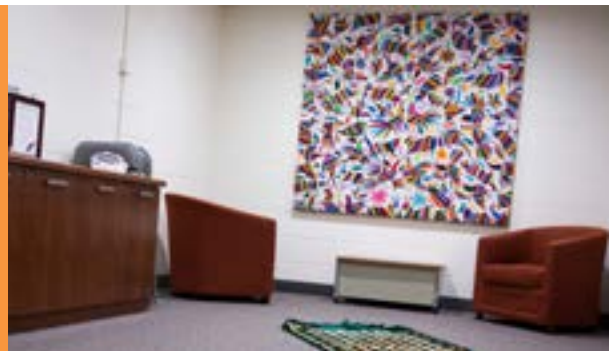
The Harvard Chaplains, a professional community of more than 30 chaplains, represent many of the world's religious, spiritual, and ethical traditions and share a collective commitment to serving the spiritual needs of the students, faculty, and staff of Harvard University.

For a list of religious centers at Harvard, Longwood Medical Area, Brookline and Cambridge, visit chaplains.harvard.edu.

You may also email the Harvard Chaplains at chaplains@harvard.edu or call 617-495-5529.

HARVARD T. H. CHAN REFLECTION ROOM

The reflection room is a multi-functional quiet space for anyone who wish to pray, meditate or reflect. It is located in Kresge LL14 and an adjacent Wudu Area is in Kresge LL08.



COUNTWAY LIBRARY

Students have access to a broad array of resources through the Countway Library of Medicine and other Harvard University Libraries. The Countway offers students all the amenities of a state-of-the art health sciences library. Its extensive medical collections are complemented by the extraordinary collection of rare books and special materials held in the Center for the History of Medicine.

Countway Library Harvard Chan Liaisons are a specialized group of librarians from specialized library departments, including Access Services, Research & Instruction, Publishing and Data Services, and the Center for the History of Medicine. Liaisons support Harvard Chan School students in research projects through publication, as well as in course assignments, theses and dissertations, and with custom instruction and consultation.

Please check the Countway website for updated hours of operation: countway.harvard.edu. For a list of Harvard libraries, with opening times and other information, visit library.harvard.edu/libraries.



The Countway Library website provides a gateway to Countway's programs, events, expertise, and services: countway.harvard.edu. This includes remote access to digital resources, borrowing, interlibrary loan, physical access to library resources, and contact information for consultation with reference librarians. The website lists classes and tutorials covering a variety of information resources. Use the Ask Countway form to request services and materials: countway.harvard.edu/ask-countway. Visit the Countway News page to learn about updates to the library space and resources, the Countway café, special events and much more: countway.harvard.edu/news

THE COUNTWAY GARDEN

The Countway Community Garden is now open dawn to dusk to HUID holders, no code is needed to enter through the gate. For events held in the garden, contact Countway Library's Outreach department. Please visit the library website for more information on the Countway Community Garden.

RESEARCH ASSISTANCE

To request a consultation with a Chan School Liaison Librarian, use the "Ask Countway" link on the Countway website and choose Research & Instruction under the Routing field: countway.harvard.edu/ask-countway

Countway's Harvard Chan School Liaisons are information professionals with subject specialty in Public Health research, historical resources, and publication and data management. They are available for one-on-one and small groups consultation, as well as custom instruction. Schedule your consultation early on to utilize expert support in your projects and assignments: countway.harvard.edu/services/countway-harvard-chan-school-liaisons.

LIBRARY MATERIALS

Library Materials can be retrieved through several different options. Visit the Countway Library website to learn how to find materials and access resources.

Learn about our Borrow Direct, Interlibrary Loan, Course Reserves, and how to submit a purchase request for an item or resource you want us to have. Interlibrary loan can be used to obtain materials from another Harvard Library or from outside the Harvard Library system. We may not own everything but we can probably get it for you.

ARCHIVES AND RECORDS MANAGEMENT

The Archives and Records Management Program (ARM) at the Center for the History of Medicine can assist you in determining what records are important to keep, for how long, and where and how to store them. ARM offers records management help and advice specific to the Harvard Chan School. Visit the General Record Schedule website at grs.harvard.edu, contact arm@hms.harvard.edu or call 617-432-6194 for more information on storing your records, maintaining compliance with University records retention policies, destroying records and more.

ARCHIVES OF THE HARVARD CHAN SCHOOL

In 2014, the Harvard Chan School partnered with the Center for the History of Medicine to fund a full-time archivist dedicated exclusively to identifying and collecting public health collections. This unique partnership has resulted in an expanding number of collections related specifically to the school.

FACILITIES

SEBASTIAN'S CAFÉ

Dining facilities and food services at the Harvard T.H. Chan School of Public Health are provided by Harvard University Dining Services. Sebastian's Café is located on the first floor of the Kresge Building and is open Monday through Friday 8:00 AM to 4:00 PM. Their daily rotation of items includes deli station, hot entrees, pizza, soups & chilis, world cuisines, salad bar, grab n' go yogurt & fruits, hot breakfast and more. Sebastian's also supports the University's sustainability goals, and was the first Harvard location to be Green Restaurant Certified. Among their initiatives are the use of fully compostable corn-based disposables, re-usable mug and water bottle incentives, green cleaning products, and more. All food, plates, cups, straws, napkins, and utensils from Sebastian's Café are 100% compostable. For more information and their daily menu visit: dining.harvard.edu/campus-dining/cafes/locations/sebastians

SHOWERS AT HARVARD T.H. CHAN SCHOOL OF PUBLIC HEALTH

- Building 1: 2nd floor, 6th floor, 11th floor (all gender)
- Building 2: Ground (W); Basement, 1st, 2nd, 3rd floors (all gender)
- Kresge: 9th floor (M)
- Smith Street: 1st and 4th floors (all gender)

SHOWERS AT HARVARD MEDICAL SCHOOL

- Armenise: 432, 532, 632 (all gender)
- C-Building: 217B (M), 313B (W)
- Goldenson: 200T2, 300T2, 400T2 (all gender)
- TMEC: 149 (M), 151 (W)
- Warren Alpert: 1C5, 2C5, 3C5, 4C5, 5C5 (all gender)

SHOWERS AT THE LANDMARK CENTER

The Landmark Center has shower facilities on the P1 level; however, you must register for access in the Landmark Center Management office on the 2nd floor.

VANDERBILT ATHLETIC FACILITY

The Vanderbilt Hall Athletic Facility, located at 107 Avenue Louis Pasteur, is free to all Harvard University degree seeking students with your HUID. Vanderbilt offers group fitness classes, cardiovascular equipment, weight rooms, access to a personal trainer and sports specific training. Their recreation opportunities include basketball courts, intramural programs, outdoor tennis courts and a bouldering room. For more information about the facility or programs visit: hms.harvard.edu/departments/vanderbilt-hall/vanderbilt-hall-athletic-facility or contact athletic_vanderbilt_hall@hms.harvard.edu

HARVARD RECREATION

All degree seeking students at the Harvard T.H. Chan School of Public Health have free access to the Harvard recreational facilities in Cambridge with your HUID. Facilities include cardiovascular equipment, weight rooms, swimming pool, tennis courts and group fitness classes. For additional information and hours visit: recreation.gocrimson.com



SUSTAINABILITY

ECOOPPORTUNITY TEAM

EcoOpportunity is a group of faculty, staff and students who are dedicated to institutionalizing sustainability practices on the Harvard Longwood campus. This group works to inspire the SPH community to reduce environmental and health impacts, to identify and prioritize resource conservation opportunities on campus, and to establish best practices for sustainable design and operations on campus. EcoOpportunity hosts monthly meetings, initiatives, campaigns, and events throughout the year, and has various subcommittees you can get involved in, such as Labs, Bikes, Waste Reduction, and Events.

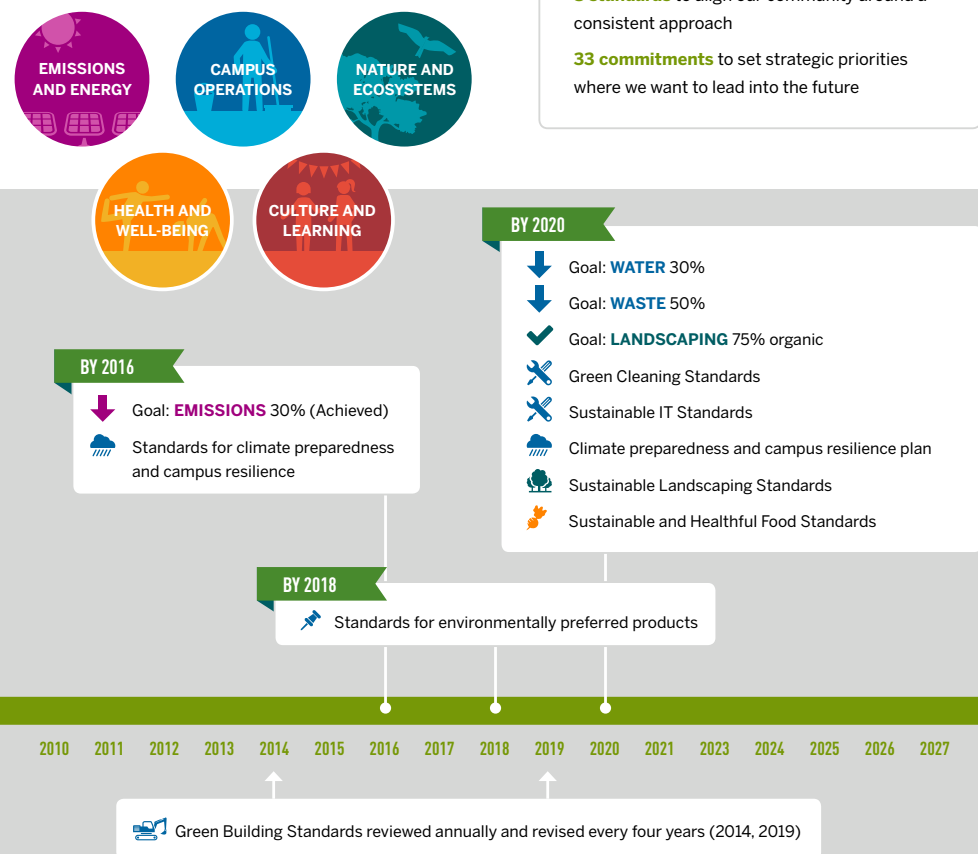
To learn more or to join EcoOpportunity, email ecoop@hsph.harvard.edu.

HARVARD UNIVERSITY SUSTAINABILITY PLAN

Enhancing our collective well-being for a better future.

The Harvard Sustainability Plan, adopted in 2014, was developed by the Office for Sustainability in partnership with students, faculty, and staff to align the University around a holistic vision and a five-year roadmap for building and operating a more sustainable campus.

In 2018, the University set new climate action goals to be fossil fuel-free by 2050 and fossil fuel-neutral by 2026. These goals build on our past progress of reducing net greenhouse gas emissions 30% from 2006–2016.



The Plan sets clear priorities for moving forward:

- 4 goals** with a specific target and timeframe
- 8 standards** to align our community around a consistent approach
- 33 commitments** to set strategic priorities where we want to lead into the future

Sustainability is vital to the improvement of public health. Almost every action we take in our daily lives has a health impact on others from our contributions to local landfills to our contributions to global climate change.

As a public health community, we encourage students to act sustainably in their daily actions at Harvard Chan.

Here are 3 ways to get started:

- 1. Separate your waste**
Diverting waste from landfills can reduce the amount of greenhouse gases that are created in landfills and contribute to climate change.
- 2. Bring your own water bottle to class**
Water bottle refilling stations are located in multiple places around Harvard Chan, and a reusable water bottle can cut back on harmful single-use plastic wastes.
- 3. Turn off lights when last to leave a room**
Directly reduce carbon emissions and air pollution from Harvard's electricity generating facilities by using less electricity

HARVARD UNIVERSITY ID CARD

Harvard University has a University wide photo ID card system. This card (HUID) is necessary in order to enter any Harvard University facility.

If you are a new incoming Harvard student you will use the Harvard University's ID Card Photo Submission Application which can be found at: campusservicecenter.harvard.edu/photo-submission

If you have a current or previous affiliation (i.e. student, employee) with Harvard that required you to have a photo taken, you are not eligible to use this application.

If a suitable photo is successfully submitted and approved by your school's deadline, your ID card will be printed and waiting for you when you arrive on campus. The Harvard University ID card provides access to housing, dining halls, libraries, athletics, Crimson Cash, and more.

To submit your photo, please follow the instructions at:
campusservicecenter.harvard.edu/services/id-cards/how-obtain-id-card

Please treat your ID as you would your credit cards or other valuable cards. If lost, promptly file a "Lost or Damaged" ID card form. These can be picked up at the ID office or filled out online at: huid.harvard.edu under forms and brought to the ID office. There is a charge of \$25.00 for a lost student photo ID card. Students reporting a lost card after the closing date of their final term bill must pay by cash or check.

CONTACT INFORMATION

Email: idoffice@hsph.harvard.edu

Phone: 617-432-0389

Location: Kresge 119

HARVARD UNIVERSITY ID BENEFITS

- Free transportation on MASCO shuttles with HUID
- Borrow resources from Harvard University Library
- Access to Vanderbilt Hall Athletic Facility located at 107 Avenue Louis Pasteur and Harvard Recreation Facilities in Cambridge (free access for degree seeking students only)
- Outings and Innings: outingsandinings.harvard.edu for discount tickets for local events, performances and more
- Free admission to all Harvard museums
- Free admission to the Museum of Fine Arts, Institute of Contemporary Art, Isabella Stewart Gardner Museum
- 20% discount (for degree seeking students only) when purchasing food at Sebastian's Café, when using Crimson Cash

CONTACT INFORMATION

Email: id_services@harvard.edu

Phone: 617-496-7827

Location: ID Services 8th Floor Smith Center

1350 Massachusetts Avenue

Cambridge, MA 02138

HUID FOR SPOUSES AND PARTNERS

As the spouse or partner of a degree-seeking Harvard student/scholar without other university affiliation, you are not eligible for a regular university ID or library card. You can, however, get a Special Borrower Card for the Harvard College Library system for a small fee. This will allow you to use most of the university libraries, to borrow books and other materials (with some restrictions), and in some cases to gain free entrance to Harvard museums.

In addition, you can store Crimson Cash (Harvard's "electronic money") on your card and use it as an ID to enter the Smith Center tower and other restricted Harvard buildings, as well as on the Harvard shuttle buses. To get a Special Borrower Card, you must first visit the Library Privileges Office to the left of the entrance of Widener Library in Harvard Yard. You will need a photocopy of your spouse's Harvard ID (or bring your spouse and their ID with you), and you may be asked for proof of marriage if you have different last names.

After filling in the application and having your photograph taken at the library, you will need to go to the ID services office at Smith Center to pick up your card.

CRIMSON CASH

Harvard's Crimson Cash program is a no-cost, convenient way to use your Harvard ID to pay for copiers and printers at the School, and at Sebastian's Café. Additional retail locations which accept Crimson Cash can be found at cash.harvard.edu.

Your Crimson Cash account is automatically activated when you receive your Harvard ID. Your Crimson Cash account number is the CC 16-digit code which can be found on the back of your Harvard ID. To add value, visit cash.harvard.edu. The Crimson Cash website is mobile friendly and is the key to managing your account and learning more about the program.

To use Crimson Cash, swipe the thin stripe on the back of your Harvard ID when paying. If you have questions, email Crimson_Cash@harvard.edu or call (617) 496-6600.



HARVARD UNIVERSITY EMPLOYEES CREDIT UNION

Harvard University Employees Credit Union (HUECU) is a not-for-profit financial institution founded by employees for the whole Harvard community, including Harvard teaching hospitals.

Harvard T.H. Chan School students and their families, including international students, are eligible for HUECU benefits. Membership lasts a lifetime; just like your Harvard degree, and your money will always be easily accessible.

Stop by today and learn more about how HUECU savings accounts, credit cards, student loans and financial education programs can help you reach your financial goals.

CONTACT INFORMATION

Location: 104 Mount Auburn Street, Cambridge, MA 02138

Monday-Friday from 9:00 AM to 4:00 PM

Website: HUECU.org

CONTACT INFORMATION

Email: helpdesk@hsph.harvard.edu

Phone: 617-432-HELP (4357)

Location: Kresge LL15 or Landmark Center 3rd Floor East

Monday-Friday from 7:30 AM to 6:00 PM

DEPARTMENT OF INFORMATION TECHNOLOGY - STUDENT COMPUTING

The Department of Information Technology staff welcome you to the Harvard T.H. Chan School of Public Health! We know getting started is exciting but can be overwhelming, so we are here to help. For assistance with hardware, computer accounts, email, network support, printing, software, or computer issues, please contact us via email or phone Monday-Friday 7:30am-6pm.

For assistance with hardware, computer accounts, email, network support, printing and lab software or computer issues, please contact the Helpdesk using the information above.

STUDENT GUIDE

We have created a comprehensive guide full of important information on accessing the resources available to you: hsph.harvard.edu/information-technology/student-guide. If you have any questions or issues, contact us at the above phone number or email address.

HARVARDKEY LOGIN

HarvardKey is Harvard University's unified credential for accessing a wealth of University applications and services with a single, convenient login name and password. In addition to enabling access to the Harvard applications and services you use every day, HarvardKey also offers an easy-to-use self-service portal for managing your account, including changing your password and updating your recovery information in case you forget your login details. You will use your HarvardKey credentials to access Harvard WiFi, VDI, as well as online applications such as Canvas and My.Harvard.

HarvardKey now requires two-step verification to keep you even more secure. To set up two-step verification, please follow the instructions at: huit.harvard.edu/twostep

STUDENT EMAIL ADDRESSES

Harvard University uses Microsoft Office365 as our email solution. Your Harvard email account can be accessed using your HarvardKey credentials at: outlook.com/harvard.edu. All students are required to have a Harvard email address and check it on a regular basis as important information from the School is disseminated to this email.

LAPTOP REQUIREMENT POLICY

The School has a laptop requirement for all students. More details about this can be found at: hsph.harvard.edu/registrar/laptop-requirement-policy. Students may be able to borrow a temporary laptop; please contact Student Affairs at studentaffairs@hsph.harvard.edu to request more details.

VIRTUAL DESKTOP INFRASTRUCTURE

The Virtual Desktop Infrastructure (VDI) is available for student use. VDI allows students to log in to a virtual computer lab desktop to access the below software from any internet connected computer. Instructions for installing and accessing the VDI can be found here: hsph.me/student-vdi

VDI SOFTWARE:

Adobe Products	MLwiN	Stat/Transfer
East6	NVivo	Stata/IC
EndNote x9	Poll Everywhere	SUDAAN
IBM SPSS Statistics	R	Zoom
JMP Pro 14 & 16	Salford Predictive Modeler	
Microsoft Office Professional 2016	SAS 9.4	

Other general-use software, or custom timeframe licensed software, is not included in this list. Please contact helpdesk@hsph.harvard.edu with questions.

STUDENT PRINTING AT THE HARVARD T.H. CHAN SCHOOL OF PUBLIC HEALTH

VDI is connected to several high-speed printers scattered around the school. The printers are collectively known as “ICF-Kresge-Common on PHAROS” in VDI. Printing to the “ICF-Kresge-Common on PHAROS” in VDI will generate a print job that can be released at any of the above printer locations.

Printed output is double-sided by default, to conserve paper. Students have an initial printing quota of 500 free pages, and can add additional pages to their account by visiting cash.harvard.edu or by adding money at the Crimson Cash kiosk located by Sebastian’s Café on Kresge 1st floor. Additional pages are 5 cents per page. For more information on Pharos printing including instructions and FAQs, please visit our website at hsph.me/pharos.

Printers are located in Kresge LL-19, Kresge LL-6, Kresge 2nd floor (one on each side of the atrium) and the FXB G level Lobby.

FAXING

A fax machine is available to students in Kresge LL-19, no cost.

FREE SOFTWARE

Microsoft Office365 applications are available for free download from your O365 account at: portal.office.com/OLS/MySoftware.aspx.

Adobe Creative Cloud software is available for free download. Get started here: huit.harvard.edu/adobe-creative-cloud

CANVAS

WHAT SHOULD I KNOW ABOUT CANVAS?

- Canvas is the learning management system at the Harvard T.H. Chan School of Public Health. It is where you access all of your course websites.
- You can go to Canvas directly by visiting: canvas.harvard.edu and logging in with your Harvardkey; or you can access your courses through my.harvard.edu. You can also set up the Canvas app on your smartphone or tablet.

WHAT FEATURES WILL I BE USING IN CANVAS?

- Depending on the course, you may be using Canvas for:
- Interacting with course materials such as the syllabus, readings, handouts, and video lectures
- Discussing course content online
- Submitting assignments online

WHAT SHOULD I DO FIRST IN CANVAS?

- Update your profile. Click on Account → Profile to edit your global Canvas profile.
- Customize your contact information. Click on Account → Settings → Ways to Contact to enter custom emails and phone numbers for text updates. All of your courses will make use of these settings.
- Set up your notification preferences. Click on Account → Notifications to customize the frequency of updates you'll receive to each of the above channels. Note: These settings will be applied across all of your courses.
- Sync your Canvas Calendar. Click on Calendar → Calendar Feed to get Assignment due dates and events on your personal calendar (e.g. Google Calendar, iCal, Outlook).

HOW CAN I LEARN MORE ABOUT CANVAS?

- For more information on using Canvas, consider the following links:
- View the Canvas Student Guide at: community.canvaslms.com/docs/DOC-4121 and the Getting Started as a Student Guide at: community.canvaslms.com/docs/DOC-2036.
- Visit the Harvard Chan School's Canvas page for the latest updates at: hsph.me/canvas.

HOW CAN I GET HELP WITH CANVAS?

- If you need assistance with Canvas, you can always click on Help in the bottom left corner of any Canvas page for 24x7 support by chat, email, or phone.
- You can also request support from the Digital Learning Team by emailing mets@hsph.harvard.edu.



Life in
Boston





TRANSPORTATION

MBTA

Affectionately known as the “T,” the Massachusetts Bay Transportation Authority (MBTA) is Boston’s public transportation system consisting of buses, subway, light rail, and commuter trains. Information about fares can be found on the MBTA website at: [mbta.com](https://www.mbta.com). The Harvard T.H. Chan School of Public Health offers eligible degree-seeking students a 50% subsidized discount for an MBTA Semester Pass for the fall and spring semesters. Information about pricing and purchasing these passes can be found at: hsph.harvard.edu/student-affairs/tpass

HARVARD SHUTTLES

Harvard offers a number of transit options that connect the Harvard Longwood Campus to Cambridge and Allston that are free with your Harvard University ID. The M-2 shuttle connects LMA (shuttle stop is at Vanderbilt Hall) to Cambridge (shuttle stop is at Lamont Library Gate) and departs at regular intervals. For the schedule visit: masco.org/lma-shuttles/routes

BIKING

Visit hsph.harvard.edu/bikes to register your bike to use the free on-campus bike cages, to join the Harvard Longwood Bicyclists, and to find lots of other bike-related resources. Contact bikes@hsph.harvard.edu if you have any questions. For information about bike safety and a Boston bike map visit: cityofboston.gov/bikes

PARKING IN THE LONGWOOD MEDICAL AREA

There is no parking available to Harvard Chan students on campus. Metered street parking is available on Huntington Avenue and other nearby streets. Some stretches of Tremont Street are zoned for 2 hour free parking. Parking garages are located in the Longwood Medical Area at the 375 Longwood Garage, 350 Longwood Galleria Garage, and 333 Longwood Avenue Garage.

PARKING IN BOSTON

For information regarding parking in Boston and Cambridge visit: cityofboston.gov/Parking or cambridgema.gov/traffic. These websites will have information about applying for parking permits, paying tickets, and towing. During snow storms pay attention to these websites and local news for information about parking bans and snow emergencies.

LOCAL RESOURCES AND BUSINESSES

GROCERIES

Shaw's – 53 Huntington Avenue
Star Market – 33 Kilmarnock Street
Stop & Shop – 1620 Tremont Street
Trader Joe's – 1317 Beacon Street
Whole Foods Market – 15 Westland Avenue
Whole Foods Market – 413 Centre Street

MAJOR SHOPPING CENTERS

401 Park – 401 Park Drive
Assembly Row – 340 Canal Street
Cambridgeside Galleria – 100 Cambridgeside Place
Prudential Center – 800 Boylston Street
South Bay Shopping Center – 8 Allstate Road

HAIR SALON AND BARBER SHOPS

Carman's Beauty Salon – 764 Huntington Avenue
Liz's Hair Care – 1605 Tremont Street
Sully's Barber & Styling Shop – 1596 Tremont Street

PHARMACIES

CVS – 350 Longwood Avenue
Walgreens – 1630 Tremont Street

LOCAL BANKING

Bank of America – 1614 Tremont Street
Citizens Bank – 1628 Tremont Street
Santander Bank – 6 Francis Street
Harvard University Employee's Credit Union (HUECU)
- 104 Mount Auburn Street, Cambridge

RESTAURANTS AND COFFEE SHOPS WITHIN A 5 MINUTE WALK FROM HARVARD CHAN

Boloco – 283 Longwood Avenue
Brigham Circle Chinese Food – 728 Huntington Avenue
Dunkin Donuts – 1631 Tremont Street
Flames Restaurant – 746 Huntington Avenue
Halal Indian Cuisine – 736 Huntington Avenue
Il Mondo Pizzeria – 738 Huntington Avenue
JP Licks – 1618 Tremont Street
Laughing Monk Café – 737 Huntington Avenue
The Mission – 724 Huntington Avenue
Mission Sushi and Wok – 1625 Tremont Street
Montecristo Mexican Grill – 748 Huntington Avenue
Papa's Pizza Company – 682 Huntington Avenue
Penguin Pizza – 735 Huntington Avenue
The Puddingstone Tavern – 1592 Tremont Street
Solid Ground Cafe – 742 Huntington Avenue
Starbucks – 283 Longwood Avenue
Squealing Pig – 134 Smith Street

DRY CLEANERS AND LAUNDRY

Huntington Square Coin-op Laundry
– 896 Huntington Avenue
Sophia's Alteration & Cleaners – 824 Huntington Avenue
Sunny Laundromat – 1460 Tremont Street

UNITED STATES POSTAL SERVICES

1575 Tremont St Lbby, Roxbury Crossing

All are either within walking distance of Harvard T.H. Chan or T accessible.

OUTDOOR ACTIVITIES

Arnold Arboretum of Harvard University — The oldest public arboretum in North America and one of the world's leading centers for the study of plants. Take the MBTA Orange Line to Forest Hills station.

arboretum.harvard.edu

Blue Hills Reservation — Hike over 7,000 acres with scenic views, varied terrain, and 125 miles of trails. From the rocky summit visitors can see over the entire metropolitan area. mass.gov

Boston Harbor Islands — National park with historic forts, lighthouses, outdoor recreation, and beaches. Ferries leave from Long Wharf every hour. bostonharborislands.org

Boston Public Garden and Swan Boats — Visit this large park in the heart of Boston for seasonal plantings, historic statues, and a place to relax during the summer. Take the MBTA Green Line to Arlington station.

Bunker Hill Monument — Built after the Battle of Bunker Hill in 1775. Climb the 294 steps to the top between 9:00 AM and 5:00 PM. Take the MBTA Orange Line to Community College station.

nps.gov/bost/learn/historyculture/bhm.htm

Charles River — Rent a canoe or kayak by the hour at Charles River Canoe and Kayak. Depart from 15 Broad Canal Way, Cambridge MA. Take the MBTA Red Line to Kendall/MIT station.

paddleboston.com

Franklin Park Zoo & Stone Zoo — Engage yourself in an experience that integrates wildlife and conservation programs, research, and education. Take the MBTA bus 22 from Roxbury Crossing station.

zoonewengland.org

Freedom Trail — A 2.5-mile, brick-lined route that leads you to 16 historically significant sites, each one an authentic treasure. Tours start at Park Street; take the MBTA Red Line to Park Street station.

thefreedomtrail.org

Lawn on D — Interactive, urban space that features free music, games, food, public art, and more. Take the MBTA Red Line to Broadway station. lawnond.com

North End — Boston's Little Italy. Explore this historic area for some authentic Italian food; make sure to try a cannoli from Mike's Pastry at 300 Hanover Street, Boston. Take the MBTA Green Line to Haymarket station.

USS Constitution "Old Ironsides" — Visit the world's oldest commissioned naval vessel afloat in Charlestown near MBTA's North Station. ussconstitutionmuseum.org

Revere Beach — America's first public beach established in 1896. Take the MBTA Blue Line to the Revere Beach station. reverebeach.com

SOWA Open Market — SOWA Open Market includes carts, indie design and a rotating group of New England's best gourmet Food Trucks. Located at 460 Harrison Ave, Boston MA. Take the MBTA Orange Line to Tufts Medical Center station. sowaboston.com/sowa-open-market

INDOOR ACTIVITIES

Harvard Museum of Natural History* — This museum is home to a sampling of specimens and the famous Glass Flower exhibit. Take the MBTA Red Line to Harvard Square. hmnh.harvard.edu

Institute for Contemporary Art* — Rich and diverse schedule of exhibitions, live music, performances, talks, and family activities. Take the MBTA Silver Line bus to Courthouse station. icaboston.org

Isabella Stewart Gardner Museum* — Visual splendor of a courtyard garden and surrounding galleries; a feast for the senses. Take the MBTA Green Line E Branch to Museum of Fine Arts station. gardnermuseum.org

MIT Museum — Free admission on the last Sunday of each month, September–June. Take the MBTA Red Line to Central Square. web.mit.edu/museum

Museum of Fine Arts* — One of the most comprehensive art museums in the world; the collection encompasses nearly 450,000 works of art. Take the MBTA Green Line E Branch to Museum of Fine Arts station. mfa.org

Museum of Science — More than 700 permanent, hands-on exhibits are enhanced by live stage presentations and science interpreters offering one-on-one challenges. Take the MBTA Green Line to Science Park. mos.org

New England Aquarium — Visit Boston's Aquarium home to a Giant Ocean Tank, presentations and shows, and a touch tank. Take the MBTA Blue Line to Aquarium station. neaq.org

Quincy Market — Visit this shopping center with stores, restaurants, and historic market buildings. Take the MBTA Orange Line to State Street station. faneuilhallmarketplace.com

Taza Chocolate Factory Tour — Learn how Taza makes 100% stone-ground organic dark chocolate and try a few samples! Take the Green Line to Lechmere and then the MBTA bus 69. tazachocolate.com/tours

**Free access with your Harvard ID*

OUTINGS AND INNINGS

Outings and Innings provides discounts to the Harvard community of up to 50% on tickets to movies, museums, and popular seasonal attractions. outingsandinings.harvard.edu



VOTING

Voting and democratic participation are at the core of students' civic engagement and students are encouraged to vote and engage in the representative process when and if eligible. Regardless of where you live, your vote matters. Join a community of Harvard Voters:

- All US citizens over the age of 18 are eligible to vote. Register to vote or check your registration status at: headcount.org/verify-voter-registration
- If you are not eligible to vote, you can still stay involved by reaching out to elected officials, encouraging your friends to vote, joining a volunteer organization (such as The Harvard Votes Challenge), and spreading awareness about issues that are important to you.
- Call your Secretary of State office with any questions or to check your registration status.

To learn more about the Harvard Votes Challenge, please visit: iop.harvard.edu/vote

MASSACHUSETTS ID/LICENSE

For people who do not have a Massachusetts driver's license, the Registry of Motor Vehicles (RMV) can issue one of two official identification cards: The Massachusetts ID and Massachusetts Liquor ID (neither of which include driving privileges). To learn more visit: mass.gov

NOTES

LONGWOOD MEDICAL AREA



Photography: Sarah Sholes, Noah Leavitt, Emily Cuccarese, Kent Dayton, Susan Young

2021 © President and Fellows of Harvard University