

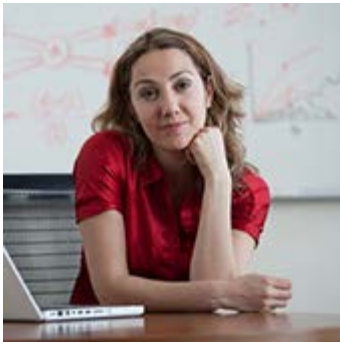
If you are still having problems viewing this message, please [click here](#) for additional help.



October 30, 2014



# Kiosk



## TODAY

### Genomic Surveillance of the 2014 Ebola Outbreak

Pardis Sabeti

October 30

4:00–5:00 PM

Kresge 502

Read about [Sabeti's work](#) in the effort to analyze Ebola's genetic code and track its mutations.



### Approaching 2014 election, polls show deep partisan divide over ACA

An analysis of public opinion polls found that most Americans still do not approve of the Affordable Care Act. The findings suggest that the outcome of congressional races will likely impact the law's future direction.



### Replacing saturated fat with polyunsaturated fat linked with lower heart disease risk

People who swap 5% of the calories they consume from sources such as red meat and butter with polyunsaturated foods, including vegetable oil, nuts, and seeds, lowered their risk of coronary heart disease.

## Event Highlights

### Harvard Longwood Campus Lunch & Learn: Healthy Eating on a Budget

November 4

12:00–1:00 PM

Countway Library, Ballard Rm.

### Live webcast: The 2014 U.S. Midterm Elections—What's at Stake for Health Reform

HSPH Forum

November 7

12:30–1:30 PM

### Senior Leader Administrative Forum Breakfast

November 13

9:00–10:30 AM

FXB G13

### Stop Hunger Now Meal Packaging Event

November 19

5:00–7:00 PM

Kresge Cafeteria

[Event calendar >](#)

## Featured video



*Reflections on Leadership:  
Kathleen Sebelius, former U.S.  
Secretary of Health and Human  
Services*

## Around the School

[Calculating the cost of](#)



### maternal deaths

A panel at HSPH recently discussed findings from five African countries where maternal death rates are high.



### The “incredible possibilities” of big data

Kent Walker, senior vice president and general counsel for Google, Inc., recently spoke at HSPH about the big data revolution for patients and doctors.

### Faculty news

Ankur Pandya has been appointed assistant professor of health decision science in the Department of Health Policy and Management.

### Harvard plans for ‘a more sustainable future’

Harvard recently launched a plan to improve the University’s environmental footprint, as well as the health and well-being of its community.

### Learn more about health benefits changes

Online and in-person educational opportunities are available for faculty and nonunion staff affected by the 2015 benefits changes.

## Research news

[Ebola: U.S. should learn from West Africa’s response](#)

[Drones may be boon to public health research](#)

[Americans mistrust medical profession, but like their own doctors](#)

[U.S. hospitals prepare for Ebola](#)

[HSPH and Mexico: Ties that bind](#)

[Wide variation in c-section rates not explained by maternal diagnoses](#)

You're receiving this email because you are an HSPH staff member or academic appointee.

[Unsubscribe](#)

### Quick links:

[Kiosk issue archive](#) | [HSPH home page](#)

[Latest HSPH news coverage](#) | [HSPH calendar](#)

Download our app for [iPhone](#) and [Android](#) | Download *Harvard Public Health* magazine for [e-reader](#)

Harvard School of Public Health | 90 Smith Street | Boston, MA 02120

[Contact us](#)