

If you are still having problems viewing this message, please [click here](#) for additional help.



# Kiosk



## **In memoriam: Prof. Marvin Zelen, a 'tremendous force' in biostatistics**

Professor [Marvin Zelen](#) of the Department of Biostatistics, died on November 15 at 87 after a battle with cancer. He was known as a giant in the field of biostatistics, as well as a man of vision, generosity, and warmth.



## **In memoriam: John Briscoe, water resources expert**

[John Briscoe](#), professor of the practice of environmental health, died on November 12 at 66. He received what is known as the "Nobel Prize of Water" for his contributions to water management that have improved the lives of millions worldwide.



## **New online calculator estimates cardiovascular disease risk**

The new Healthy Heart Score gives individuals an easy method to estimate their 20-year risk of developing cardiovascular disease, in addition to tips for incorporating heart-healthy habits into their daily lives.

November 20, 2014



## **Event Highlights**

### **Addressing Ebola: An HSPH Series on the 2014 Outbreak**

Lindsey Baden, *NEJM*, Harvard-MIT Division of Health Sciences and Technology  
November 20  
4:00–5:00 PM

### **Hack Ebola (with Data!)**

November 21–23  
Northwest Building, Harvard

### **Live webcast—Ebola Update: Where Are We with Vaccines, U.S. Preparedness and the West African Crisis**

The Forum at HSPH  
November 25  
12:30–1:30 PM

### **Live webcast—HIV/AIDS: Treatment as Prevention**

The Forum at HSPH  
December 1  
12:30–1:30 PM

### **Yerby Diversity Lecture — Native American Health Care: Challenges For The Future**

Tom Sequist  
December 1  
11:30 AM–12:30 PM  
Office of Diversity & Inclusion  
35 Wigglesworth Street

[Event calendar >](#)

## **Around the School**

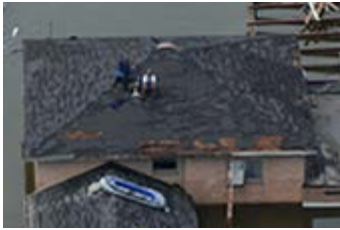
### **Defining rights**

Scholars and reproductive rights

## **Research news**



activists gathered to better understand the role of international courts in defining reproductive and sexual rights.



### [A storm leaves poor health](#)

Yerby Fellow [Mariana Arcaya](#) discusses her work tracking the health of a group of Hurricane Katrina survivors in the years following the storm.

### [Take the Cold Turkey Pledge](#)

Before you leave for the long holiday weekend, take a few easy steps to shut down your workspace and reduce the burden on our resources.

### [Season of Giving](#)

The Season of Giving celebrates the good work and the goodwill of those within our community. Highlights include food and toy drives, and the opportunity to send colleagues notes of appreciation.



[Police face higher risk of sudden cardiac death during stressful duties](#)

[Health insurance enrollment websites experience smoother relaunch](#)

[For India's children, poor sanitation affects growth](#)

[New insights into mechanism behind tuberous sclerosis complex tumors](#)

[Text messages effective in treating malaria](#)

You're receiving this email because you are an HSPH staff member or academic appointee.

[Unsubscribe](#)

#### **Quick links:**

[Kiosk issue archive](#) | [HSPH home page](#)

[Latest HSPH news coverage](#) | [HSPH calendar](#)

Download our app for [iPhone](#) and [Android](#) | Download *Harvard Public Health* magazine for [e-reader](#)

Harvard School of Public Health | 90 Smith Street | Boston, MA 02120

[Contact us](#)