

If you are still having problems viewing this message, please [click here](#) for additional help.



# Kiosk

October 15, 2015



---

## Event Highlights

### Record keeping: What is regulatory documentation?

October 19  
Noon-1:00 PM  
Countway Library, Ware Room

### EcoOpportunity meeting

October 21  
11:00 AM-Noon  
Kresge, 708

### #BlackLivesMatter – A Challenge to the Medical and Public Health Communities

Mary T. Bassett  
October 26  
4:00 PM  
Kresge, G1  
[RSVP](#)

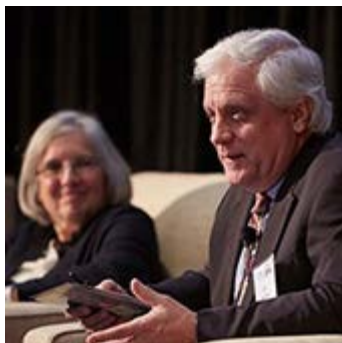
[Event calendar >](#)



---

### Taking action on unsafe dietary supplements

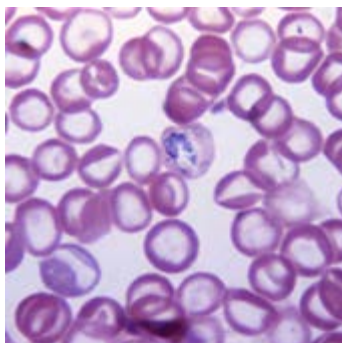
Faculty and students are spearheading an effort in Massachusetts to regulate sales of dietary supplements.



---

### At HUBweek, experts focus on global health threats

A series of panels highlighted four major global health threats: infectious diseases, harmful environments, humanitarian crises, and failing health systems.



---

### Apes, humans share gene linked with malaria's virulence

The malaria parasite molecules associated with severe disease and death share key gene segments with chimp and gorilla malaria parasites, separated by millions of years.



[Professor Donna Spiegelman and her team are improving how air pollution's effect on health is measured.](#)

---

## Research news

[Like water, coffee a healthy beverage choice](#)

---

## Around the School



### President's Challenge for entrepreneurship

Each year, Harvard encourages students and postdoctoral fellows from across Harvard's schools to apply fresh ideas to some of the most important and challenging problems of our

time. This year's Challenge invites work in five categories: affordable health, education innovation, economic development and sustainable employment, energy and the environment, and food and agriculture.

### Flu clinics at Kresge

Flu clinics will be held October 22 and 29 in the Kresge Cafe, 9:00-11:00 AM. Clinics are free to all faculty, staff, and students. A Harvard ID is required. Supplies are limited and clinics will close when all doses have been administered.

### Administrative leadership 'Career Conversations' breakfast

Join Michael Kan, Executive Dean for Administration, on Wednesday, October 21, as he speaks about his career path and experiences. The event takes place from 9:00 – 10:30 AM in Room 1302, Building 1. [RSVP today](#).

### Longwood Area cycling summit

Connect with colleagues and pick up some great cycling information on Wednesday, October 21, from Noon-1:00 PM in the Jimmy Fund Auditorium at the Dana Farber Cancer Institute. [Register here](#).

[Pigments in colorful vegetables may ward off macular degeneration](#)

[How to cut gun deaths](#)

[Should GMO foods be labeled?](#)

You're receiving this email because you are a staff member or academic appointee.

[Unsubscribe](#)

#### Quick links:

[Kiosk issue archive](#) | [School home page](#)

[Latest news coverage](#) | [Event calendar](#)

Download our app for [iPhone](#) | Download *Harvard Public Health* magazine for [e-reader](#)

Harvard T.H. Chan School of Public Health | 90 Smith Street | Boston, MA 02120

[Contact us](#)