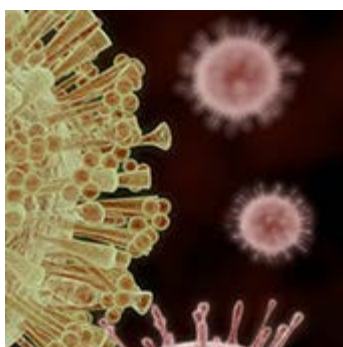


If you are still having problems viewing this message, please [click here](#) for additional help.



Kiosk



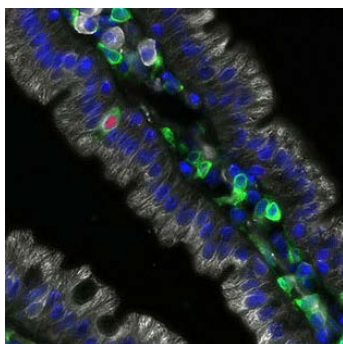
Live webcast: The Zika Crisis

This Forum webcast on Friday at 12:30 will examine what we know and don't know about the Zika virus, drawing parallels and lessons from the Ebola outbreak.



Town hall on diversity and inclusion

On Wednesday, March 9, at 12:30 Acting Dean David Hunter and Associate Dean Meredith Rosenthal will provide updates on the School's progress towards improving diversity and inclusion and other highlights from the forthcoming Dean's Annual Report on Diversity and Inclusion. The town hall will take place in Kresge G1.



Special cells can "taste" parasites in the gut

Tuft cells use "taste chemosensation" — the same process that allows our taste buds to detect different flavors — to find and help destroy parasites.

March 3, 2016



Event Highlights

Career development conversations – for staff

March 9

Noon-1:30 PM

Countway Library, Minot Room

The impact of buildings on health, comfort and productivity

Joseph G. Allen and Memo Cedenio

March 10

12:30-1:30 PM

FXB G12

Department of Biostatistics colloquium series

Daniela Witten

March 24

12:30-2:00 PM

Building 2, Room 426

[Event calendar >](#)

Featured podcast



Each Friday this podcast delivers top health headlines—from wellness tips to important global health trends. [Listen on Soundcloud](#), [subscribe through iTunes](#), or [stream it via Stitcher](#).



Building bridges between public health and business

John Quelch is an ambassador for public health in the business world, and he believes both fields can inform and benefit the other.

Research news

Poll: Many Americans view their health care positively, but report problems with costs, quality, and access to services

Evaluating antenatal and postnatal care around the globe

Papers on fat in the diet recognized for impact

Laurie Glimcher named new head of Dana-Farber Cancer Institute

Around the School



Heart disease prevention tool shows promise

New research suggests a tool developed at the Harvard Chan School two years ago—the Healthy Heart Score—could help doctors to promote healthy behaviors in their patients.



EPA head addresses Flint water crisis

Gina McCarthy, Administrator of the Environmental Protection Agency, spoke to students about her path to leadership and current issues facing the EPA.

Campus Climate Assessment Survey event

Questions about the ongoing Campus Climate Assessment Survey? The Office of Diversity and Inclusion will be holding a special session on March 4 at 12:30 in Kresge G4 so that people can ask questions about the survey and/or complete the survey in a community setting. Free pizza will be served.

Donate feminine hygiene products to benefit Rosie's Place

In recognition of International Women's Day on March 8, the Women, Gender and Health Interdisciplinary Concentration, Women In Leadership, and Women and Health Initiative will be running a month-long drive collecting feminine hygiene products for women at Rosie's Place, the first women's shelter founded in the United States. You can donate brand new boxes or individually-wrapped tampons, pads, and/or panty liners. Please look for the purple donation bins in the FXB Building and Kresge from March 1-31.

You're receiving this email because you are a staff member or academic appointee.

[Unsubscribe](#)

Quick links:

[Kiosk issue archive](#) | [School home page](#)

[Latest news coverage](#) | [Event calendar](#)

Download our app for [iPhone](#) | Download *Harvard Public Health* magazine for [e-reader](#)

Harvard T.H. Chan School of Public Health | 90 Smith Street | Boston, MA 02120

[Contact us](#)