

If you are still having problems viewing this message, please [click here](#) for additional help.



SCHOOL OF PUBLIC HEALTH

Kiosk

July 28, 2016



Event Highlights

HR open office hours

August 2 & 4
10:00 AM-2:00 PM
Landmark Ctr., 3rd Floor East,
Room 003 (August 2);
Kresge 504 (August 4)

Hot Topics Lecture: Decision Analysis for Health Policy Questions

August 2
12:30-2:00 PM
Kresge G2

Harvard Innovation Lab Administrators' Orientation

August 5
9:00 AM-12:30 PM
125 Western Ave., Boston

Scoopfest

August 11
2:30-4:00 PM
Kresge Cafeteria

[Event calendar >](#)



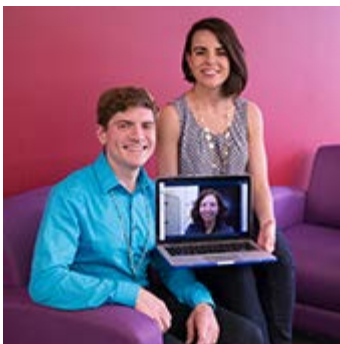
Karen Emmons named Dean for Academic Affairs

Emmons was previously a faculty member in the Department of Social and Behavioral Sciences from 1994-2014, and served from 2009-2013 as the School's Associate Dean for Research.



Defending the 'wonder drugs'

In an era of rampant antibiotic resistance, Yonatan Grad is pioneering new ways to track and control the spread of infectious disease — and preserve the drugs' potency.



Traveling Fellows pursue research far afield

Corey Prachniak, MPH '16, is exploring gender, health, and human rights in Colombia; Laura Goodman, MPH '17, is researching birth defects in Mongolia; and Yadira Almodóvar-Díaz, DrPH '17, is working to improve health care in Puerto Rico.

Podcast: The dangers of excess weight



In this episode: The new study refuting the so-called "obesity paradox," plus why light pollution could make spring arrive earlier.



Induced labor not linked with risk for autism

The new finding suggests that concern about autism risk should not factor into clinical decisions about whether or not to induce labor.

In the news

"Being Mortal" earns Emmy nomination

As overweight and obesity increase, so does risk of dying prematurely

Companies can profit when workers are less stressed

Protecting children from trauma of gun violence, racism

Building the evidence to shape health policies under Obamacare

Around the School



Helping nations assess and manage immunization costs

Research and a new website developed at Harvard Chan School will help governments worldwide manage their immunization programs and plan for the future.

A Boston doctor treats facial trauma in Rwanda

Facial plastic and reconstructive surgeon David Shaye, an MPH student at Harvard Chan School, spends three months every year as a volunteer surgeon and instructor in Rwanda.

Register for free course on humanitarian response

The course from the Harvard Humanitarian Initiative will teach the principles guiding humanitarian response to modern emergencies, and the challenges faced in the field today.

Summer music series kicks off

Each Wednesday this summer talented musicians from Berklee College of Music are performing free concerts from 12:30-1:30 PM in the Kresge Courtyard. The concerts run until August 24.

You're receiving this email because you are a staff member or academic appointee.

[Unsubscribe](#)

Quick links:

[Kiosk issue archive](#) | [School home page](#)

[Latest news coverage](#) | [Event calendar](#)

Download our app for [iPhone](#) and [Android](#) | Read *Harvard Public Health* on [e-reader](#)

Harvard T.H. Chan School of Public Health | 90 Smith Street | Boston, MA 02120

[Contact us](#)