

Rethinking research: Biosafety for potential pandemic pathogens



Laboratory-modified, highly virulent strains of the H5N1 virus were recently developed in such a way that they can be passed from one mammal to another (ferrets), suggesting that the new and

potentially dangerous strain might easily be transferrable between humans. In a new commentary in the journal *mBio*, HSPH faculty members Marc Lipsitch and Barry Bloom state that scientists need to come together to develop new standards for deciding when such research should be done.

[Watch video interview with Lipsitch](#)

Quick Links



[Kiosk issue archive](#)

[HSPH home page](#)

[Latest HSPH news coverage](#)

[HSPH videos and podcasts](#)

Download our app for [iPhone](#) and [Android](#)

[HSPH calendar](#)

[Contact us](#)

Diets of low-income adults in federal food program need improvement



Roughly one in seven Americans receive benefits to purchase food from the Supplemental Nutrition Assistance Program (SNAP), formerly the Food Stamp Program. SNAP is designed to alleviate hunger and provide nutritious food to its beneficiaries. However, a new study by HSPH researchers

has found that SNAP participants' diets are actually worse than those of eligible adults not participating in the program. [Read more](#)

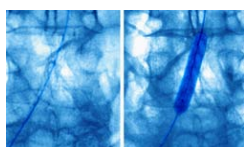
Event highlights



TODAY:
**Virus Hunting:
New Frontiers in
the Battle to
Stop the Next
Global Pandemic**

Speaker:
[Nathan Wolfe](#), AM '97, SD '99,
Lokey Visiting
Professor in
Human Biology,
Stanford
University, founder
and CEO of Global
Viral, and author
of *The Viral
Storm: The Dawn
of a New Pandemic
Age*

Heart attack patients in states with public reporting less likely to receive angioplasty



Patients entering hospitals with heart attacks in states with mandatory public reporting are less likely to receive angioplasties to fix heart blockages than patients in states without public reporting, according to a new HSPH study. The patients most affected were those considered "high-risk." [Read more](#)

Around the School

Last chance for a flu shot

October 25, 9:00-11:00 AM, Kresge Cafeteria
Free to faculty, staff, and students. Harvard ID required.
Please note that doses are limited and may run out early.

HSPH website upgrading technology, getting a facelift **Information session October 16, 3:00-4:00 PM, G2**

The School will be retiring its existing content management system (CMS), which most departments and groups use to maintain their sections of the website. The CMS will be replaced with WordPress, an easy-to-use open source content management platform that is employed by many universities, non-profits and for-profit organizations. As part of the transition, the web team is working hard to update the look and feel of the site. The upgraded site is expected to go live in November. Come to the information session to learn more.

[Sign up for free edX online quantitative methods course](#)

Beginning October 15, HSPH will offer a new free online course, PH207x *Health in Numbers: Quantitative Methods in Clinical & Public Health Research*. The course is an online adaptation of material from the Harvard School of Public Health's classes in epidemiology and biostatistics for students with a sound grasp of algebra. [Read more](#)

[Apply now for Yerby Postdoctoral Fellowship Program](#)

Applications are now being accepted for the Yerby Postdoctoral Fellowship Program. Applicants to the Yerby program should advance the goal of increasing the diversity of young scholars pursuing university-based careers in public health. Each Yerby fellow works closely with a senior mentor with compatible research interests and receives additional training in all the domains critical to academic success.

The appointment is for one year, beginning September 1, 2013, and is renewable for a second year. The salary is \$62,000 plus benefits, with a \$3,500 supplemental budget for travel expenses and research. The application deadline is November 1, 2012.

For more information about eligibility and application requirements as well as the link to our online application, please visit www.hsph.harvard.edu/yerby.

[PopTech Science Fellows announced](#)

HSPH Associate Professor of Immunology and Infectious Diseases [Flaminia Catteruccia](#) and MPH student [Guiseppe "Bepi" Raviola](#) were honored for their high potential as innovators in their fields.

Upcoming events for Longwood-area bicyclists



Do you commute to work on a bicycle? If so, you'll be treated to a **FREE BREAKFAST** on October 22 from 9:00-9:30 AM in the Kresge Courtyard. Just bring your helmet, and you can help yourself to some hot oatmeal, coffee, bagels, and fruit -- all while socializing with fellow bicyclists! The event is sponsored by the [Harvard Longwood Bicyclists](#).

The following day, the same group will be hosting its first-ever Bike Brainstorm on October 23 from 12:30-1:30 PM in Kresge 502. This will be a chance for bicyclists in the Longwood

October 11
4:00-5:00 PM
Kresge G-1

[The Impact of Male Behavior on Women's Health](#)

October 16
12:30-1:30 PM
FXB G13

[Fifteenth Annual John B. Little Symposium](#)

Topic: Cancer stem cells and tumor metabolism
October 26-27
[Register](#)

News and interviews



[Community reaction critical to rebuilding lives of child soldiers](#)

Medical Area to get together to talk about priorities and projects for the year ahead.