



SCHOOL OF PUBLIC HEALTH

Kiosk

November 16, 2017



Event Highlights

Nature and Health— Inextricably Linked

Voices in Leadership webcast:

Sally Jewell

November 16

Noon-12:30 PM

Bending the Trends: Achieving Health Beyond the Traditional Health Care System

Herbert Sherman Memorial
Lecture

November 29

4:00-5:00 PM

Kresge G3

Nanolecture Series: Flame- made Nanomaterials

November 30

1:00-2:00 PM

Bldg. 1, Room 1302

HIV/AIDS—On the Road to Cure

December 1

Noon-1:00 PM

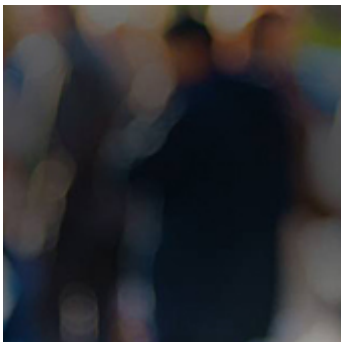
FXB 301

[Event calendar >](#)



Good news, bad news

Americans are drinking fewer sugary beverages, but consumption among adolescents and young adults remains high, according to a new study.



Discrimination in America

More than one-third of Native Americans report slurs, violence, harassment, and being discriminated against in the workplace, according to the latest poll from Harvard Chan School, NPR, and the Robert Wood Johnson Foundation.



MPH students showcase summer practicum projects

Students in the inaugural MPH-65 program recently gathered for a poster night to share summer practicum research findings with their peers.

Watch: America's diabetes epidemic

During this Forum webcast experts discussed the latest

Listen: A cellular message in a bottle



In this week's podcast we explain how a newly discovered cellular



breakthroughs in treating and preventing diabetes in America.

messaging mechanism could have important implications for disease treatment.

In the news

[Eating nuts linked with better heart health](#)

[Humans activities are disrupting the planet—and threatening our health](#)

[Do hospitals really need so many beds?](#)

[Brisk walking may reduce early death risk in older women](#)

Around the School



Reporting bias-related incidents

A new resource from the Office of Diversity and Inclusion explains how and why to report bias-related incidents.



Voices in Leadership: Donna Shalala

Donna Shalala, former president of the Clinton Foundation, shared lessons on leading in higher education, foundations, and in government.

Season of Giving food drive

The Harvard Longwood Campus community has kicked off its Season of Giving food drive in collaboration with ABCD, a nonprofit organization that provides tools and resources to low-income residents in the Greater Boston region. The food drive runs until November 17. See a full list of food collection boxes [here](#).

You're receiving this email because you are a staff member or academic appointee.
[Unsubscribe](#)

Quick links:

[Latest news coverage](#) | [Event calendar](#) | [Kiosk issue archive](#) | [School home page](#)
Download our app for [iPhone](#) and [Android](#) | Read [Harvard Public Health](#) magazine

Harvard T.H. Chan School of Public Health | 90 Smith Street | Boston, MA 02120
[Contact us](#)