



Reaching Newborns After Delivery: Lessons from Ethiopia Community-Based Newborn Care Program

Ministry of Health – Ethiopia
(Lisanu Taddesse)



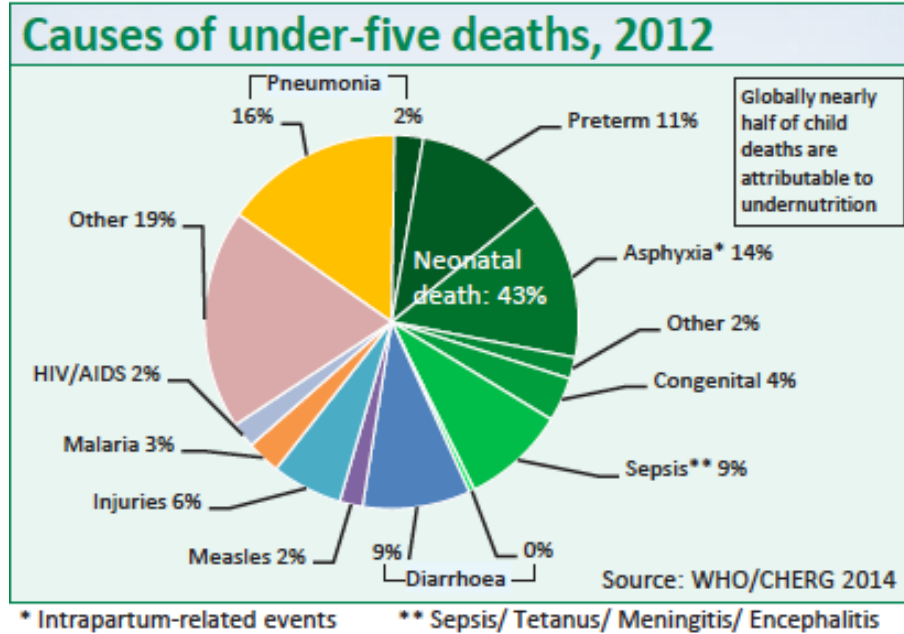
Background



- Second most populous country in Africa /90.1 million.
- Achieved many of the MDG targets for health through institutionalization of Ethiopia's innovative flagship Health Extension Program (HEP).
- Access to health services is >92%;
- By 2014, Under-five mortality and neonatal mortality are 64 and 28 per 1000 live births respectively;
- ANC1 coverage 98.1%; skill birth attendant 41%; and
- PNC coverage 66%.
- A nine-pronged community based newborn care package (CBNC) was launched in March 2013 using the four C's approach – contact, capture, care and completion



Background





Methodology

- Desk review of program reports, review meeting reports, rapid assessments and program data base of phase one CBNC implementation conducted from March 2013 to December 2014, in the 7 zones across the country



Results

- Community based MNH services, including newborn sepsis management, where scaled up where referral was not possible
- Primary Health Care Unit capacity was strengthened to provide acceptable quality maternal, newborn and child health in catchment health posts
- Skilled delivery, postnatal care and follow-up have significantly improved in the 7 zones



Results cont' d

- Contributing factors
 - *Health Development Army*
 - Policy change for hospital stay for 24 hours post-partum in some facilities
 - Allowing birth companion and cultural ceremonies at health facilities
 - Emergency transport/referral systems
 - Maternity waiting homes
 - Home delivery free kebele initiative
 - BeMONC, CeMONC and helping babies' breath (HBB) strategy expansion
 - cost exemption of maternal and newborn health services



Results cont' d

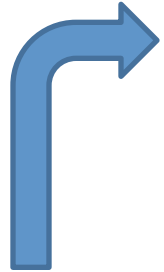
- Barriers identified
 - cultural belief and practice
 - late identification of pregnancy
 - lack of awareness newborn care practices



Conclusion

In a resource limited setting, tackling Morbidity and Mortality due to Neonatal sepsis

Early prenatal and postnatal contact



DA'AMA DHALOOTAA HANGA JFA 2, DHUKKUBSATAN QORACHUU, DHIBEE ADDAAN BAASUU FI WAL'AANNU

ADDAAAN BAASI

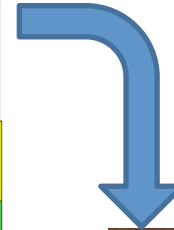
QORADHUU

ADDAAAN BAASI

WAL'AANNU

GAFAADHU	BAALTTODDAA	ADDAAAN BAASI	WAL'AANNU
<p>GAFAADHU</p> <ul style="list-style-type: none"> • Kullotee • hamaa dhaafan 	<p>BAALTTODDAA</p> <p>• Dhaafan 2'ya, 3'ya, 4'ya, 5'ya, 6'ya, 7'ya, 8'ya, 9'ya, 10'ya, 11'ya, 12'ya, 13'ya, 14'ya, 15'ya, 16'ya, 17'ya, 18'ya, 19'ya, 20'ya, 21'ya, 22'ya, 23'ya, 24'ya, 25'ya, 26'ya, 27'ya, 28'ya, 29'ya, 30'ya, 31'ya, 32'ya, 33'ya, 34'ya, 35'ya, 36'ya, 37'ya, 38'ya, 39'ya, 40'ya, 41'ya, 42'ya, 43'ya, 44'ya, 45'ya, 46'ya, 47'ya, 48'ya, 49'ya, 50'ya, 51'ya, 52'ya, 53'ya, 54'ya, 55'ya, 56'ya, 57'ya, 58'ya, 59'ya, 60'ya, 61'ya, 62'ya, 63'ya, 64'ya, 65'ya, 66'ya, 67'ya, 68'ya, 69'ya, 70'ya, 71'ya, 72'ya, 73'ya, 74'ya, 75'ya, 76'ya, 77'ya, 78'ya, 79'ya, 80'ya, 81'ya, 82'ya, 83'ya, 84'ya, 85'ya, 86'ya, 87'ya, 88'ya, 89'ya, 90'ya, 91'ya, 92'ya, 93'ya, 94'ya, 95'ya, 96'ya, 97'ya, 98'ya, 99'ya, 100'ya</p>	<p>ADDAAAN BAASI</p> <p>• Dhaafan 1'ya, 2'ya, 3'ya, 4'ya, 5'ya, 6'ya, 7'ya, 8'ya, 9'ya, 10'ya, 11'ya, 12'ya, 13'ya, 14'ya, 15'ya, 16'ya, 17'ya, 18'ya, 19'ya, 20'ya, 21'ya, 22'ya, 23'ya, 24'ya, 25'ya, 26'ya, 27'ya, 28'ya, 29'ya, 30'ya, 31'ya, 32'ya, 33'ya, 34'ya, 35'ya, 36'ya, 37'ya, 38'ya, 39'ya, 40'ya, 41'ya, 42'ya, 43'ya, 44'ya, 45'ya, 46'ya, 47'ya, 48'ya, 49'ya, 50'ya, 51'ya, 52'ya, 53'ya, 54'ya, 55'ya, 56'ya, 57'ya, 58'ya, 59'ya, 60'ya, 61'ya, 62'ya, 63'ya, 64'ya, 65'ya, 66'ya, 67'ya, 68'ya, 69'ya, 70'ya, 71'ya, 72'ya, 73'ya, 74'ya, 75'ya, 76'ya, 77'ya, 78'ya, 79'ya, 80'ya, 81'ya, 82'ya, 83'ya, 84'ya, 85'ya, 86'ya, 87'ya, 88'ya, 89'ya, 90'ya, 91'ya, 92'ya, 93'ya, 94'ya, 95'ya, 96'ya, 97'ya, 98'ya, 99'ya, 100'ya</p>	<p>WAL'AANNU</p> <p>• Dhaafan 1'ya, 2'ya, 3'ya, 4'ya, 5'ya, 6'ya, 7'ya, 8'ya, 9'ya, 10'ya, 11'ya, 12'ya, 13'ya, 14'ya, 15'ya, 16'ya, 17'ya, 18'ya, 19'ya, 20'ya, 21'ya, 22'ya, 23'ya, 24'ya, 25'ya, 26'ya, 27'ya, 28'ya, 29'ya, 30'ya, 31'ya, 32'ya, 33'ya, 34'ya, 35'ya, 36'ya, 37'ya, 38'ya, 39'ya, 40'ya, 41'ya, 42'ya, 43'ya, 44'ya, 45'ya, 46'ya, 47'ya, 48'ya, 49'ya, 50'ya, 51'ya, 52'ya, 53'ya, 54'ya, 55'ya, 56'ya, 57'ya, 58'ya, 59'ya, 60'ya, 61'ya, 62'ya, 63'ya, 64'ya, 65'ya, 66'ya, 67'ya, 68'ya, 69'ya, 70'ya, 71'ya, 72'ya, 73'ya, 74'ya, 75'ya, 76'ya, 77'ya, 78'ya, 79'ya, 80'ya, 81'ya, 82'ya, 83'ya, 84'ya, 85'ya, 86'ya, 87'ya, 88'ya, 89'ya, 90'ya, 91'ya, 92'ya, 93'ya, 94'ya, 95'ya, 96'ya, 97'ya, 98'ya, 99'ya, 100'ya</p>

Case-identification and early appropriate care



Treatment and Completion of a full course management





Thank You