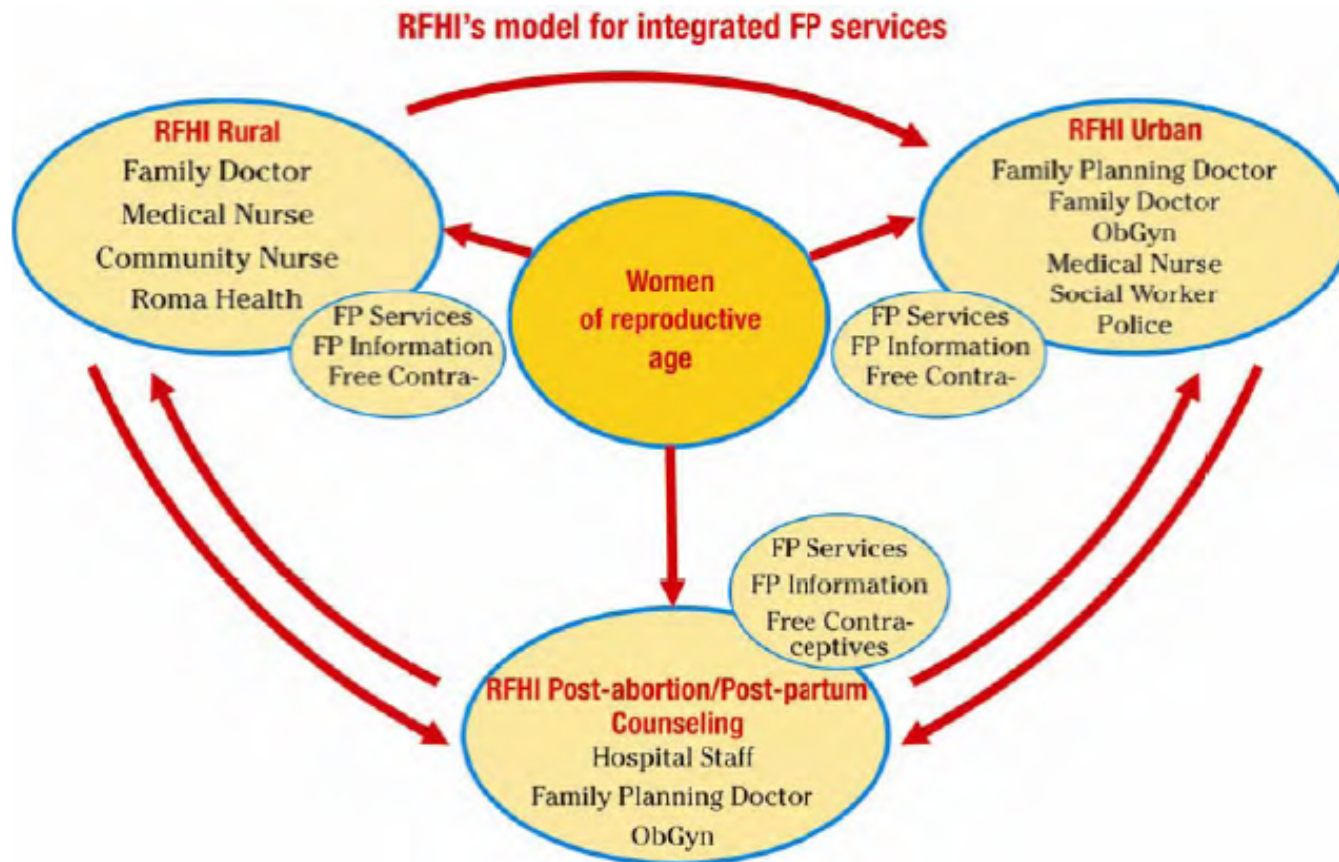


Reducing Maternal Mortality in Romania by Increasing Equitable Access and Use of Family Planning: An Update After Donor's Withdrawal

Merce M. Gasco, MD

Mexico, 2015

FAMILY PLANNING COUNSELING AND CONTRACEPTIVES AVAILABLE AT ALL ENTRY POINTS OF THE HEALTH SYSTEM: A FP SAFETY NET



POST-PARTUM FAMILY PLANNING: INTRODUCTION OF IUD INSERTION AFTER DELIVERY

Și tu poți să fii
O MĂMICĂ
FĂRĂ GRIJI



1. Ți hrănești copilul numai la sân?
2. Ai mai puțin de 6 luni de când ai născut?
3. Încă nu ți-a revenit menstruația?

Ai răspuns DA la aceste 3 întrebări? atunci... **NU Vei RĂMÂNE ÎNSĂRCINATĂ!**

Ca să afli mai multe despre aceasta precum și despre metodele de contracepție întreabă medicul ginecolog, medicul de planificare familială, asistenta, medicul de familie, asistenta medicală comunitară sau mergi la un cabinet cu semnul



Atenție! Această metodă nu te ferește însă de infecțiile cu transmitere sexuală.



YOU CAN BE A MOM WITHOUT WORRIES

1. Are you breastfeeding only?
2. Is your baby less than 6 months old?
3. Have your menses returned yet?

Did you answer YES to these 3 questions?

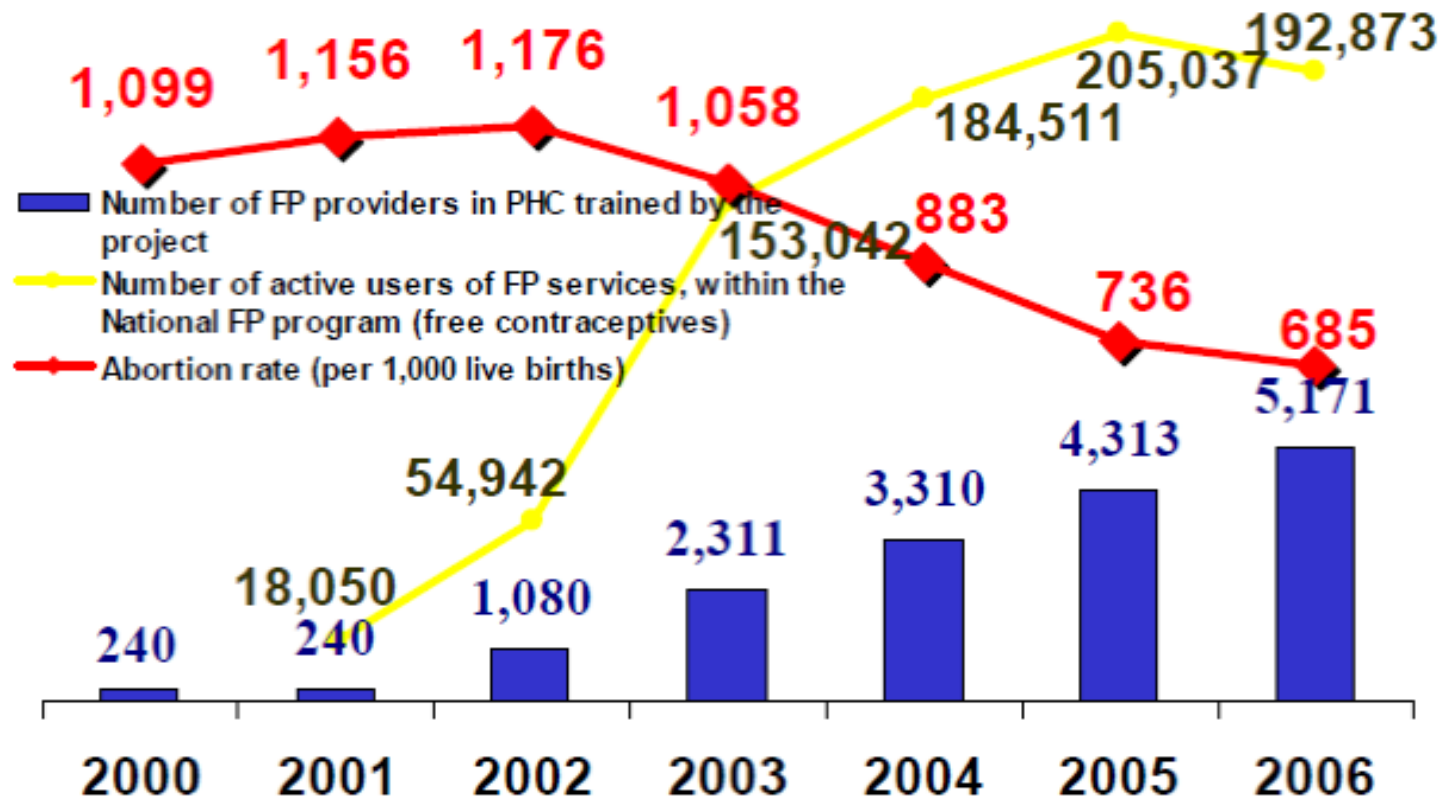
In this case...you should not to get pregnant!

If you would like more information about this or other contraception methods ask your gynecologist, FP doctor, nurse or any health clinic with the sign. (The logo of the National Program for FP that is posted in every clinic that is offering FP services and free contraceptives).

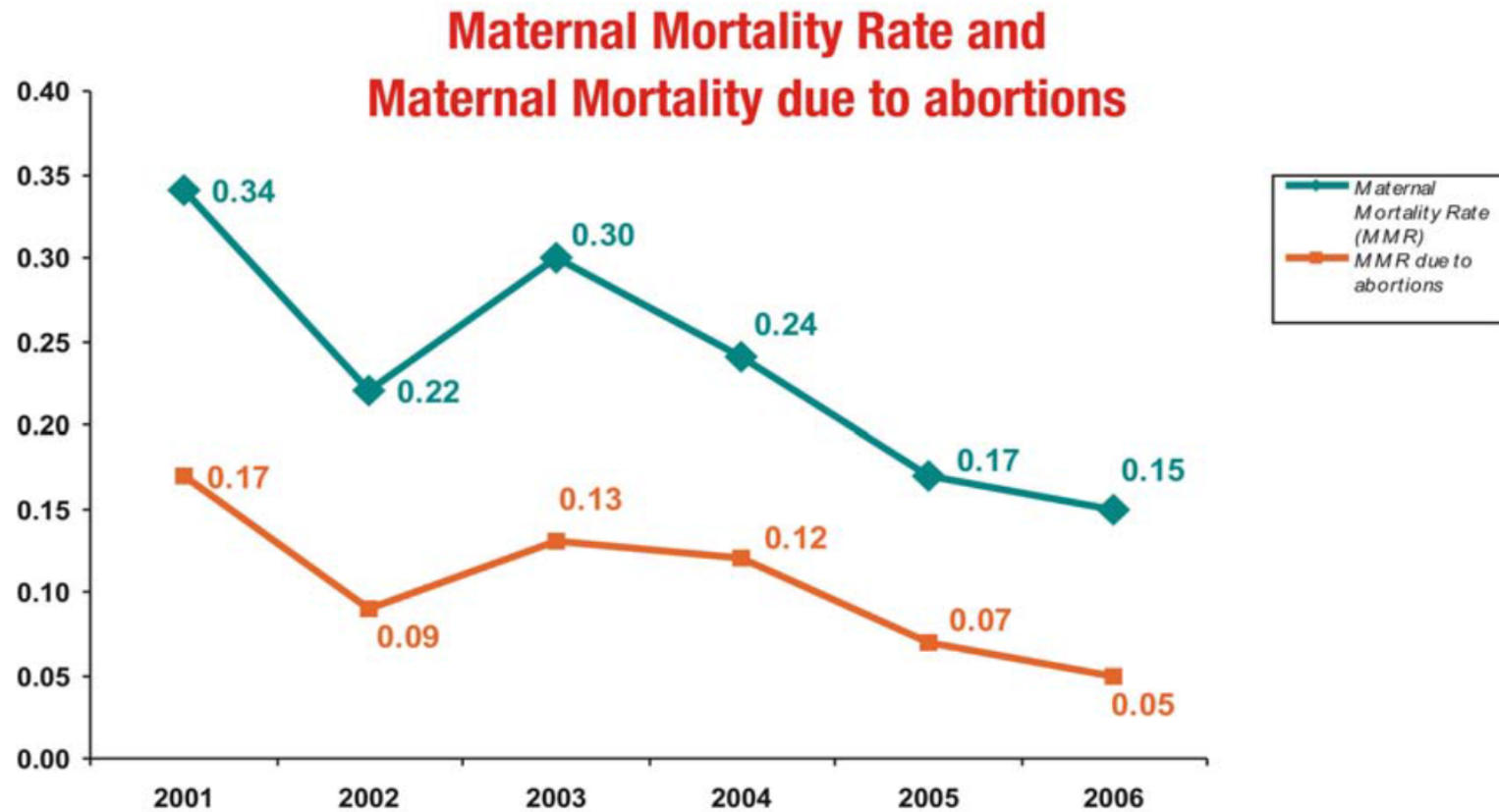
Attention! This method doesn't protect you against sexual transmitted infections.



RELATIONSHIP BETWEEN HEALTH PROVIDERS TRAINED, ABORTION RATE AND ACTIVE USERS



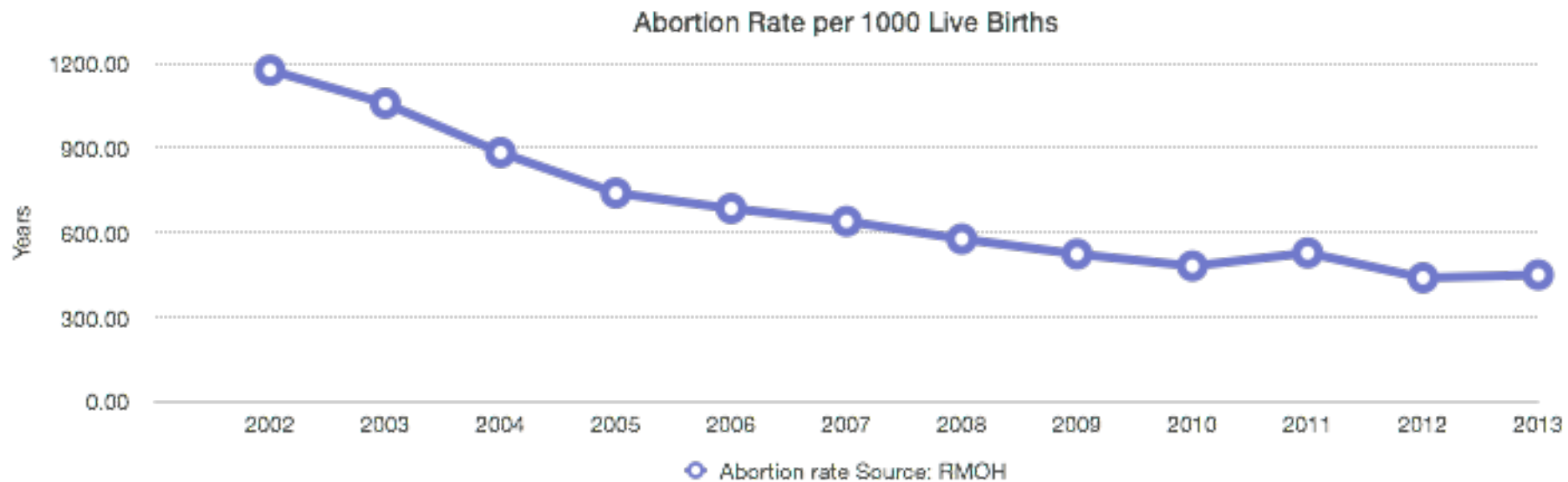
MATERNAL MORTALITY AND MATERNAL MORTALITY DUE TO ABORTION



KEY ACHIEVEMENTS MONITORED

- Favorable evolution of key health indicators.
- Provision of FP at PHC level is maintained and incentivized
- Maternal Health and remains a priority in the political agenda

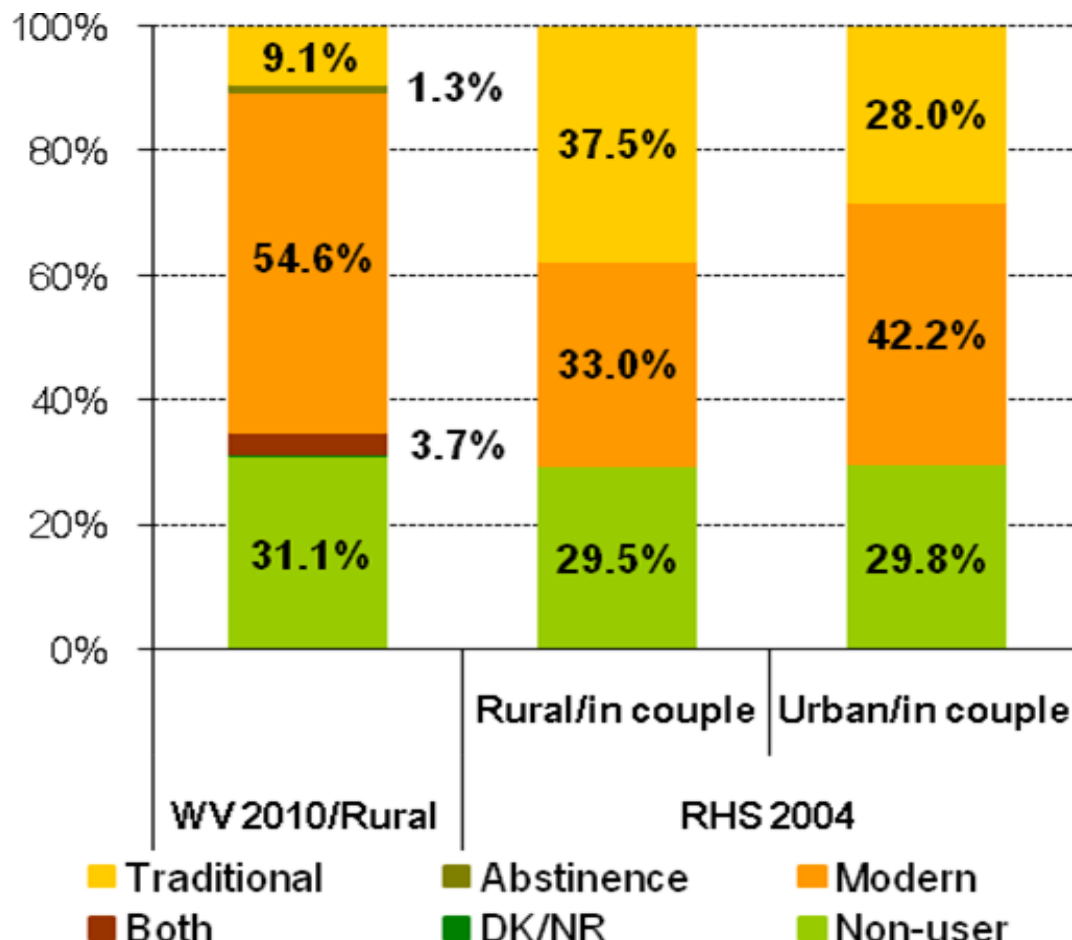
SHIFT FROM ABORTION TO CONTRACEPTION



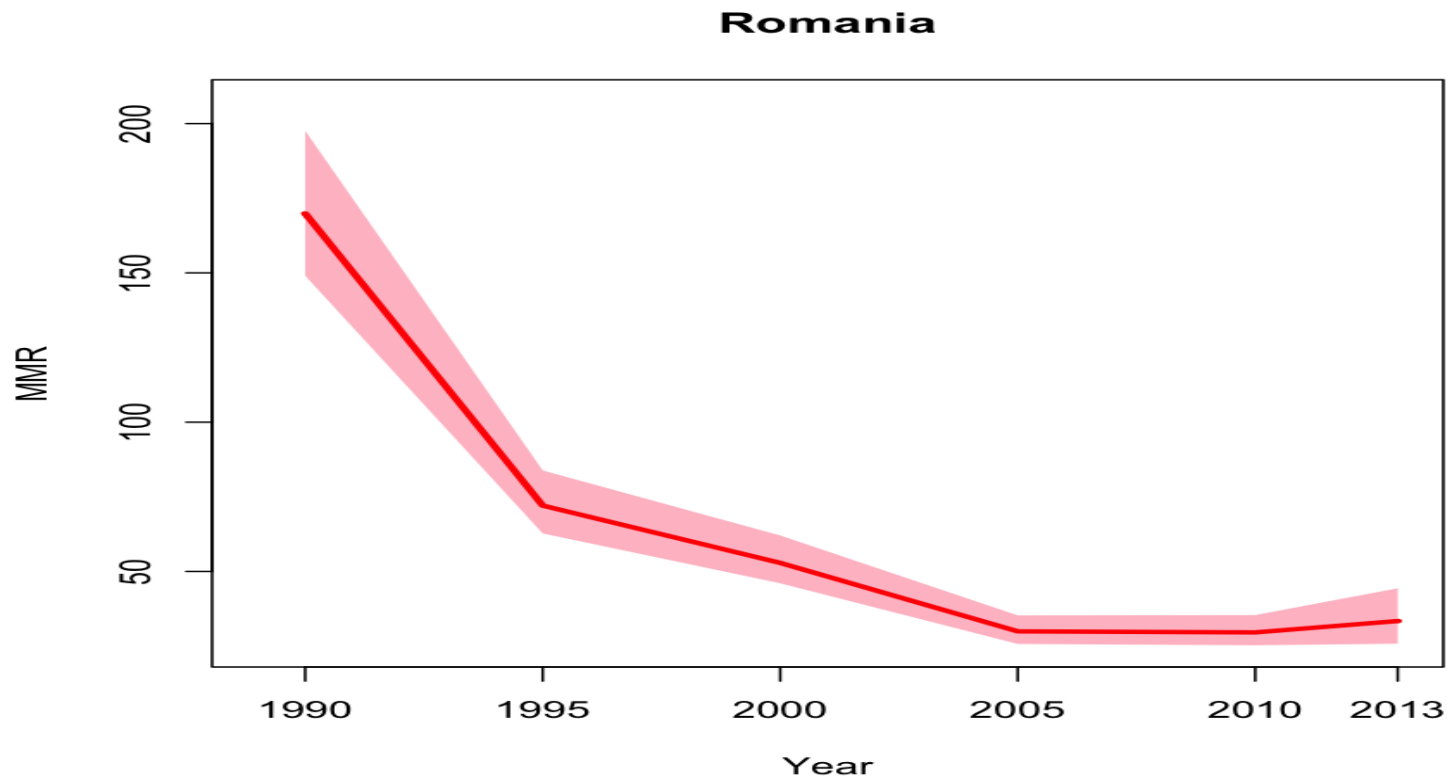
CONTRACEPTIVE USE IN ROMANIA

Recent national RH surveys have not been conducted, but a sub-national World Vision survey of new mothers indicated sustainable propensity to use modern contraception among Romanian WRA, in rural areas.

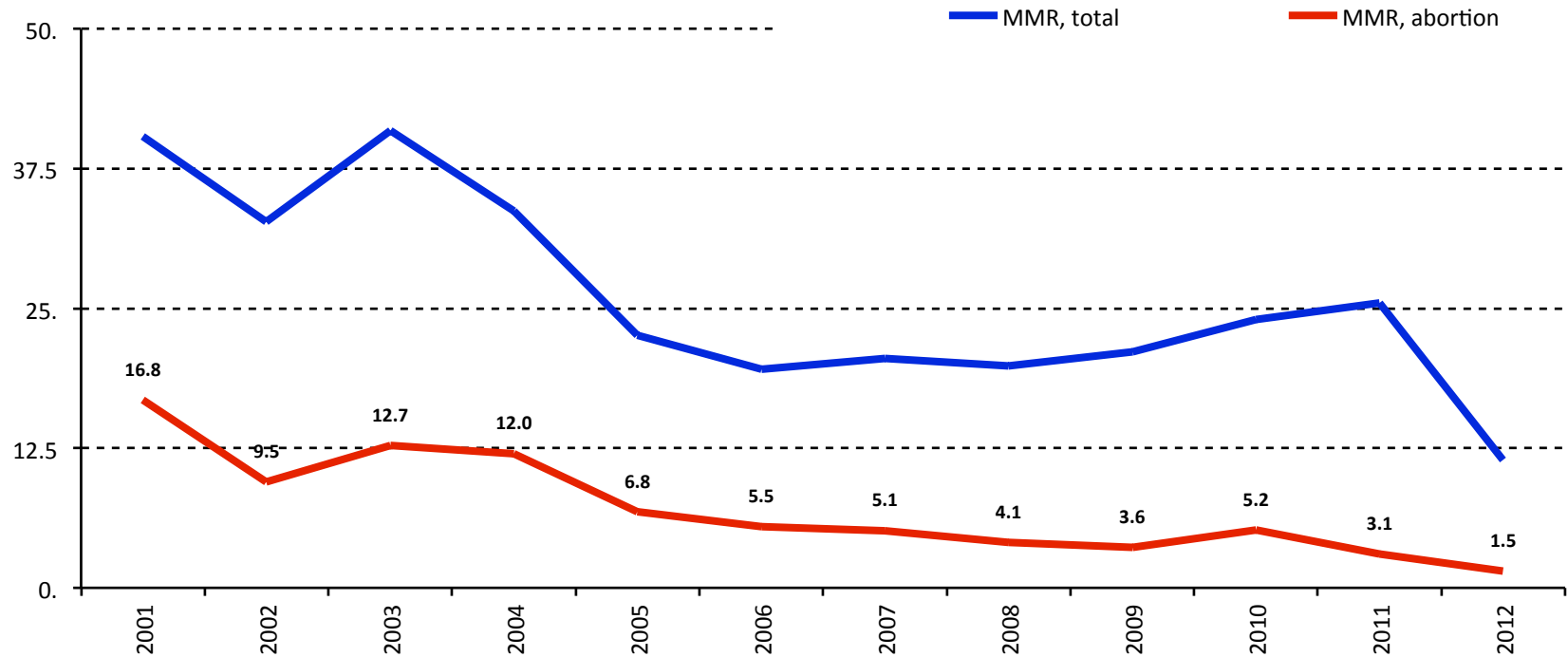
(2004 RHS, 2010 World Vision)



MATERNAL MORTALITY IN WORLD BANK, AND UNITED NATIONS POPULATION DIVISION MATERNAL MORTALITY ESTIMATION INTER-AGENCY GROUP



MATERNAL MORTALITY RATIO, ROMANIA 2001-2012 (MATERNAL DEATHS/100.000 LIVE BIRTHS)



ROMANIA: MATERNAL MORTALITY 1990-2013

Maternal mortality in 1990-2013

WHO, UNICEF, UNFPA, The World Bank, and United Nations Population Division Maternal Mortality
Romania

Year	Maternal mortality ratio (MMR) Per 100,000 live births (lb)	Maternal deaths Numbers	Number of AIDS related indirect maternal deaths Number
2013	33 (26-44)	75	0
2005	30 (26-35)	66	0
2000	53 (46-62)	120	0
1995	72 (63-84)	180	0
1990	170 (150-200)	550	0
Actual Change			
1990-2000	-11		
2000-2013	-3.6		
1990-2013	-6.9		

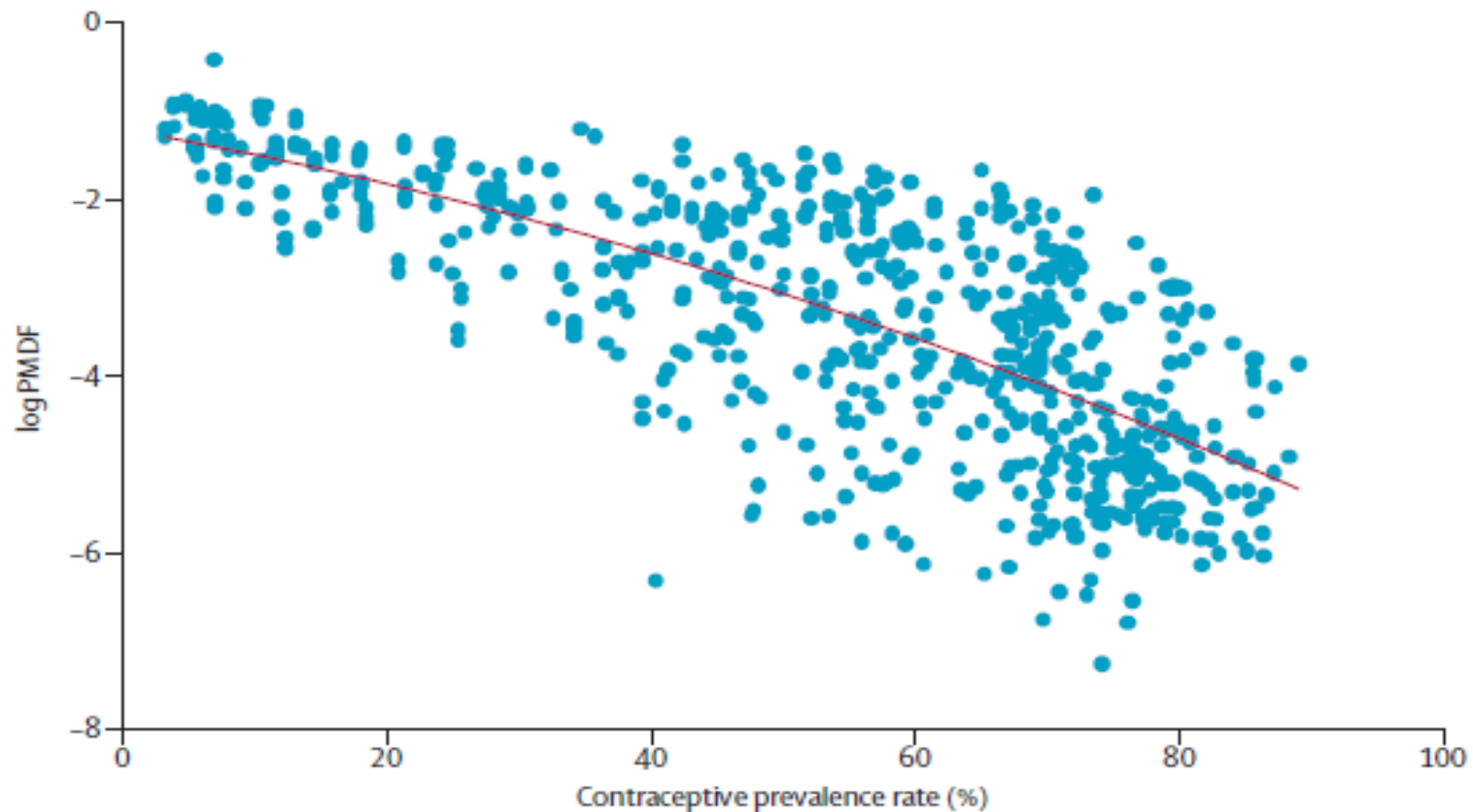
*World population prospects: the 2012 revision, New York, Population Division, Department of Economic and Social Affairs, United Nations Secretariat

SHIFTING FROM ABORTION TO CONTRACEPTION

Seven years after donors' withdrawal:

- A sustainable decline of maternal mortality ratio from 52 per 100,000 death/live births in 2000 to 21.1 per 100,000 during 2008-2012
- A continuous decline of abortion ratio from 1.11 abortions/live birth (1999), 0.88 abortions/live birth (2004), and eventually to 0.44 abortions/live birth in 2013, while fertility rate remained constant since 1999 (1.3-1.4 children/woman).
- Recent evidence suggests modern contraception use continues to increase among rural women.

MATERNAL DEATHS AVERTED BY INCREASING CONTRACEPTIVE USE



Source: Dr. Saifuddin Ahmed, et al. Lancet 2012

MATERNAL DEATHS AVERTED BY CONTRACEPTIVE USE

	Maternal mortality ratio*	Contraceptive prevalence rate (%)	Maternal deaths	Maternal deaths averted by contraceptive use (uncertainty range†)	Proportion of maternal deaths averted by contraceptive use (%)
World	252	64.2	342 203	272 040 (127 937-407 134)	44.3
Developed regions	10	75.0	1038	1578 (661-2502)	60.3
Developing regions	273	62.9	341 165	270 461 (127 249-404 629)	44.2
Africa	542	29.1	191 207	92 652 (45 668-133 675)	32.7
North Africa	86	61.6	3145	4426 (2005-6819)	58.5
Sub-Saharan Africa	596	22.1	188 062	88 227 (43 663-126 856)	31.9

Source: Dr. Saifuddin Ahmed, et al. Lancet 2012

CONCLUSIONS

- Strong political commitment and ownership
- Enabling policies; PPFP and PAC
- Include FP at every interaction; client provider, integration
- Include FP as part of the essential package of PHC services
- Pro-poor policies, addressing inequalities

Thank you, Gracias!
