

innovating to save lives



an affiliate of Johns Hopkins University



Primary Care of the Pregnant Woman in High Burden Infectious Disease Settings: The Kenya Example

Presenter: Mildred Mudany, MD, PhD
Ag. Country Director Jhpiego, Kenya

18th October 2015

Presentation Outline

- Background
- Primary Care of the Pregnant Woman
- Infectious Diseases
- Jhpiego results
- MNH/FP Innovative Approaches
- Acknowledgement



Background

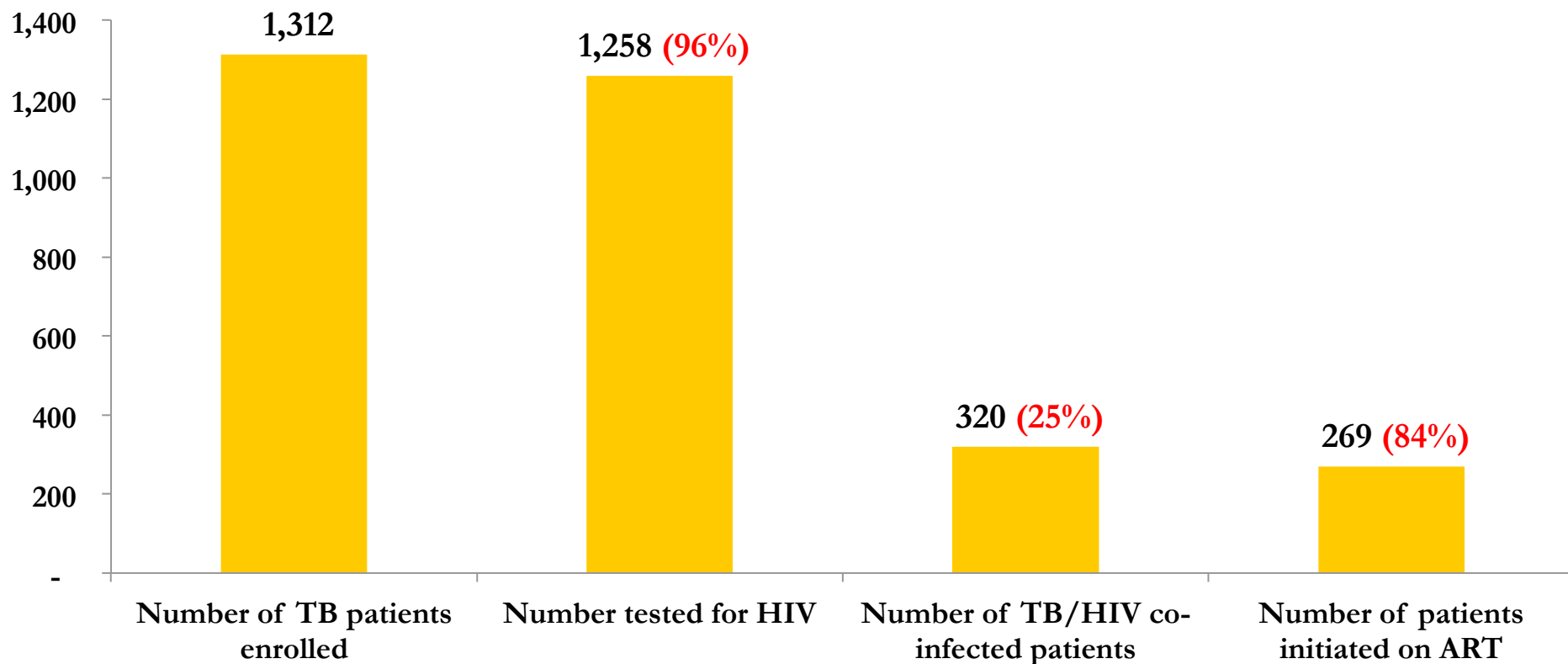
- Population estimates 43 million (KNBS 2014)
- Number of pregnancies per year: 1,500,000
- **Malaria** parasite prevalence rate is 4.3% in Coast endemic and 38.1% Lake endemic zone. Epidemic prone Western Highlands during rainy seasons prev. is 3.3%
- **HIV** prevalence among women of reproductive age dropped from 8.5% in 2007 to 6.9% (KAIS 2012)
- **TB** prevalence nationally is 210/100,000, TB Mortality (including HIV+) is 20/100,000 (MOH 2013)



Primary Care of the Pregnant Woman

- Focused ANC within **MCH** with integration of services:
 - Health education with emphasis on 4 ANC visits and SBA
 - Counselling on FP, Nutrition, EBF
 - ANC Profile: Screen for Syphilis, urinalysis, HB, Blood group
- eMTCT: C&T, HAART for positive mothers & infants, EID
- Malaria Prophylaxis: ITNs, IPTp
- TB Screening and contact tracing
- CHVs: provide health education at community level

Immediate ART for TB/HIV co-infected clients (Jan-Mar 2014)



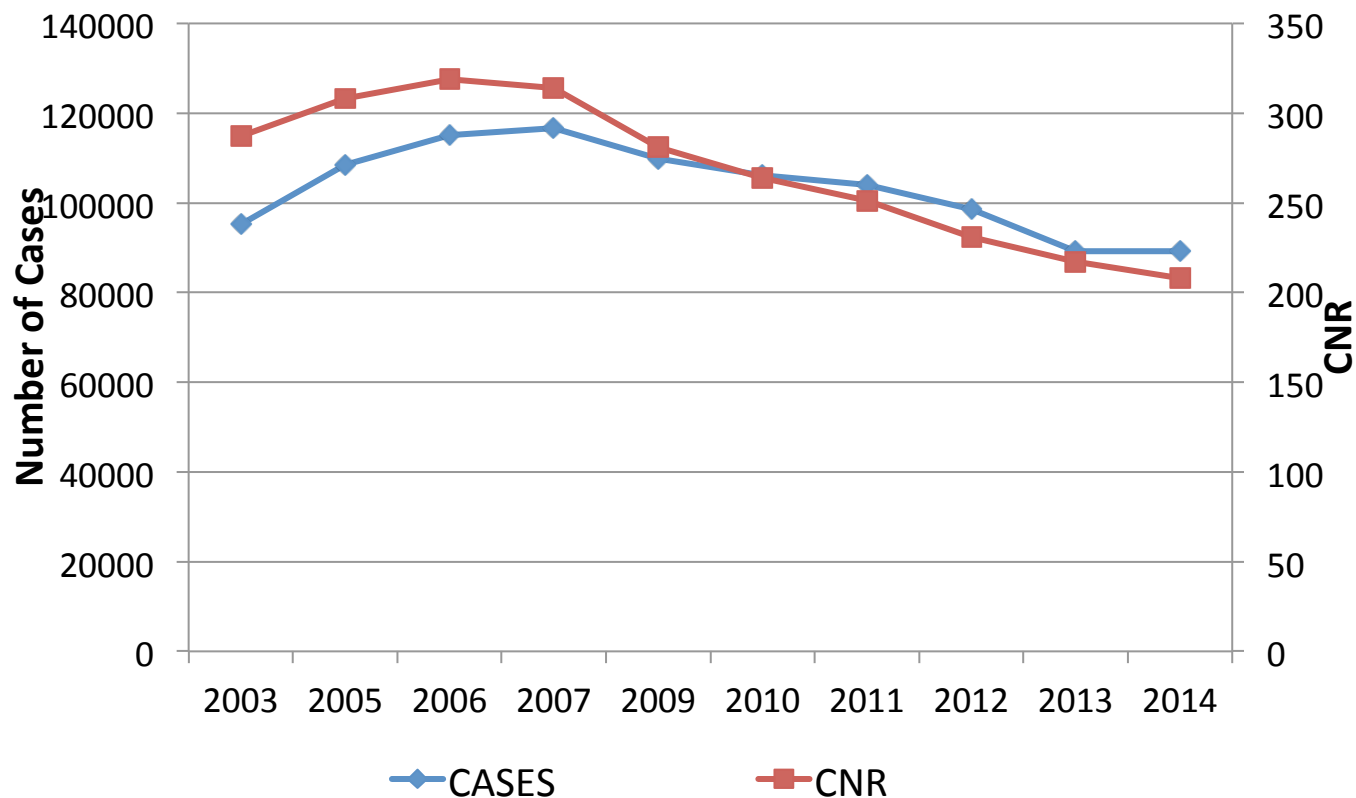
Source: TIBU System

TB/HIV Areas of Focus

- Integration of TB and HIV services
- Intensified TB case finding
- Immediate ART for TB/HIV co-infected clients
- Isoniazid preventive therapy
- TB infection control
- DR TB Surveillance
- Using GeneXpert



Number of Notified TB Cases & Case notification rate







Kenya Progress: Infectious Disease Control and Management

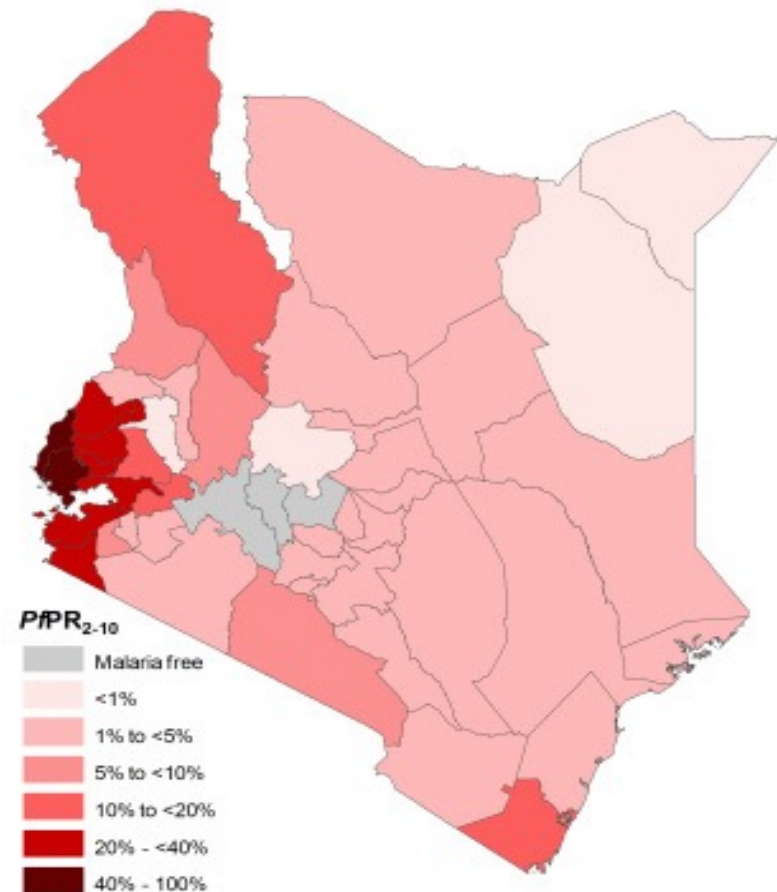
- In 2014, the tuberculosis treatment success rate was 88%; cure rate was 82%.
- 77% of households had at least one ITN (up from 56% in 2008)
- Malaria incidence dropped from 32% to 22%, while malaria deaths dropped from 100,000 to less than 65,000

** Health Sector Performance report, MOH, 2013-2014*



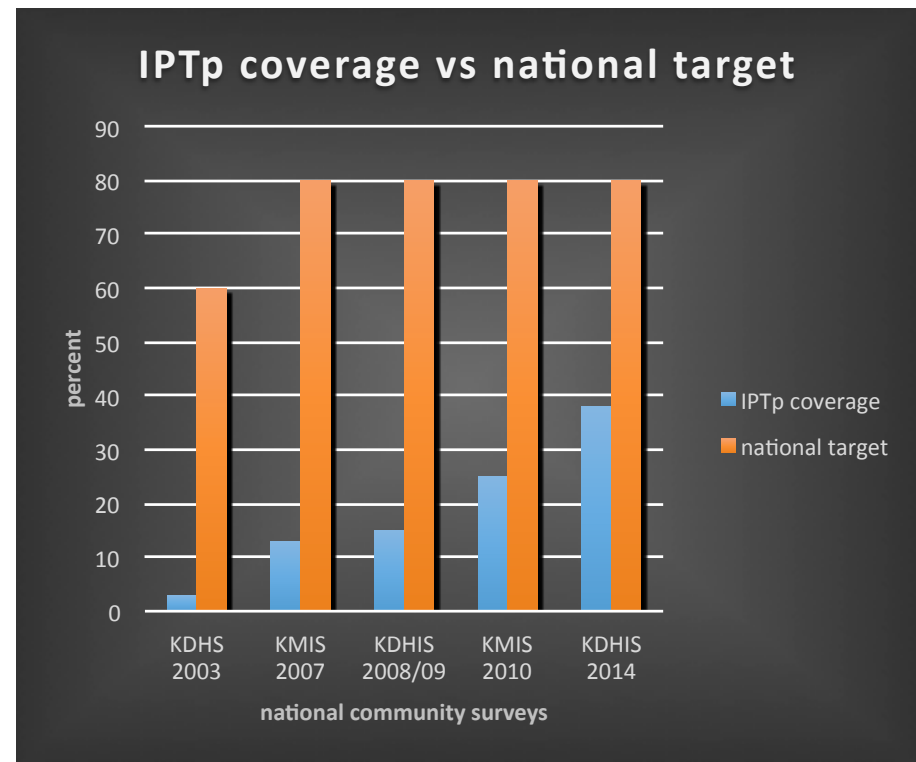
Malaria in pregnancy

- Malaria in pregnancy (MIP) is associated with poor pregnancy outcomes including
 - Maternal anemia, miscarriages
 - Intra-uterine growth retardation, Peri-natal mortality
- The IPTp intervention is implemented in malaria endemic counties
 - Lake endemic
 - Coastal endemic

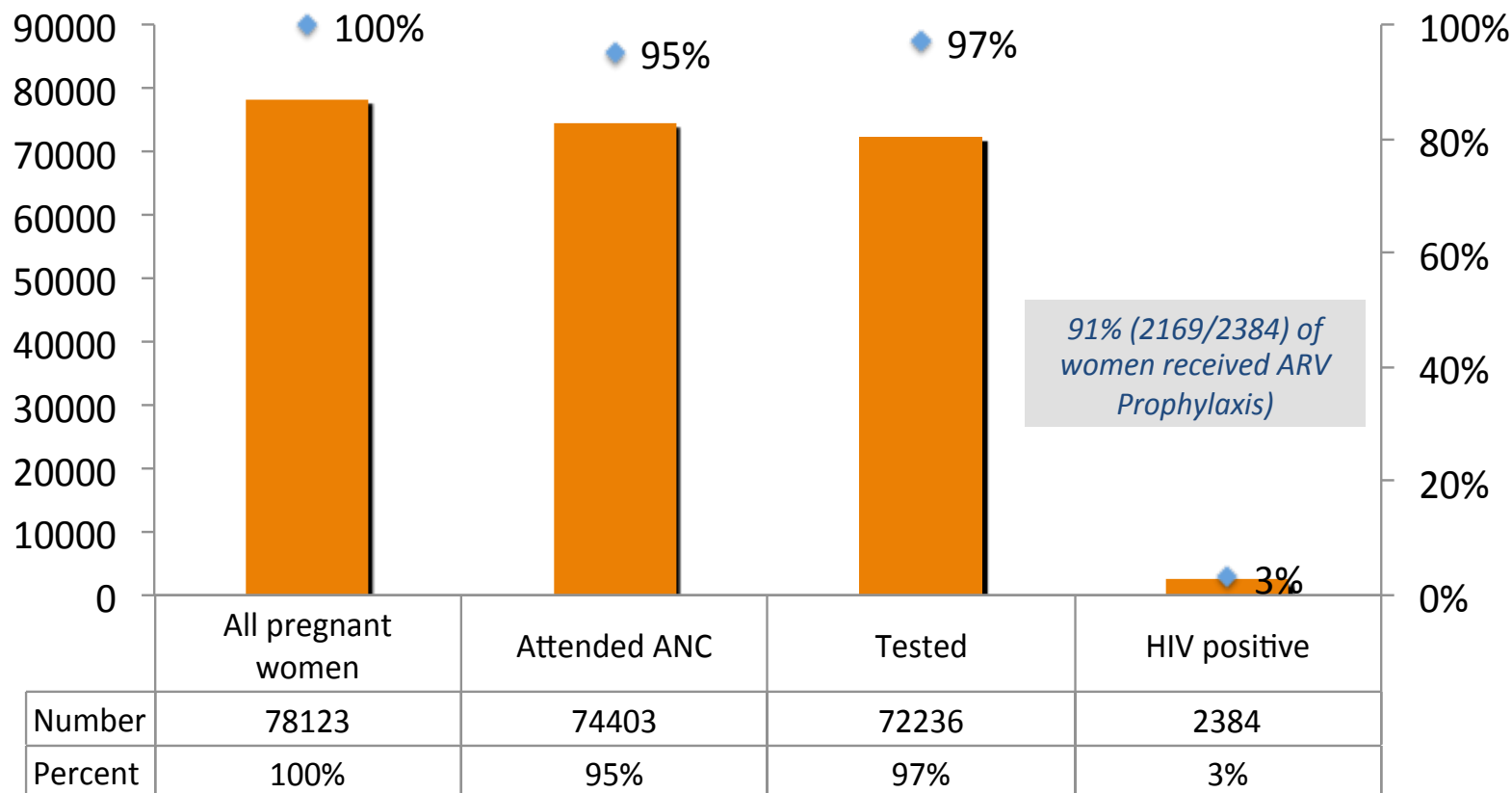


IPTp coverage in Kenya

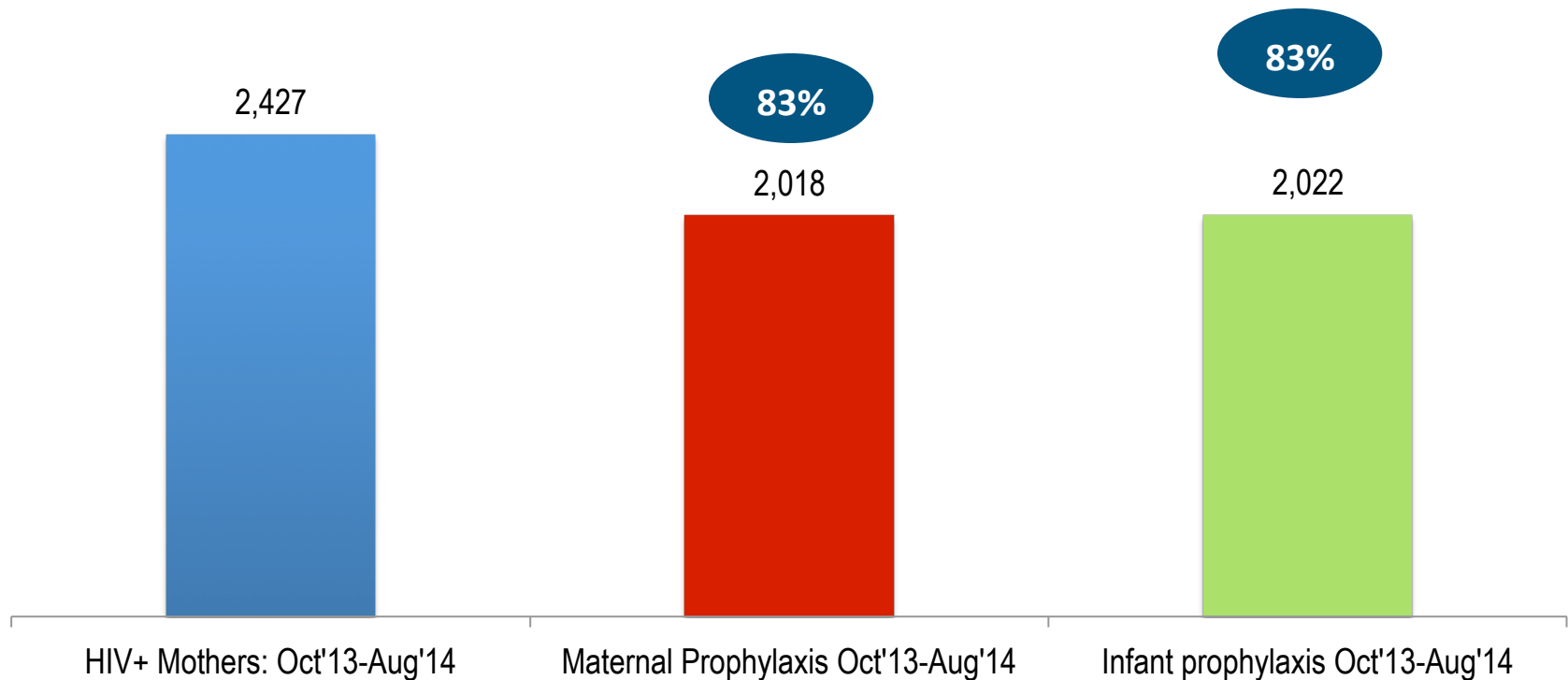
- Kenya adopted use of IPTp-SP in 1998 but IPTp coverage has remained below national target
 - IPTp2 – 4% (KDHS 2003)
 - IPTp2 – 13% (KMIS 2007)
 - IPTp2 – 15% (KDHS 2008-09)
 - IPTp2 – 25% (KMIS 2010)
 - IPTP2 – 38% (KDHS 2014)
- Kenya has adopted the community strategy to sensitize pregnant women to start early ANC attendance



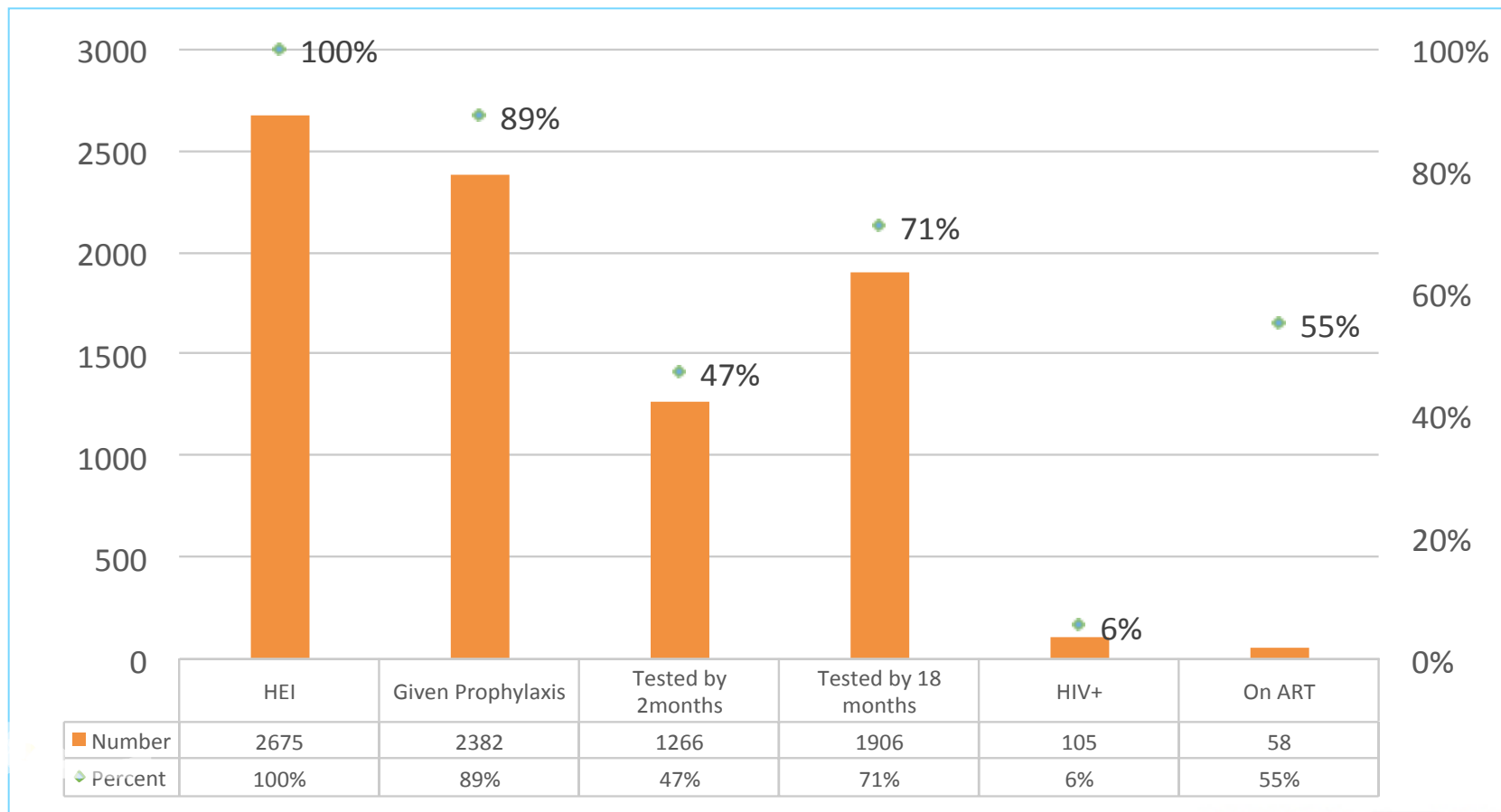
Jhpiego 2014: eMTCT



Positive vs. Maternal and Infant Prophylaxis



Jhpiego 2014: PMTCT Cascade - Infant



MNH/FP Innovative Approaches

- **ANC mothers clubs:** Mothers meet at health facility, receive health talks by the HCWs then transition to breastfeeding clubs after delivery. This empowers them with knowledge to demand for various services
- **Mentor Mothers and PMTCT support groups:** Address psychosocial support: retention of mother-baby pair in care and follow-up
- **Integrated MNCH/FP outreaches:** Targeting the hard to reach areas, reaching marginalized communities with quality services





Acknowledgement

- PEPFAR
- USAID
- Ministry of Health, Kenya
- Implementing Partners
- Kenya's First Lady
- Jhpiego Leadership



USAID
FROM THE AMERICAN PEOPLE



innovating to save lives
Jhpiego
an affiliate of Johns Hopkins University