



FACETS

Fostering Advancement & Careers
through Enrichment Training in Science

Summer 2022



HARVARD
T.H. CHAN

SCHOOL OF PUBLIC HEALTH



A Message from the Chief Diversity, Inclusion and Belonging Officer

Hello,

Of the many initiatives and programs offered through the Office of Diversity and Inclusion, the Fostering Advancement & Careers through Enrichment Training in Science summer Program, also known as the FACETS Summer Program, is one of our points of pride at the Harvard Chan School. For years, this program has served students from backgrounds under-represented in public health. And every so often, I am reminded of this program's impact when I come across Harvard Chan students and alumni who talk about the great experiences they had as FACETS summer program participants once upon a time.

Representation in the field of public health is critical for us, and an ongoing pursuit for us at the Harvard T. H. Chan School of Public Health is to find ways to increase diversity within all levels of the public health teaching, research, and scholarship community. And to do so, requires more than just opening our doors and waiting for students to come to us. We need multiple approaches that increase access to the public health profession—and it starts with increasing access to public health training and education.

Our summer programs for undergraduate students from communities that are historically under-represented and that were historically excluded from higher education in the United States, is one of the proactive steps we are taking when it comes to increasing representation. Our summer program is designed to intentionally offer a six-week interdisciplinary and research-intensive summer experience. And in building such pathway programs, relationships and communities of support are an essential ingredient, which is why our program provides participants with access to not only course instructors, but also faculty mentors, student group leaders from the Harvard Chan community, as well as professional staff from our office.

As we continue to plan for future years and find new ways to be innovative, we encourage the many undergraduate students who are considering the public health profession to engage with us to learn more about our summer program and what it can offer. Through intentional efforts such as our summer pathway and research programs, we can help shape the future leadership of public health- and it starts with engaging the next generation early.

Sincerely,

A handwritten signature in black ink, appearing to read "A. Barbosa". The signature is fluid and cursive, with a long horizontal stroke at the end.

Amarildo "Lilu" Barbosa | he/him/his
Chief Diversity, Inclusion & Belonging Officer
Office of Diversity & Inclusion

Mission of FACETS

Fostering Advancement & Careers through Enrichment Training in Science (FACETS) is a six-week, virtual, interdisciplinary, research-intensive summer program hosted by The Office of Diversity and Inclusion within the Harvard T.H. Chan School of Public Health. FACETS offers a cadre of coursework, professional development, and networking opportunities to increase participants' competitiveness for graduate school admission.

FACETS program participants are paired with a research mentor and graduate student mentor to help them navigate research topics in the field of public health. Specifically, participants engage in coursework focusing on, social and behavioral sciences, global health and population, environmental science and career navigation.

Research Mentors



Dr. Brittney N. Butler

Social Epidemiologist who holds a dual postdoctoral fellowship with the FXB Center for Health and Human Rights and the Center for Population and Developmental Studies at Harvard University

Dr. Brittney N. Butler (she/her) is a social epidemiologist deeply committed to fighting for health equity. She currently holds a dual postdoctoral fellowship with the FXB Center for Health and Human Rights and the Center for Population and Developmental Studies at Harvard University. Dr. Butler's primary research seeks to understand how anti-Black structural racism creates neighborhood level inequalities and how exposure to these inequalities over the life course are a driver of racial disparities in maternal morbidity and mortality for Black women. In addition to her academic research, she serves as the President of the Society of Analysis of African American Public Health Issues (SAAPHI). Dr. Butler received her PhD in Epidemiology from Ohio State University, her Master of Public Health from Washington University in St. Louis and bachelor's in biology from University of Miami and is an alumnus of the RWJF Health Policy Research Scholars Program.



Dr. Tamarra James-Todd

Epidemiologist working in collaboration with the Joslin Diabetes Center and Brigham and Women's Hospital

As an epidemiologist, my research takes a three-way approach to studying and improving women's reproductive and long-term health by: 1) evaluating the role of environmental chemicals on adverse maternal health outcomes; 2) assessing racial/ethnic disparities in environmental chemical exposures and adverse health outcomes; and 3) developing pregnancy and postpartum interventions to improve women's chronic disease risk.

Environmental Health and Pregnancy Complications. Everyday we are exposed to hundreds of chemicals that can affect our health. Over the course of our lives, these chemicals may have differing effects that could have a greater impact on our health during certain critical and sensitive windows. Furthermore, certain populations, such as women and minorities have higher exposure levels of certain types of chemicals. My research focuses on the role of environmental endocrine disrupting chemicals in pregnancy and their effect on a number of relevant pregnancy complications.

Racial Disparities in Environmental Health. A related area of research focuses on racial/ethnic differences in environmental chemical exposures and their contribution to disparities in chronic disease risk. For this, I evaluate both non-pregnant and pregnant populations and assess sources of exposures to certain types of environmental endocrine disrupting chemicals. This work has led me to explore the role of black hair care products on risk of certain conditions, such as early age at menarche, as well as other personal care products that contain environmental endocrine disrupting chemicals.

Translational Research in Diabetes and Pregnancy. In collaboration with the Joslin Diabetes Center and Brigham and Women's Hospital, I work on identifying reproductive risk factors of subsequent development of type 2 diabetes and its complications. For this, I have assessed the effect of preterm birth on future development of type 2 diabetes in large cohort studies, including the Nurses' Health Study II and the Black Women's Health Study. I have also designed a number of interventions to reduce future risk of developing type 2 diabetes in women following a pregnancy complicated by gestational diabetes. I also conduct translational research in pregnant women with type 1 diabetes. For this work, I published one of the first studies documenting a rapid decline in blood glucose control during the postpartum period in women with type 1 diabetes, despite excellent blood glucose control during pregnancy. This work has major implications for a woman's future risk of diabetes complications.

Research Mentors



Dr. Winnie Yip

Professor of the Practice of Global Health Policy and Economics in the Department of Global Health and Population at the Harvard T.H. Chan School of Public Health and Director of the school wide China Health Partnership

Dr. Winnie Yip is Professor of the Practice of Global Health Policy and Economics in the Department of Global Health and Population at the Harvard T.H. Chan School of Public Health and also Director of the school wide China Health Partnership. Dr. Yip was previously a Professor of Health Policy and Economics at the Blavatnik School of Government, University of Oxford, and Senior Research Fellow of Green Templeton College, Oxford, where she was director of the Global Health Policy Program.

Dr. Yip holds a PhD in Economics from the Massachusetts Institute of Technology. Her research focuses on: 1) the design, implementation and evaluation of systemic health care interventions, for improving affordable and equitable access to and the efficiency and quality of health care delivery, especially for the poor; 2) modeling and evaluating the effects of incentives on the behavior of providers (organization and individual) and patients.

Yip's research encompasses both why health systems fail and how to improve them for the benefit of the people they serve. Her approach typically involves large-scale social experimentation of health system interventions by using experimental design to integrate the transformation of financing, incentives, organization and management. With a network of Chinese universities, Dr. Yip's ongoing research projects cover over 25 million people in the low income provinces in China.

Yip often works in close collaboration with governments and she has extensive experience leading interdisciplinary teams with expertise in public health, economics, political economy, evaluation science, epidemiology, quality of care, marketing science, and management.

In addition to China, Dr. Yip has studied and advised health care reforms in the wider Asia region, including Hong Kong, Taiwan, India, Thailand, Malaysia, Vietnam, and she has extensive experience in executive training courses for senior health policymakers. She was the founding director of the Asia Network for Health System Strengthening.

Dr. Yip has served as an adviser to many international agencies, including the World Bank and the World Health Organization, and notably to the most recent World Bank's Healthy China study that top Chinese leaders have accepted into their next Five Year Plan on Health. She has also been a member of the Sustainable Development Solutions Network and the National Academy of Medicine's Standing Committee on Health Systems Strengthening. She is a Senior Editor of Social Science and Medicine (Health Policy editorial office), Associate Editor of Health Economics and Health Systems & Reform and serves on the editorial board for several other health policy publications.

Dr. Yip has published extensively in top policy and economics journals, such as the Lancet, Health Economics. Her work has been funded by the National Science Foundation, the Bill and Melinda Gates Foundation, the Health Result Innovation Trust Fund (HRITF) of the World Bank, the European Union Commission, the Economics and Social Science Research Council.

Course Instructors



Sheila Krishnan

Director of Career and Professional Development

Sheila provides career guidance to students of all backgrounds with a focus on public health, non-profit and social science research organizations. She helps students in all aspects of career development including career exploration, job search strategy, networking, interview preparation and salary negotiation. Sheila has an MPH from the University of Michigan in Health Behavior and Health Education and prior experience working in chronic disease research, college health, suicide prevention and mental health promotion.



Alison McAlear

Assistant Director, Career Coaching and Education

Alison focuses on career coaching and education for students and alumni. She has expertise in guiding candidates through the job search process and developing career programming that helps students and alumni build professional competencies to support their individual career goals. Before coming to Harvard Chan, Alison worked in corporate recruiting and employee training and development, and spent over eight years in graduate admissions at Boston-area universities. She has a BA in English Literature from Smith College and a MS in Communications Management from Simmons University.



Dr. Cassandra Okechukwu

Adjunct Associate Professor in the Department of Social and Behavioral Sciences at Harvard TH Chan School of Public Health and Principal Life and Health Scientist at The MITRE Corporation

Dr. Cassandra Adiba Okechukwu is an Adjunct Associate Professor [Links to an external site.](#) in the Department of Social and Behavioral Sciences at Harvard TH Chan School of Public Health and Principal Life and Health Scientist ([Links to an external site.](#)) at The MITRE Corporation. A social epidemiologist, Dr. Okechukwu is passionate about helping our nation achieve health equity ([Links to an external site.](#)). Her body of work focuses on using latest advances in social and behavioral sciences and technology to understand and redress health inequities and promote population health. She is a subject matter expert on social determinants of health, qualitative and quantitative research methods, health equity, and community needs assessment, and has worked on substance abuse, mental health, HIV/AIDS, occupational health, and cancer prevention. Dr. Okechukwu has chaired or served on several advisory boards for the National Institutes of Health and Centers for Disease Control and Prevention.

Dr. Okechukwu's work in nursing homes is inspired by the four years she spent as part of the low-wage and mostly immigrant nursing home workforce. She received the James Zimmer New Investigator Research Award by the Aging and Public Health section of the American Public Health Association and the best paper by junior faculty award by the International Conference on Work and Family in Barcelona. In addition, she is a member of the team that received the 2015 Rosabeth Moss Kanter Award for Excellence in Work-Family Research, an international award recognizing the best work-family paper globally.

She earned a bachelor's degree in nursing from the University of Maryland, Baltimore, and master in nursing and master of public health degrees from the Johns Hopkins School of Nursing and the Bloomberg School of Public Health, respectively. She also earned a Doctor of Science degree from Harvard T.H. Chan School of Public Health and completed postdoctoral training as a Robert Wood Johnson Health and Society Scholar at University of California, San Francisco and Berkeley.

Course Instructors



Dr. Marie V. Plaisime

National Science Foundation and Health & Human Rights postdoctoral fellow at Harvard University

Dr. Marie Plaisime is an FXB Health and Human Rights Fellow and National Science Foundation (NSF) post-doctoral fellow. Her research investigates racial bias training in medical education and clinical practice, race-based medicine, algorithmic bias, and health policy. She applies critical quantitative, computational, & mixed methodologies to detect, examine, and quantify how structural racism in medicine jeopardizes healthcare delivery, access, and quality.

She completed her PhD in Medical Sociology at Howard University and is a Robert Wood Johnson Foundation (RWJF) Health Policy Research Scholar (HPRS). Her professional experiences include research at the Association of American Medical Colleges (AAMC), National Institutes of Health (NIH), and the Department of Health and Human Services (HHS). Marie received her MPH from the Drexel University Dornsife School of Public Health.

Group Leaders



Evelin Garcia

SM-80 student in the Department of Global Health & Population

Evelin is an SM-80 student in the Department of Global Health & Population concentrating in Infectious Disease Epidemiology. She was born in Mexico City and immigrated to Danbury, CT at a young age. Evelin graduated summa cum laude from Western Connecticut State University with a degree in Biology and Community Health. Before graduate school, she worked on an NIH-funded obesity intervention targeting low-income preschool-aged children and families in the Greater Boston area. She is interested in understanding and addressing the upstream determinants of health disparities among Latinx immigrant/undocumented communities and other marginalized groups.



Lisette Martínez

Recent MS graduate of the Harvard School of Public Health in the Department of Global Health & Population

Lisette is a recent graduate of the Harvard School of Public Health, where she obtained her Masters of Science in Global Health and Population. During her time at the Chan school, she has worked on projects relating to reproductive health outcomes for populations in Monterrey, Mexico, and Lilongwe, Malawi. Lisette is committed to advancing equity for historically marginalized populations and approaches her work with a decolonial framework. In her free time, she enjoys reading and spending time outdoors.



Seblewongel (Seble) Yigletu

Second-year SM2 student in the Department of Epidemiology

Seblewongel (Seble) is a second-year SM2 student in the Department of Epidemiology. Originally from Milwaukee, she is a recent graduate of Tufts University. At Harvard Chan, Seble is interested in maternal/child health in low-resource settings and health disparities. Outside of class, she is an avid runner and enjoys listening to podcasts. She looks forward to building community with her cohort of EDI Fellows and working to make Harvard Chan a more inclusive and welcoming environment.

Alumni Panelists



Sneha Dave

FACETS Alum, 2019

Sneha Dave graduated from Indiana University in May 2020 where she majored in chronic illness advocacy as well as journalism. She created Generation Patient and its program the Crohn's and Colitis Young Adults Network (CCYAN) to create support systems for adolescents and young adults with chronic medical disabilities across the U.S. and internationally. She is proud to work with a team composed entirely of young adults with chronic medical disabilities and also to keep Generation Patient and CCYAN independent from the pharmaceutical and insurance industries. She has also interned at numerous places such as the Harvard T.H. Chan School of Public Health and Pfizer in health economics and outcomes research for Inflammation and Immunology. Sneha has spoken on Capitol Hill, featured nationally on C-SPAN, and is a past contributor for U.S. News and World Report. She has served on the Democratic National Committee Disability Policy Subcommittee and recently joined the Midwest Comparative Effectiveness Public Advisory Council, an independent appraisal committee of the Institute for Clinical and Economic Review. She also serves on the FDA Patient Engagement Collaborative and in a grantmaking capacity with the Robert Wood Johnson Foundation. Sneha was awarded two academic fellowships with the Association of Health Care Journalists. Sneha has spoken at the Democratic National Convention, Stanford Medicine X, the National Academies of Medicine, and other major avenues. For her work, Sneha was selected as one of the most influential teenagers in 2018 by the We Are Family Foundation and was recognized as an American Association of People with Disabilities Emerging Leader in 2020.



Chinelo Njubigo

Summer Program in Epidemiology Alum, 2019

Chinelo Njubigo is a second-year graduate student at the Harvard T.H. Chan School of Public Health studying Epidemiology with a focus on reproductive health. She recently graduated from Wayne State University with a bachelor's degree in Public Health and a minor in global studies. During undergrad, she became a scholar in both the National Institutes of Health (NIH) Building Infrastructure Leading to Diversity (BUILD) and Ronald E. McNair Scholar programs, which are designed to prepare underrepresented students for doctoral study. As a result, Chinelo has engaged in multiple research projects that have involved community outreach, program development, and data analysis. Currently, Chinelo is working at Brown University on a project examining how discrimination affects reproductive health care in Black sexual minority women. She also works at Johnson & Johnson as a Global Market Access summer intern. In her free time, Chinelo enjoys listening to podcasts, visiting museums, and exploring new places with her friends.



Jeffrey Okewunmi

Summer Program in Biostatistics and Computational Biology Alum, 2019

Jeffrey is from Houston, TX and is currently a fourth year medical student at the Icahn School of Medicine at Mount Sinai in New York City applying to residency in orthopaedic surgery this upcoming year. In medical school, Jeffrey has been active in research, applying many of the skills he learned from this program!

Alumni Panelists



Carson Peters, MPH

Summer Program in Epidemiology Alum, 2019

Carson is a social epidemiologist with a focus on global infectious diseases, health equity, and community engagement. Carson graduated from Grinnell College with a Bachelor of Arts in the Biology of Global Health and a Master of Public Health in Epidemiology from the University of Iowa, College of Public Health. She is currently a second-year Ph.D. student in Behavioral Community Health at the University of Maryland, School of Public Health. While participating in the Summer Program in Epidemiology, her research focused on sexual and reproductive health, which recently resulted in her first publications. This is her third summer assisting with the Harvard School of Public Health summer programming. Carson has also worked at the Harvard Global Health Institute as a Research Assistant focused on engagement to care in the HIV continuum and is now a Project Manager at the National Institutes of Health focused on chronic disease management.



Sabrina Trombetta

Summer Program in Biostatistics and Computational Biology Alum, 2019

Sabrina (she/her) is a Business Analyst at McKinsey & Company. She graduated from Amherst College with a Bachelor of Arts in Sociology and a certificate in Culture, Health, and Science. While participating in the Summer Program in Biostatistics and Computational Biology in 2019, her research focused on the influence of race and gender on hiring of post-doctoral candidates in STEM.

2022 FACETS Cohort



Jade Bowers

Health Sciences, Spelman College

Jade Bowers is a rising senior Health Science major at Spelman College in Atlanta, Georgia. Her most recent research project includes extensive Breast Cancer research with Touch The Black Breast Cancer Alliance, and Jade also works as a patient care technician in the Orthopedics and Spinal Surgery unit of Emory University Hospital. Jade enjoys all fields of science and multiple topics of research and she is increasingly interested in maternal and child healthcare for future research projects. Outside of research and academics, Jade enjoys reading, occasional window shopping, and spending quality time with her family and friends. Jade is looking forward to pursuing an MPH and an MD after her graduation from Spelman College.



Sean Duclerc Rodas

Microbiology, University of Puerto Rico at Humacao

Sean Duclerc Rodas is a senior undergraduate student majoring in microbiology at the University of Puerto Rico at Humacao. He was born in Humacao and grew up in a small rural town called Barrio Tejas. During his time at the University of Puerto Rico, he has worked on a research project focused on artificial selection using statistical analysis, where he has gained a keen interest in biostatistics. He has shadowed three medical doctors, an experience that allowed him to deepen his understanding of medicine and community health. Sean is interested in pursuing an MD/Ph.D. in order to help socially and economically disadvantaged groups in Puerto Rico as a physician and a researcher.



Jacqueline "Jacky" Duong

Psychology, University of California, Berkeley

Jacky Duong is a rising senior at the University of California, Berkeley, where she studies psychology on the pre-nursing track. She is originally from the San Fernando Valley in Southern California and identifies as a first-generation low-income (FGLI) student and student of color.

At UC Berkeley, Jacky is a part-time lab manager and research assistant at the Clinical Research on Externalizing and Addiction Mechanisms (C.R.E.A.M.) Lab of Dr. Keanan Joyner. In this role, she focuses on understanding disturbances in cognitive-affective processes across time that gives rise to the emergence of substance use disorders (SUDs) and other forms of externalizing psychopathology.

As a FACETS intern, Jacky conducted environmental health research under the supervision of Dr. Tamarra James-Todd, an Environmental Reproductive Epidemiologist at HSPH, and Marissa Chan, a Ph.D. student at HSPH. In this project, she focused on examining the role that environmental health literacy plays in Vietnamese Nail Salon Workers in California and its relationship to disproportionate economic and health impacts from toxic exposures.

Jacky is passionate about diversity & inclusion and helping underserved communities overcome oppression to improve their wellbeing. To this end, Jacky is an administrative assistant for the Office for Graduate Diversity, a volunteer at the Bayview Pop-Up Village Health & Wellness Hood, and a COVID Response Swab Coach with the University Health Services (UHS) Tang Center, among other things.

After completing her undergraduate degree, Jacky hopes to pursue a Master's in Nursing (MSN) and/or a Master's in Public Health (MPH) to promote and protect the health and safety of communities through education, advocacy, and delivery of care. Outside of school and work, Jacky enjoys cardio, journaling, and spending time with her friends and family.

2022 FACETS Cohort



Yudiria Garcia

Public Health, Goshen College

Yudiria Garcia was born in Los Angeles California but for the past 6 years has been living in Goshen, Indiana. Yudiria is a first generation college student and soon to be graduate. In high school Yudiria did volunteer work in USC hospital. Yudiria is currently a Junior in Goshen College majoring in Public Health. Yudiria is interested in maternal and child health, particularly investigating environmental stressors after post-pregnancy. Yudiria has worked helping Elkhart county WIC mothers with the Elkhart health department.



Jasming Jones

Chemistry, Spelman College

Jasming Jones is a student in the FACETS program at the Harvard T.H Chan School of Public Health. Her research interests this summer were in partnership with the Reproductive Justice Lab; specifically, the upcoming RESTYLE study. The goals of the RESTYLE study are to examine the systemic drivers of hair product accessibility and retailer redlining in the Boston, MA area and its direct effect on person product care analysis. Jasming is a recent graduate of Spelman College where she obtained her Bachelor's in Science degrees in Chemistry. Her interests in community health equity and experience in quantitative learning research drive her to pursue a dual MD/ MPH degree in the upcoming years. Jasming is committed to improving medicine and access to healthcare, especially for people of color.



Alan Levita

Cognitive Science, Rutgers University-New Brunswick

Alan Levita is currently a rising Junior at Rutgers University-New Brunswick, where he is part of the School of Arts & Sciences Honors Program and currently majoring in Cognitive Science. His research interests include the intersection between mental and public health, with a particular focus on the role of the environment on intergenerational trauma. In the past, Alan has had experience working in research labs, particularly in a medicinal chemistry lab throughout high school, and as ecology lab assistant during college, assisting PhD research in regards to bee migration and pollination patterns. Currently, he is actively working with Dr. Brittany Butler at the Harvard T.H. Chan School of Public Health, where he hopes to analyze the role that intergenerational trauma plays in post-war former Yugoslavia. Besides his academic interests, Alan is currently a volunteer at his local EMS Rescue Squad, where he hopes to earn his EMT license soon. Additionally, he likes to go cycling, binge Netflix shows, and play chess in his free time.

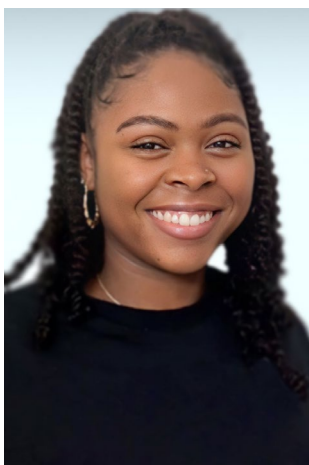
2022 FACETS Cohort



Ambree Robinson

Health Science, Spelman College

Ambree Robinson is a Mississippi native that has recently moved to Allentown, Pennsylvania. She started her professional journey with her acceptance into Spelman College in 2020, where she majored in Health Science and is now a junior. At Spelman, she is a member of the Ethel Waddell Githii Honors Program and the Alpha Lambda Delta Honor Society. She engages in a number of leadership positions such as Secretary to the Pre-Physician Assistant Association, and Co-Community Service Chair in the Honors Program Student Association Executive Board, and Publicity Chair of the Health Careers Club. Additionally, she was one of twenty inaugural recipients of the Dovey Johnson Roundtree Scholarship for her dedication to community service and academia. She has developed an interest in women's health, sexual and reproductive health, and investigating bias that marginalized communities face in the medical field. In her free time, she enjoys journaling and playing video games.



Kayla Smith-Petty

Chemistry, Clark Atlanta University

Originally from Inglewood, California, Kayla Smith-Petty is a rising senior at Clark Atlanta University where she studies chemistry with a minor in criminology. Her research interests include the development of crystalline porous materials including metal-organic frameworks (MOFs) and covalent organic frameworks (COFs) as well as green synthesis of crystalline porous materials. Kayla is also a member of Undergraduate Health Sciences Academy at Morehouse School of Medicine, UHSA, where she learns about the different possibilities in the healthcare field, connect with mentors, gain new resources, and prepare for her career after high school.

Growing up as a Girl Scout taught her the importance of giving back to her community. Kayla enjoys volunteering at summer camps, beach clean ups, and teaching basketball to the youth at her local park. She finds it fun to do the things she enjoys while helping others.

As a FACETS student, Kayla conducted research on how genetic biomarker effects breast cancer under the mentorship of Brittney Butler. After completing her undergraduate degree, Kayla intends to continue maximizing the impact of her advocacy and research by pursuing a PharmD degree and becoming a pharmacist. She hopes to engage in drug development research in both lab and clinical settings, and eventually open her own practice.

In her spare time, Kayla enjoys spending time with family and friends, playing basketball, participating in pageants, traveling, and shopping.



Lena Solomon

Public Health, Simmons University

Lena Solomon is a rising senior at Simmons University that is currently pursuing a bachelor's degree in public health. She was born and raised in Cambridge, MA. Her research interests are in health disparities, epidemiology and maternal/child health. As a sophomore at Simmons University, Lena created, designed and proposed a cluster of three courses titled "The Mistreatment of African Americans and Minorities in Healthcare" and was honored with the *3D Award for exemplary student work in Design Across Diverse Disciplines*. Lena has also volunteered with The Family Van as a part of their Research and Advocacy team. She was involved with developing data for the Mobile Health Map.

As a participant of the FACETS program, she is working under the mentorship of Dr. Winnie Yip and Dr. Bijetri Bose from the Department of Global Health and Population at the Harvard T.H. Chan School, to conduct a research project on maternal and child health disparities in India. The research will specifically tackle the connection between maternal education and child vaccination rates. During her free time Lena enjoys baking and watching Netflix shows.

Office of Diversity and Inclusion



Amarildo "Lilu" Barbosa

Chief Diversity, Inclusion, and Belonging Officer

Lilu Barbosa joined the Harvard Chan School in June 2020 as Chief Diversity, Inclusion, and Belonging Officer. Previously, Lili was Chief Diversity Officer at Lesley University; prior to that, he served as director of the Office of Multicultural Affairs and Student Inclusion. He has experience in the higher education and nonprofit sectors over the past decade, with interests in diversity and multicultural affairs, residential education, and academic support. He holds certifications in restorative justice, social justice conflict mediation, and areas of bias response, and is licensed as an Intercultural Developmental Inventory (IDI) Qualifying Administrator.

As Chief Diversity, Inclusion, and Belonging Officer, Lili plays a pivotal role in ensuring a diverse, equitable, and inclusive environment for students, faculty, and staff at the Harvard Chan School, leading the Office of Diversity and Inclusion (ODI) as well as the Dean's Advisory Committee on Diversity and Inclusion (DACDI). His duties include vision development; strategic and resource planning, reporting, policy and practice development; prioritization around efforts such as recruitment, retention, staff, faculty, and student development; and expanding and deepening discussions about diversity, inclusion, and related issues in the curriculum. He also collaborates across the University to learn and share best practices, serving as an advisor to create a more vibrant and supportive campus climate for all members of our community.

Lilu holds a bachelor of science in business administration and marketing, and a master of education in higher education and student affairs administration, both from the University of Vermont. He is currently a PhD candidate in the Human Development and Leadership program at Lesley University, where his research focuses on strategic diversity leadership, professional development, and organizational learning and capacity-building.



Jennifer Castro

Director of Strategic Projects and Diversity Education

The newest member of the ODI team, Jennifer Castro is proud to have grown up in Providence, Rhode Island, as the daughter of immigrants from the Dominican Republic. Her life has been shaped by her experiences as a disabled woman of color of African descent. As she works to create equity in higher education, she calls on her experiences as a first-generation undergraduate, graduate, and now doctoral student.

Jennifer joins the Harvard Chan School from the Rhode Island School of Design, where she was associate director of intercultural learning and development and the coordinator for Project Thrive, a program for first-generation college students. Before that, Jennifer worked at Lesley University, where she served as director of multicultural affairs & student inclusion and assistant director of the Urban Scholars Initiative.

Jennifer's practice within higher education and student affairs focuses on the design and facilitation of social justice education, building critical consciousness in faculty, staff and students, and organizational development using equity and inclusion frameworks. She has provided services, training and consultation related to social identity, social justice, cultural diversity, and inclusion. In her new role at Harvard Chan School, Jennifer seeks to encourage cultural competence, community building, connecting across differences, coalition building, and solidarity.

Jennifer holds bachelor's and master's degrees in human development and family studies from the University of Rhode Island. She is currently pursuing her doctorate in education policy, organization, and leadership, with a focus on diversity and equity in education, at the University of Illinois Urbana-Champaign.

Office of Diversity and Inclusion



Erica L. Knight

Director, FACETS and Assistant Director of Student Diversity and Access Initiatives

Erica Knight joined the Office of Diversity and Inclusion in February 2021 as our Assistant Director of Student Diversity and Access Initiatives. She comes to the Harvard Chan School from The Graduate School at Northwestern University, where she served as Senior Program Coordinator in the Office of Diversity and Inclusion. A graduate of Clark Atlanta University, Erica is a collegiate student advocate whose experience in higher education spans enrollment management, student affairs, and graduate admissions. She has dedicated her career to diversifying advanced degree programs by establishing pipeline programs between minority-serving institutions and top-tier research institutions.

While at Northwestern, Erica oversaw the graduate peer mentoring program and graduate student retention efforts and assisted underrepresented populations throughout their scholastic graduate study journey. Before that, Erica managed professional development and career advancement programming for the James T. Laney Graduate School at Emory University and served as the administrator of graduate relations at Spelman College.

Erica is civically engaged and is an active member of the American Civil Liberties Union, Sigma Tau Delta National English Honor Society Alumni Epsilon Chapter, The National Urban League, Clark Atlanta University Alumni Association, and Delta Sigma Theta Sorority Incorporated, Evanston North Shore Alumni Chapter.

Erica has received several accolades for her humanitarian efforts and dedication to excellence, including the Power 30 Under 30 Award for the state of Georgia, Atlanta Black Girls Rock Award, Outstanding Black Alumni of the Year, inclusion in Cambridge's and Montclair's Who's Who Among Professionals and Executives, Soror Service with a Heart Award, and finalist in the L'Oreal Woman of Worth Award.



Manny Lim

Executive Assistant

Manuel (Manny) Lim has extensive experience in executive and administrative support and human resources in the nonprofit sector. He joined the Harvard Chan School in 2018 after working at the national headquarters of City Year, where he oversaw payroll and criminal background screening for their 3,000 AmeriCorps members in 29 cities. He has served on the Diversity and Inclusion Task Force for the Handel & Haydn Society, one of the country's oldest and most highly acclaimed musical organizations. A Chicago native, Manny holds a BA from the University of Detroit and a certificate in Human Resource Management from Emmanuel College.



Ra'Shaun Nalls

Director of Community Engagement

Ra'Shaun Nalls has worked with Boston-area community-based organizations for more than 15 years, with an emphasis on youth development and community organizing. He has been acknowledged for his community service by the Action for Boston Community Development (ABCD), the Boston Foundation, Boston Police Department, Suffolk County District Attorney's Office, and the Harvard Youth Violence Prevention Center. Prior to his work at Harvard Chan, Ra'Shaun was a program manager at the Boston Public Health Commission; a community coordinator at Project R.I.G.H.T.; and at Roxbury Youthworks as an advocate for young women under state custody and at high risk of sexual exploitation.

Ra'Shaun holds a Master in Public Administration and a Bachelor of Arts in Community Studies, both from the University of Massachusetts Boston.

Special Thanks:

Elizabeth Anderson

Assistant Director of Admissions

Brianne F. Brenneman

Assistant Professor of Public Health
Goshen College

Azariah A. Boyd

Research Assistant MEMCARE,
SuperFund Research Center
CEC

Dr. Claude Bruderlein

Adjunct Lecturer on Global Health

Dr. NyThea Campbell Tolbert

Assistant Director
Morehouse College, Public
Health Sciences Institute

Marissa Chan

Community Engagement Core
Trainee, MEMCARE, SuperFund
Research Center, CEC

Eric Creighton

Program Coordinator Department
of Biological Sciences

Dr. Shirley Green

Associate Dean of Students
Harvard Extension School

Dr. Rosalind Gregory-Bass

Director of the Health Careers
Program and Associate Professor
Environmental and Health Sciences
Program, Spelman College

Dr. Albert Hofman

Chair of the Department of
Epidemiology

Dr. William Hsiao

K.T. Li Professor of Economics,
Emeritus
Department of Health Policy and
Management and Department of
Global Health and Population

Caroline Huntington

Manager of Academic Affairs
Department of Epidemiology

Dr. Monik Carmen Jimenez

Assistant Professor of Medicine

Michelle Kaufman

President/Owner
Blue Monkey Promotions

Alisha Lalani

Senior Vice President Growth
and Strategy
Mae

Manny Lim

Executive Assistant

Dr. Wezi Msisha

Senior Health Specialist
World Bank

Nan Mellem Publishing

Dr. DeKimberlen Neely

Associate Dean
Spelman College

Jeffrey Noyes

Academic Assistant
Department of Epidemiology

Olu Sanya

Success Prep

Priti Thareja

Senior Program Coordinator
Department of Biostatistics

The Office of Financial Aid

Dr. Rahmelle C. Thompson

Executive Director of
The Undergraduate Health
Sciences Academy
Morehouse School of Medicine

Dr. NyThea Campbell Tolbert

Assistant Director
Morehouse College Public
Health Sciences Institute

Dr. Reginald Tucker-Seeley

VP, Health Equity
ZERO Cancer

Pete Viccione

Senior Instructional Technologist

Dr. Michelle A. Williams

Dean of the Faculty

A special acknowledgment to all staff, faculty and administrators at Historically Black Colleges and University's and Hispanic Serving Institutions who work tirelessly to edify emerging scholars and advance the diverse talent pool of subject matter experts worldwide.

Harvard University is located on the traditional and ancestral land of the Massachusett, the original inhabitants of what is now known as Boston and Cambridge. We pay respect to the people of the Massachusett Tribe, past and present, and honor the land itself which remains sacred to the Massachusett People. We extend our deepest gratitude to all Indigenous People for their care and stewardship of this land for generations.

While we are still grappling with its vestiges today and understand this acknowledgment is insufficient to fully address the harm inflicted upon these communities, we are committed to a lifetime of anti-racist and anti-oppressive work.



**HARVARD
T.H. CHAN**

SCHOOL OF PUBLIC HEALTH
Powerful ideas for a healthier world

The Harvard T.H. Chan School of Public Health brings together dedicated experts from many disciplines to educate new generations of global health leaders and produce powerful ideas that improve the lives and health of people everywhere. As a community of leading scientists, educators, and students, we work together to take innovative ideas from the laboratory to people's lives—not only making scientific breakthroughs but also working to change individual behaviors, public policies, and health care practices. Each year, more than 400 faculty members at Harvard Chan School teach 1,000-plus full-time students from around the world and train thousands more through online and executive education courses. Founded in 1913 as the Harvard-MIT School for Health Officers, the School is recognized as America's oldest professional training program in public health.

hsph.harvard.edu